

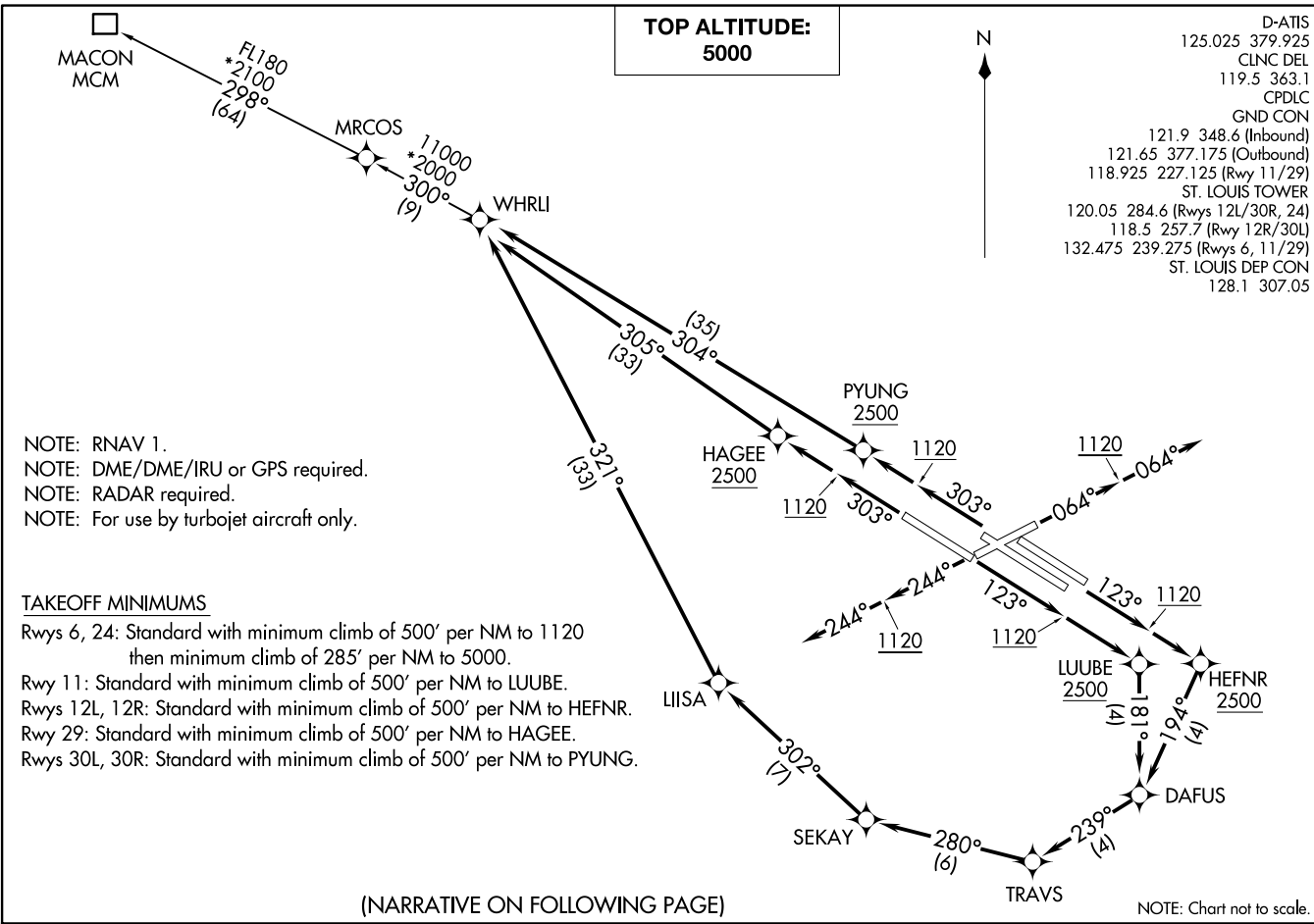
WHRLI SEVEN DEPARTURE (RNAV)  
(WHRLI7, WHRLI) 070CT121

ST LOUIS MISSOURI  
ST LOUIS LAMBERT INTL (STL)

(WHRLI7, WHRLI) 21280  
WHRLI SEVEN DEPARTURE (RNAV)

AL-360 (FAA)

ST LOUIS LAMBERT INTL (STL)  
ST LOUIS MISSOURI





DEPARTURE ROUTE DESCRIPTION

TAKEOFF RUNWAY 6: Climb on heading 064° to 1120, then on heading 064° or as assigned by ATC, expect RADAR vectors to WHRLI. Thence. . . .

TAKEOFF RUNWAY 24: Climb on heading 244° to 1120, then on heading 244° or as assigned by ATC, expect RADAR vectors to WHRLI. Thence. . . .

TAKEOFF RUNWAY 11: Climb on heading 123° to 1120, then direct, to cross LUUBE, at or above 2500, then on depicted route to WHRLI. Thence. . . .

TAKEOFF RUNWAYS 12L/R: Climb on heading 123° to 1120, then direct, to cross HEFNR at or above 2500, then on depicted route to WHRLI. Thence. . . .

TAKEOFF RUNWAY 29: Climb on heading 303° to 1120, then direct, to cross HAGEE at or above 2500, then on depicted route to WHRLI. Thence. . . .

TAKEOFF RUNWAYS 30L/R: Climb on heading 303° to 1120, then direct, to cross PYUNG at or above 2500, then on depicted route to WHRLI. Thence. . . .

. . . . (transition). Maintain 5000, expect filed altitude 10 minutes after departure.

MACON TRANSITION (WHRLI7.MCM)

NC-3, 16 APR 2026 to 14 MAY 2026

NC-3, 16 APR 2026 to 14 MAY 2026