

# ILS or LOC Z RWY 31

MCNARY FLD (SLE)

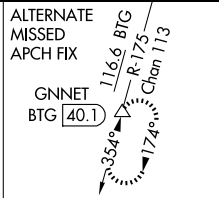
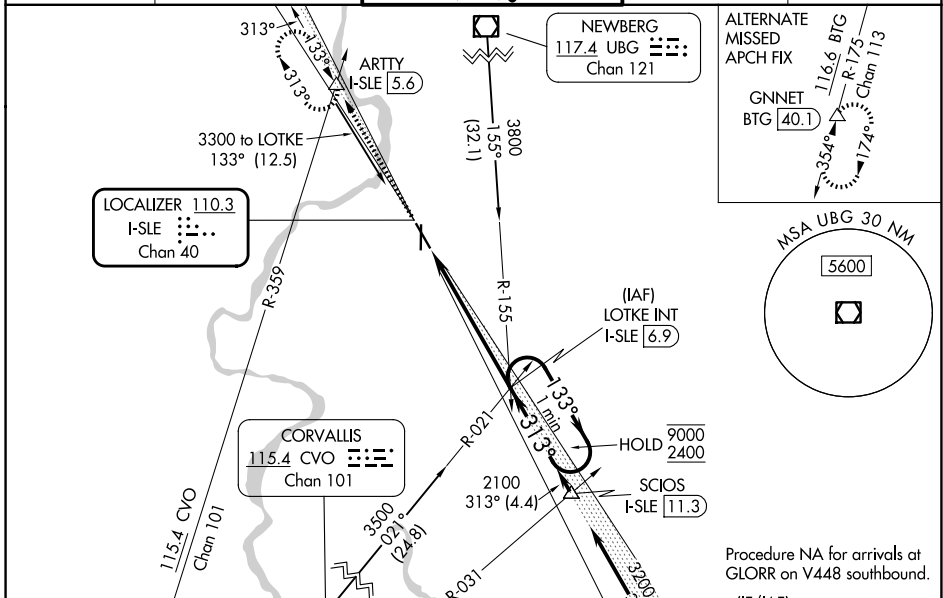
LOC/DME I-SLE <b>110.3</b> Chan 40	APP CRS <b>313°</b>	Rwy Ldg 5811	TDZE 213	Apt Elev 213
--	------------------------	-----------------	-------------	-----------------

RADAR required for procedure entry at ARTTY.

**⚠** Circling Rwy 16, 34 NA at night. For inop ALS, increase S-LOC 31 Cat C/D visibility to 2½ SM.  
**\*RVR 1800** authorized with use of FD or AP or HUD to DA (NA when using Mc Minnville altimeter setting).

**MALSR**  
 MISSED APPROACH: Climb to 4000 on I-SLE localizer NW course (313°) to ARTTY INT/I-SLE 5.6 DME and hold, continue climb-in-hold to 4000.

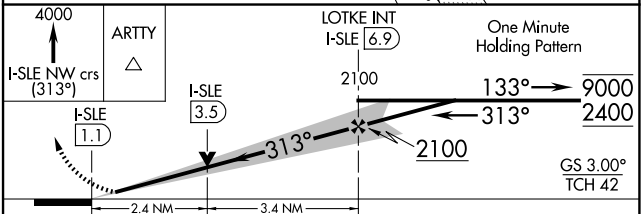
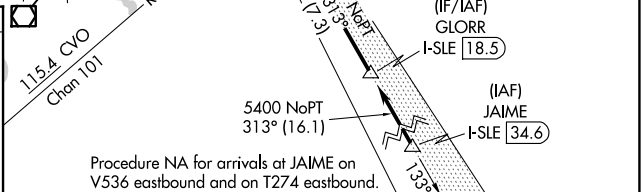
ATIS <b>124.55</b>	SEATTLE CENTER <b>125.8 291.7</b>	SALEM TOWER ★ <b>119.1 (CTAF) 0 257.2</b>	GND CON <b>121.9</b>	UNICOM <b>122.95</b>
-----------------------	--------------------------------------	--	-------------------------	-------------------------



ELEV 213	<b>D</b>	TDZE 213
REIL Rwy 13, 16 and 34		
MIRL Rwy 16-34		
HIRL Rwy 13-31		

FAF to MAP 5.8 NM

Knots	60	90	120	150	180
Min:Sec	5:48	3:52	2:54	2:19	1:56



CATEGORY	A	B	C	D
S-ILS 31*	413/24 200 (200-½)			
S-LOC 31	1020/24 807 (900-½)	1020/40 807 (900-¾)	1020-1⅞ 807 (900-1⅞)	807 (900-1⅞)
CIRCLING	1020-1 807 (900-1)	1020-1¼ 807 (900-1¼)	1060-2½ 847 (900-2½)	1260-3 1047 (1100-3)

NW-1, 16 APR 2026 to 14 MAY 2026

NW-1, 16 APR 2026 to 14 MAY 2026