

APP CRS 305°	Rwy Ldg TDZE Apt Elev	6510 1273 1288
------------------------	-----------------------------	---

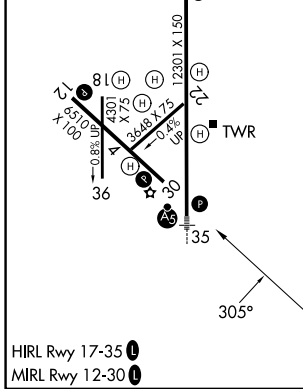
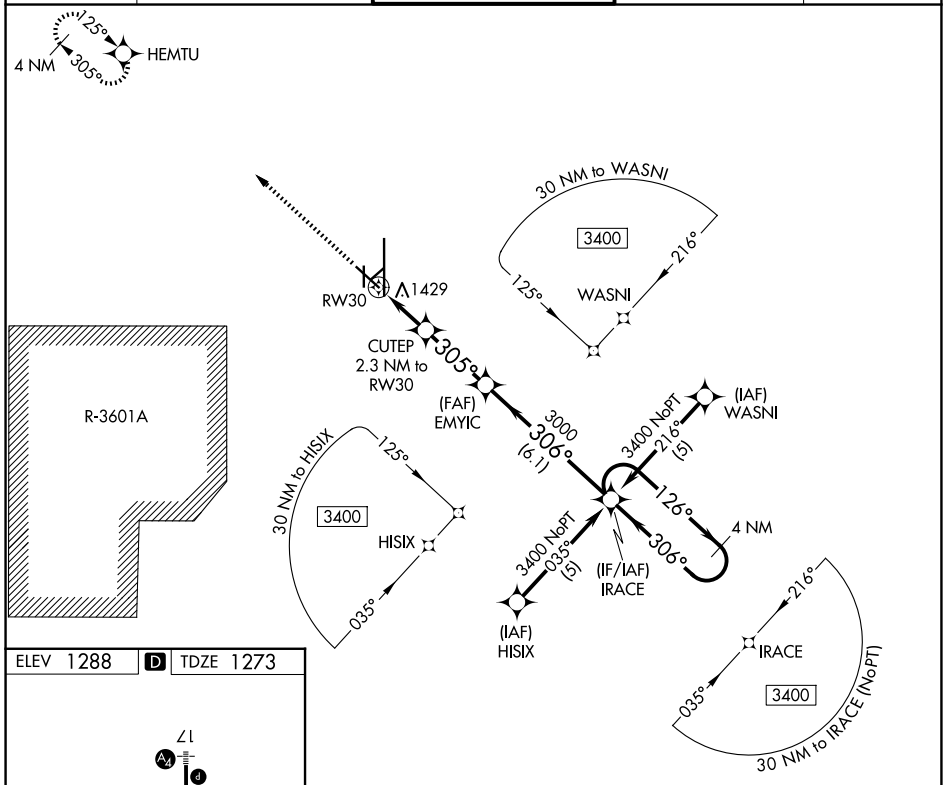
RNAV (GPS) RWY 30

SALINA RGNL (SLN)

⚠ Circling NA for Cat D southwest of runway 12-30.
⚠ DME/DME RNP-0.3 NA.

MISSED APPROACH: Climb to 3400 direct HEMTU and hold.

ATIS 120.15	KANSAS CITY CENTER 134.9 363.2	SALINA TOWER ★ 119.3 (CTAF) 0 257.7	GND CON 121.9 360.8	UNICOM 122.95
-----------------------	--	---	-------------------------------	-------------------------



	3400 HEMTU	IRACE	4 NM Holding Pattern
	CUTEP 2.3 NM to RW30	EMYIC	IRACE
	1.1 NM to RW30	3000	4 NM Holding Pattern
	RW30	306°	126°
	2040	306°	3400
	1.1 NM	1.2 NM	2.9 NM
	6.1 NM		
CATEGORY	A	B	C
LNAV MDA	1680-1	407 (400-1)	1680-1½ 407 (400-1½)
CIRCLING	1820-1 532 (600-1)	1840-1 552 (600-1)	1860-1½ 572 (600-1½)
			1860-2 572 (600-2)

NC-2, 16 APR 2026 to 14 MAY 2026

NC-2, 16 APR 2026 to 14 MAY 2026