

LOC I-SNS	APP CRS	Rwy Ldg	4825
108.5	315°	TDZE	82
		Apt Elev	84

# LOC RWY 31

SALINAS MUNI (SNS)

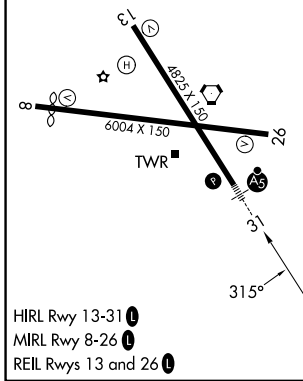
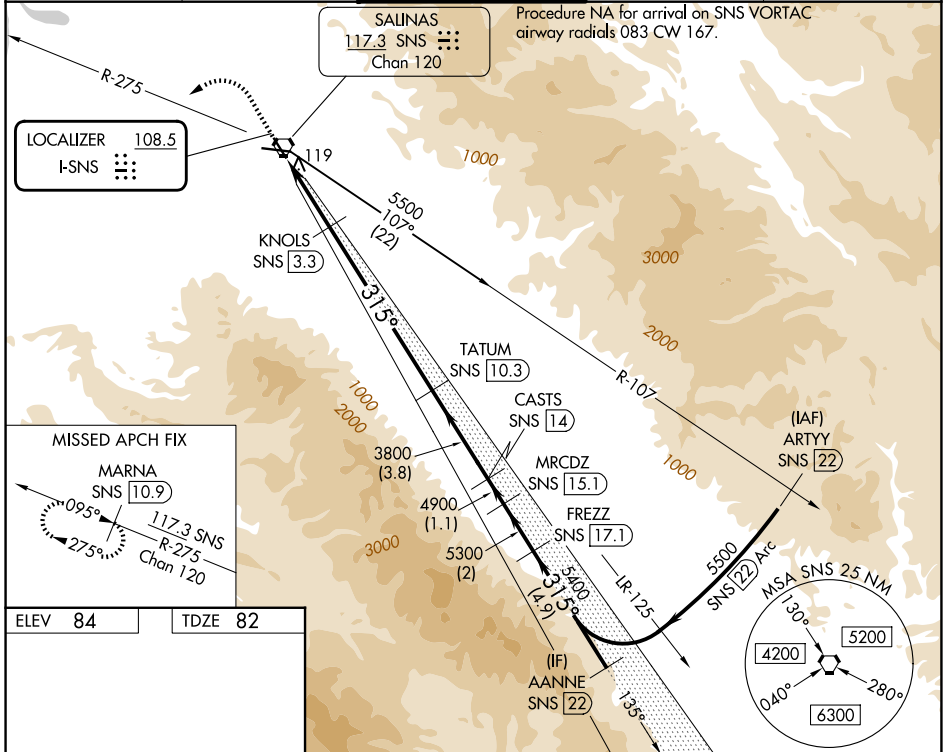
DME required.

⚠ DME from SNS VORTAC. DME use requires simultaneous reception of I-SNS and SNS DME. Circling NA for Cats C and D northeast of Rwy 13 and north of Rwy 26. For inop ALS, increase S-LOC-31 visibility Cats C and D to RVR 5000.

MALS R

MISSED APPROACH: Climb to 800 then climbing left turn to 3000 on SNS VORTAC R-275 to MARNA/SNS 10.9 DME and hold, continue climb-in-hold to 3000.

ATIS	NORCAL APP CON	SALINAS TOWER *	GND CON	UNICOM
124.85	133.0 251.15	119.525 (CTAF) 239.3	121.7	123.0



	800	3000	MARNA SNS 10.9	VGSI and descent angles not coincident (VGSI Angle 3.00/TCH 59).	FREZZ SNS 17.1	AANNE SNS 22
					MRCDZ SNS 15.1	
					CASTS SNS 14	
					TATUM SNS 10.3	
					KNOLS SNS 3.3	
					SNS 1.3	
					SNS 0.4	
CATEGORY	A	B	C	D		
S-LOC 31	420/24	338 (400-½)	420/40	338 (400-¾)		
CIRCLING	540-1	456 (500-1)	800-2	1740-3	716 (800-2)	1656 (1700-3)

SW-2, 16 APR 2026 to 14 MAY 2026

SW-2, 16 APR 2026 to 14 MAY 2026