

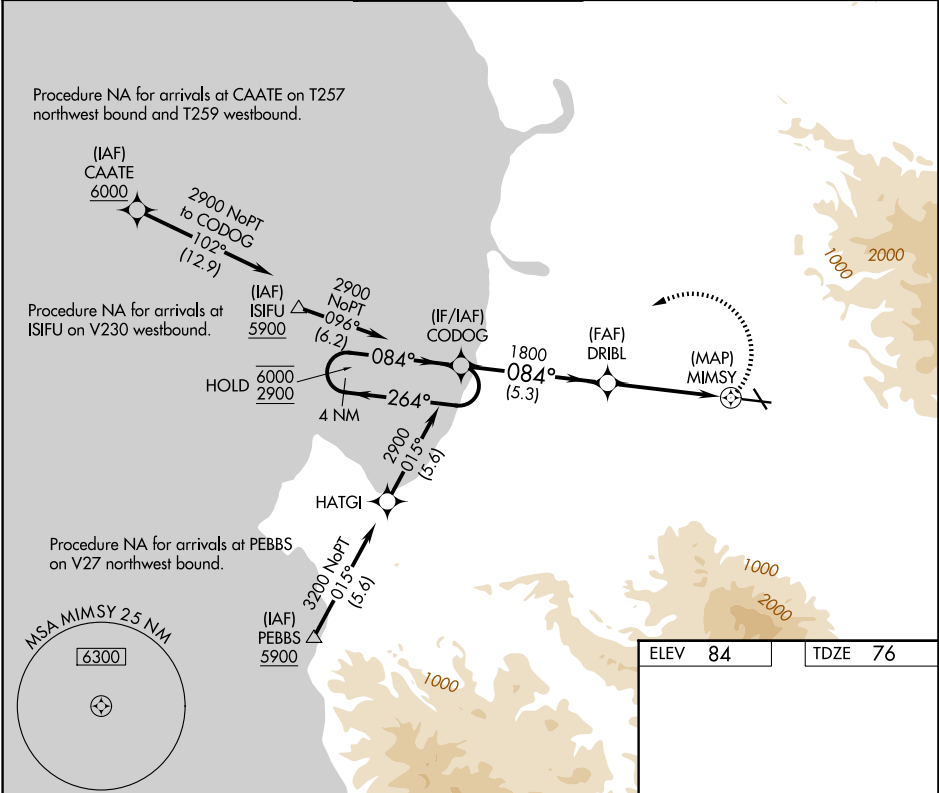
APP CRS	Rwy Ldg	<b>5608</b>
<b>084°</b>	TDZE	<b>76</b>
	Apt Elev	<b>84</b>

# RNAV (GPS) RWY 8

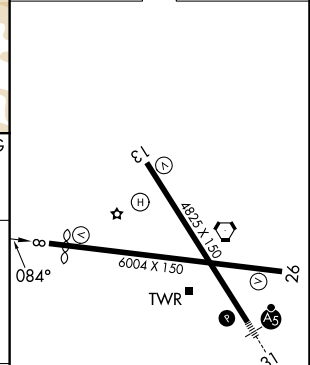
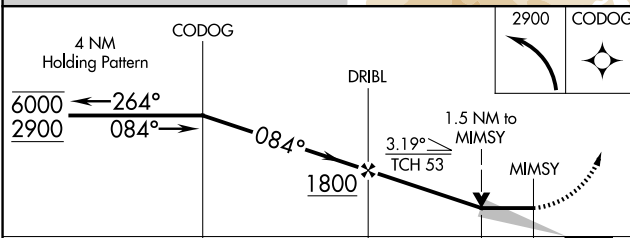
SALINAS MUNI (SNS)

RNP APCH-GPS.	MISSED APPROACH: (Do not exceed 185K until CODOG) Climbing left turn to 2900 direct CODOG and hold, continue climb-in-hold to 2900.
Circling Cat C/D NA northeast of Rwy 13 and north of Rwy 26.	

ATIS <b>124.85</b>	NORCAL APP CON <b>133.0 251.15</b>	SALINAS TOWER * <b>119.525 (CTAF) 239.3</b>	GND CON <b>121.7</b>	UNICOM <b>123.0</b>
-----------------------	---------------------------------------	--	-------------------------	------------------------



ELEV	<b>84</b>	TDZE	<b>76</b>
------	-----------	------	-----------



CATEGORY	A	B	C	D	
LNNAV MDA	760-1	684 (700-1)	760-2	684 (700-2)	
CIRCLING	760-1	676 (700-1)	800-2 716 (800-2)	1680-3 1596 (1600-3)	
					HIRL Rwy 13-31 (L) MIRL Rwy 8-26 (L) REIL Rws 13 and 26 (L)

SW-2, 16 APR 2026 to 14 MAY 2026

SW-2, 16 APR 2026 to 14 MAY 2026