

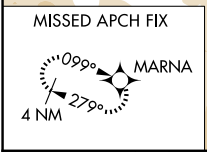
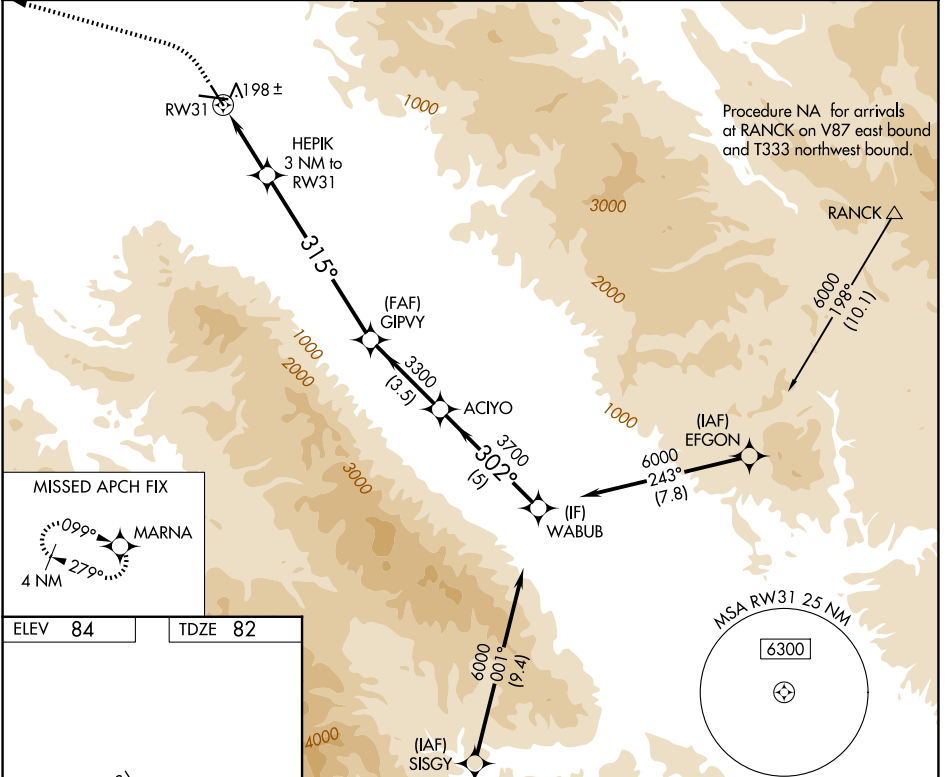
APP CRS	Rwy Ldg	<b>4825</b>
<b>315°</b>	TDZE	<b>82</b>
	Apt Elev	<b>84</b>

# RNAV (GPS) Y RWY 31

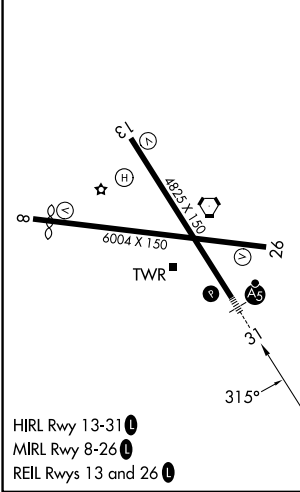
SALINAS MUNI (SNS)

RNP APCH - GPS.		MALSR	MISSED APPROACH: Climb to 600, then climbing left turn to 3000 direct MARNA and hold, continue climb-in-hold to 3000.
<p>⚠ Circling NA for Cat C northeast of Rwy 13 and north of Rwy 26. Circling NA for Cat D northeast of Rwy 13-31.</p>			

ATIS <b>124.85</b>	NORCAL APP CON <b>133.0 251.15</b>	SALINAS TOWER * <b>119.525 (CTAF) 0 239.3</b>	GND CON <b>121.7</b>	UNICOM <b>123.0</b>
-----------------------	---------------------------------------	--	-------------------------	------------------------



ELEV 84	TDZE 82
---------	---------



600	3000	MARNA	VGSI and descent angles not coincident (VGSI Angle 3.00/TCH 59).	WABUB
↑	↷	⬠		
		HEPIK 3 NM to RWY 31	≤ 3.00° TCH 50	ACIYO
		1 NM to RWY 31		GIPVY
		RWY 31		3300
				3700
				6000
				302°
				315°
				1080
				1 NM
				2 NM
				7 NM
				3.5 NM
				5 NM
CATEGORY	A	B	C	D
LNAV MDA	460/24	378 (400-½)	460/35	378 (400-¾)
CIRCLING	540-1	456 (500-1)	800-2 716 (800-2)	1620-3 1536 (1600-3)

SW-2, 16 APR 2026 to 14 MAY 2026

SW-2, 16 APR 2026 to 14 MAY 2026