

(FFU9.FFU) 24025

# FAIRFIELD NINE DEPARTURE

AL-365 (FAA)

SALT LAKE CITY INTL (SLC)  
SALT LAKE CITY, UTAH

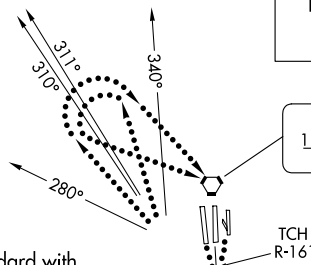
D-ATIS  
124.75 125.625  
CLNC DEL  
127.3 379.975  
CPDLC  
SALT LAKE CITY DEP CON  
128.6 322.3

**TOP ALTITUDE:  
10000**

### TAKEOFF MINIMUMS

Rwys 14, 32, 34L/R, 35: NA- ATC.  
Rwys 16L/R, 17: Assigned heading 160°, standard with minimum climb of 260' per NM to 6000; assigned heading 280° CW 340°, standard with minimum climb of 400' per NM to 8300.

NOTE: DME required.  
NOTE: RADAR required.  
NOTE: This is a RADAR vector departure to assigned route or fix.



WASATCH  
116.8 TCH 115  
Chan 115

FAIRFIELD  
116.6 FFU  
Chan 113

DELTA  
116.1 DTA  
Chan 108

MILFORD  
112.1 MLF  
Chan 58

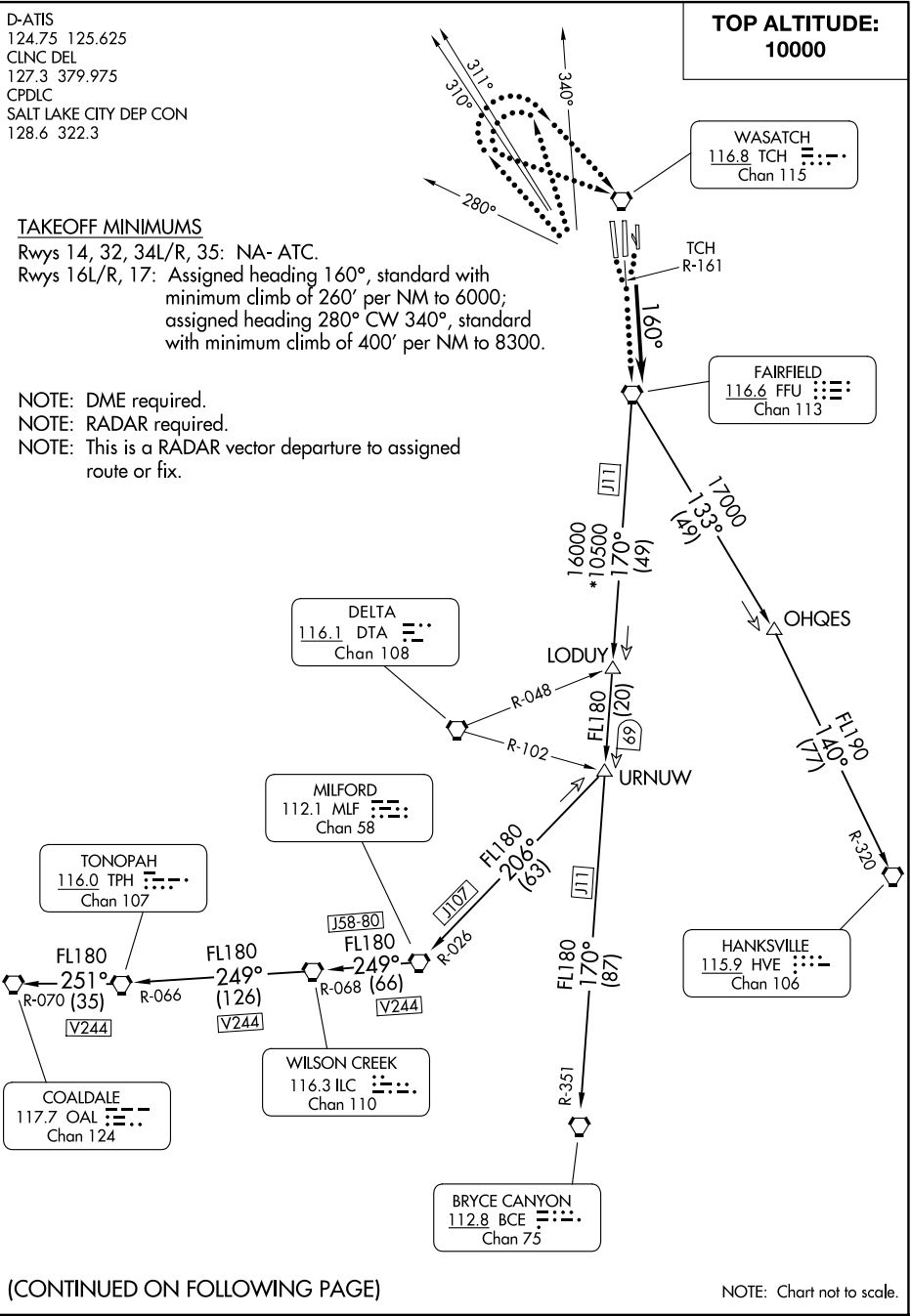
TONOPAH  
116.0 TPH  
Chan 107

HANKSVILLE  
115.9 HVE  
Chan 106

COALDALE  
117.7 OAL  
Chan 124

WILSON CREEK  
116.3 ILC  
Chan 110

BRYCE CANYON  
112.8 BCE  
Chan 75



SW-4, 16 APR 2026 to 14 MAY 2026

SW-4, 16 APR 2026 to 14 MAY 2026

(CONTINUED ON FOLLOWING PAGE)

NOTE: Chart not to scale.

# FAIRFIELD NINE DEPARTURE

(FFU9.FFU) 17AUG17

SALT LAKE CITY, UTAH  
SALT LAKE CITY INTL (SLC)



DEPARTURE ROUTE DESCRIPTION

TAKEOFF RUNWAYS 16L/R, 17: Climb on heading 160° or as assigned, maintain 10000 or assigned lower altitude. Thence . . . .  
. . . . expect RADAR vectors to FFU VORTAC then on filed/assigned transition.  
Expect clearance to filed altitude 10 minutes after departure.

LOST COMMUNICATIONS: If not in contact with departure control 1 minute after takeoff:

RUNWAYS 16L and 17: Assigned heading 160°, turn right, thence . . . .

RUNWAY 16R: Assigned heading 160°, turn left, thence . . . .

. . . . climb to 11000 via TCH R-161 to FFU VORTAC and continue climb via assigned/filed transition.

RUNWAYS 16L/R, 17: Assigned heading 280° CW 340°, fly assigned heading to 11000. Then, aircraft heading 280° CW 310°, execute a climbing right turn, thence . . . .

. . . . aircraft heading 311° CW 340°, execute a climbing left turn, thence . . . .

. . . . direct TCH VORTAC, TCH R-161 to FFU VORTAC, and continue climb via assigned/filed transition.

BRYCE CANYON TRANSITION (FFU9.BCE): From over FFU VORTAC on FFU R-170 to URNUW, then on FFU R-170 and BCE R-351 to BCE VORTAC.

COALDALE TRANSITION (FFU9.OAL): From over FFU VORTAC on FFU R-170 and MLF R-026 to MLF VORTAC, then on MLF R-249 and ILC R-068 to ILC VORTAC, then on ILC R-249 and TPH R-066 to TPH VORTAC, then on TPH R-251 and OAL R-070 to OAL VORTAC.

HANKSVILLE TRANSITION (FFU9.HVE): From over FFU VORTAC on FFU R-133 and HVE R-320 to HVE VORTAC.

MILFORD TRANSITION (FFU9.MLF): From over FFU VORTAC on FFU R-170 and MLF R-026 to MLF VORTAC.

SW-4, 16 APR 2026 to 14 MAY 2026

SW-4, 16 APR 2026 to 14 MAY 2026