

LOC/DME I-MOY 109.5 Chan 32	APP CRS 164°	Rwy Ldg 12002 TDZE 4231 Apt Elev 4231
---	------------------------	--

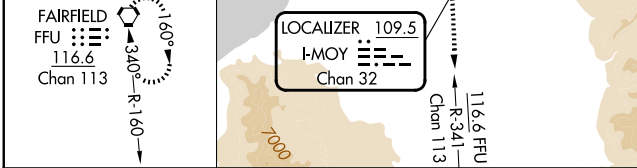
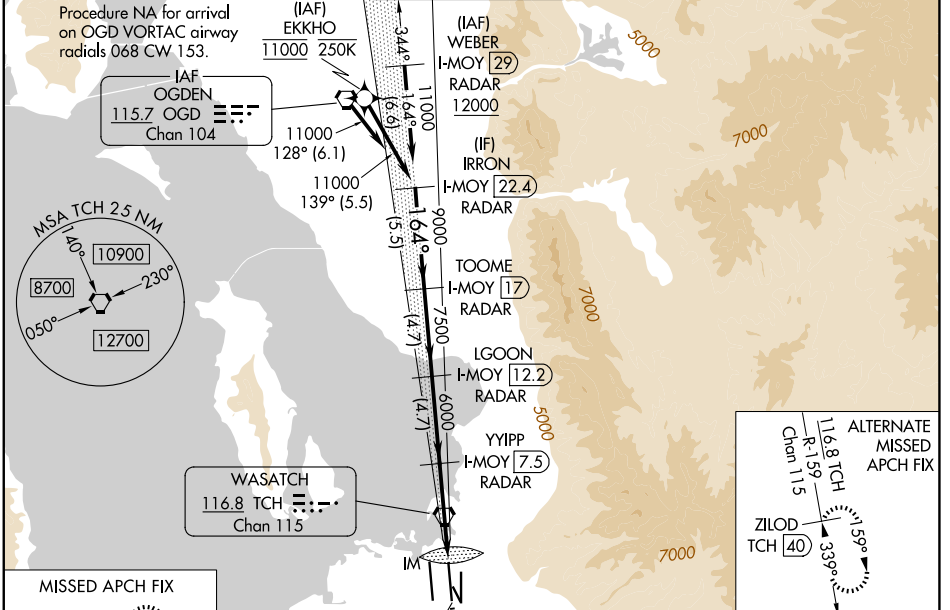
ILS RWY 16L (CAT II & III)

SALT LAKE CITY INTL (SLC)

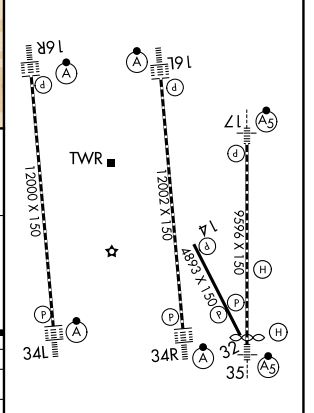
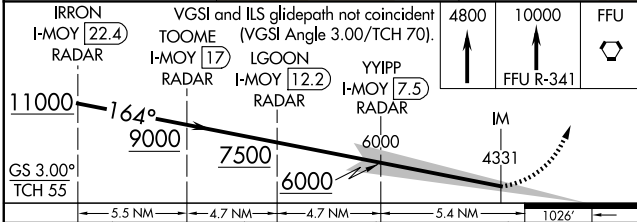
RNP APCH - GPS. From EKKHO.
DME or RADAR required.
Simultaneous approach authorized. CAT II: RVR 1000 authorized with specific OPSPEC, MSPEC, or LOA approval and use of autoland or HUD to touchdown.

ALSIF-2
MISSED APPROACH: Climb to 4800 then climb to 10000 on FFU VORTAC R-341 to FFU VORTAC and hold.

D-ATIS 124.75 125.625	SALT LAKE CITY APP CON 125.7 284.6	SALT LAKE CITY TOWER 119.05 257.8	GND CON 123.775 348.6	CLNC DEL 127.3 379.975	CPDLC
---------------------------------	--	---	---------------------------------	----------------------------------	-------



ELEV 4231	D TDZE 4231
-----------	--------------------



CATEGORY	A	B	C	D
S-ILS 16L	CAT II RA 109/12 100 DA 4331			
S-ILS 16L	CAT III RVR 03			

CATEGORY II & III ILS - SPECIAL AIRCREW & AIRCRAFT CERTIFICATION REQUIRED

HIRL all Rwws
TDZ/CL Rwws 16L, 16R, 17, 34L, 34R and 35

SW-4, 16 APR 2026 to 14 MAY 2026

SW-4, 16 APR 2026 to 14 MAY 2026