

LOC/DME I-UAT 111.9 Chan 56	APP CRS 164°	Rwy Ldg 12000 TDZE 4226 Apt Elev 4231
---	------------------------	---

ILS RWY 16R (CAT II & III)

SALT LAKE CITY INTL (SLC)

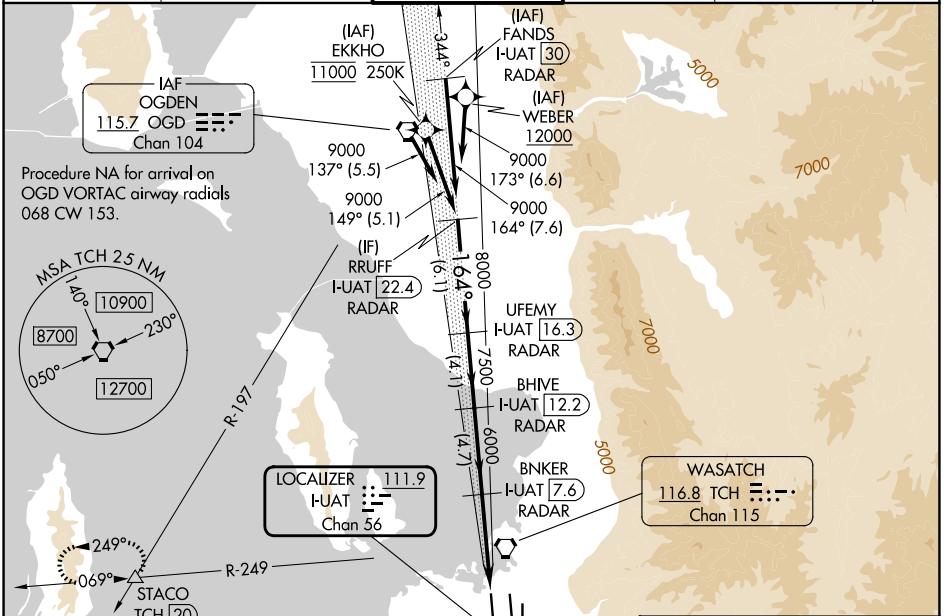
RNP APCH - GPS. From EKKHO or WEBER.
DME or RADAR required.

ALSF-2

MISSED APPROACH: Climb to 4800 then climbing right turn to 8100 on heading 310° and on TCH VORTAC R-249 to STACO INT/TCH 20 DME and hold.

Simultaneous approach authorized. CAT II: RVR 1000 authorized with specific OPSPEC, MSPEC, or LOA approval and use of autoland or HUD to touchdown.

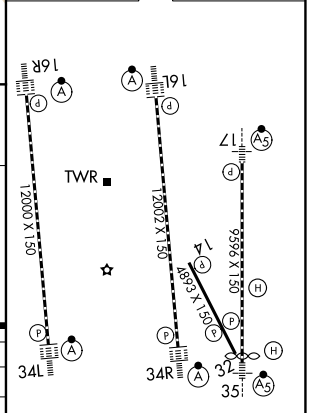
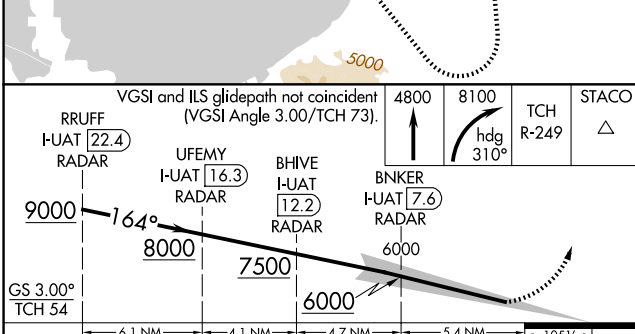
D-ATIS 124.75 125.625	SALT LAKE CITY APP CON 125.7 284.6	SALT LAKE CITY TOWER 132.65 336.4	GND CON 123.775 348.6	CLNC DEL 127.3 379.975	CPDLC
---------------------------------	--	---	---------------------------------	----------------------------------	-------



SW-4, 16 APR 2026 to 14 MAY 2026

SW-4, 16 APR 2026 to 14 MAY 2026

ELEV 4231	D	TDZE 4226
-----------	---	-----------



CATEGORY	A	B	C	D
S-ILS 16R	CAT II RA 104/12 100 DA 4326			
S-ILS 16R	CAT III RVR 03			

HIRL all Rwys
TDZ/CL Rwys 16L, 16R, 17, 34L, 34R, and 35

CATEGORY II & III ILS - SPECIAL AIRCREW & AIRCRAFT CERTIFICATION REQUIRED