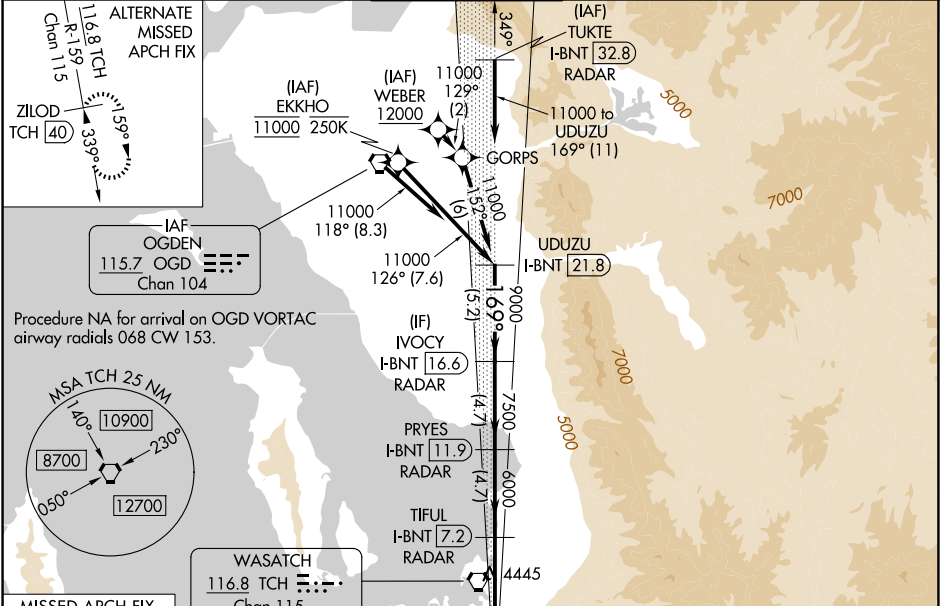


LOC/DME I-BNT 111.5 Chan 52	APP CRS 169°	Rwy Ldg TDZE 4222 Apt Elev 4231
--	------------------------	--

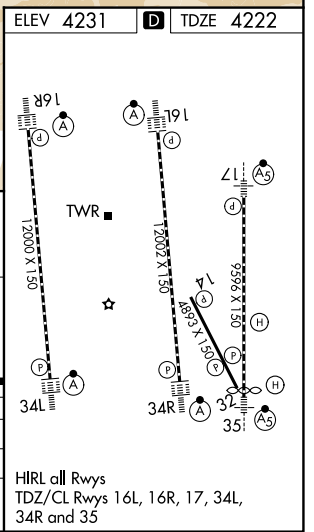
ILS RWY 17 (SA CAT I & II)

SALT LAKE CITY INTL (SLC)

From WEBER, EKKHO: RNAV 1-GPS required.		MALSR 	MISSED APPROACH: Climb to 10000 on FFU R-342 to FFU VORTAC and hold.
DME or RADAR required.			
<p>Simultaneous approach authorized. SA CAT I: Requires specific OPSPEC, MSPEC, or LOA approval and use of HUD to DH. SA CAT II: Reduced lighting: Requires specific OPSPEC, MSPEC, or LOA approval and use of autoland or HUD to touchdown.</p>			
D-ATIS 124.75 125.625	SALT LAKE CITY APP CON 125.7 284.6	SALT LAKE CITY TOWER 118.3 257.8	GND CON 121.9 348.6
			CLNC DEL 127.3 379.975
CPDLC			



UDUZU I-BNT 21.8	IVOCY I-BNT 16.6 RADAR	PRYES I-BNT 11.9 RADAR	TIFUL I-BNT 7.2 RADAR	10000 FFU FFU R-342
11000	9000	7500	6000	
GS 3.00° TCH 55	5.2 NM	4.7 NM	4.7 NM	5.4 NM
CATEGORY	A	B	C	D
S-ILS 17	SA CAT I RA 150/14 150 DA 4372			
S-ILS 17	SA CAT II RA 100/12 100 DA 4322			
SA CATEGORY I & II ILS - SPECIAL AIRCREW & AIRCRAFT CERTIFICATION REQUIRED				



SW-4, 16 APR 2026 to 14 MAY 2026

SW-4, 16 APR 2026 to 14 MAY 2026