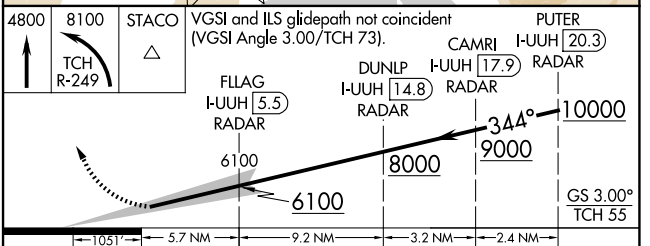
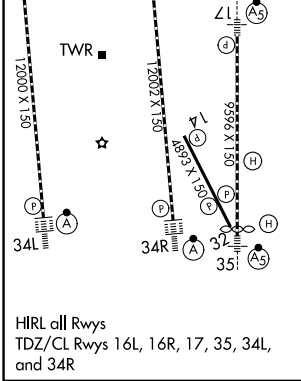
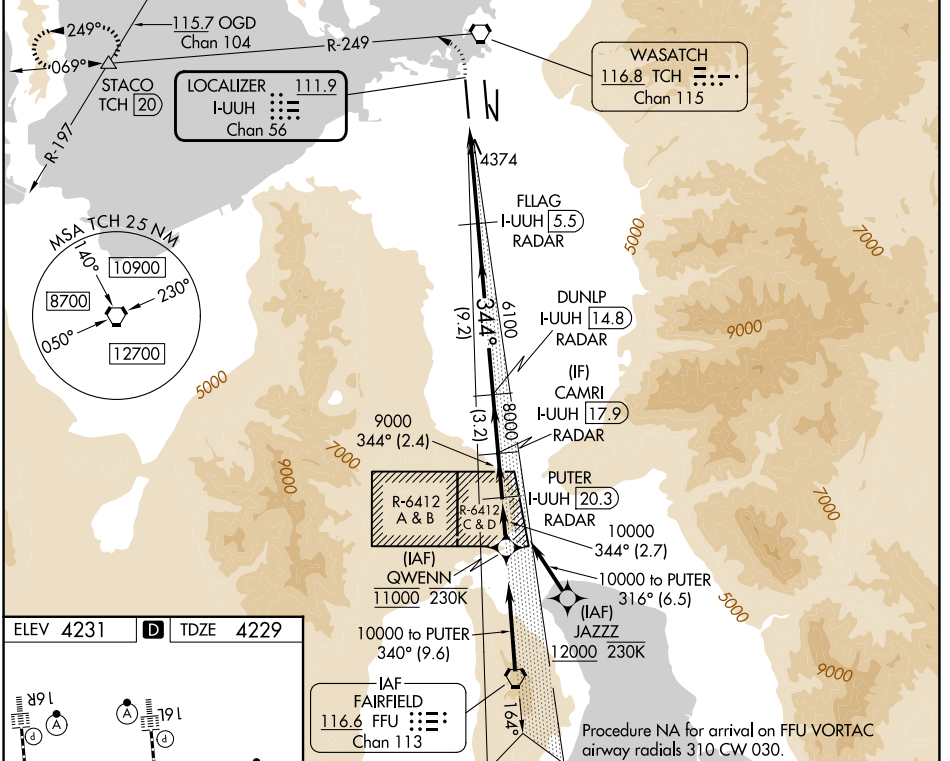


LOC/DME I-UUJH <b>111.9</b> Chan 56	APP CRS <b>344°</b>	Rwy Ldg TDZE <b>12000</b> <b>4229</b>	Apt Elev <b>4231</b>
---	------------------------	---	-------------------------

# ILS RWY 34L (SA CAT I)

SALT LAKE CITY INTL (SLC)

RNP APCH - GPS. From QWENN or JAZZZ. DME or RADAR required.		ALSIF-2 	MISSED APPROACH: Climb to 4800 then climbing left turn to 8100 on TCH VORTAC R-249 to STACO INT/TCH 20 DME and hold.		
Simultaneous approach authorized. Requires specific OPSPEC, MSPEC, or LOA approval.					
D-ATIS <b>124.75 125.625</b>	SALT LAKE CITY APP CON <b>125.7 284.6</b>	SALT LAKE CITY TOWER <b>132.65 336.4</b>	GND CON <b>123.775 348.6</b>	CLNC DEL <b>127.3 379.975</b>	CPDLC



CATEGORY	A	B	C	D
S-ILS 34L	RA 157/14 150 DA 4379			
<b>SA CATEGORY I ILS - SPECIAL AIRCREW &amp; AIRCRAFT CERTIFICATION REQUIRED</b>				

SW-4, 16 APR 2026 to 14 MAY 2026

SW-4, 16 APR 2026 to 14 MAY 2026