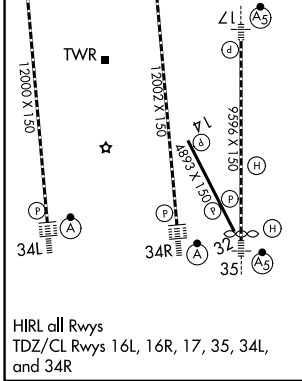
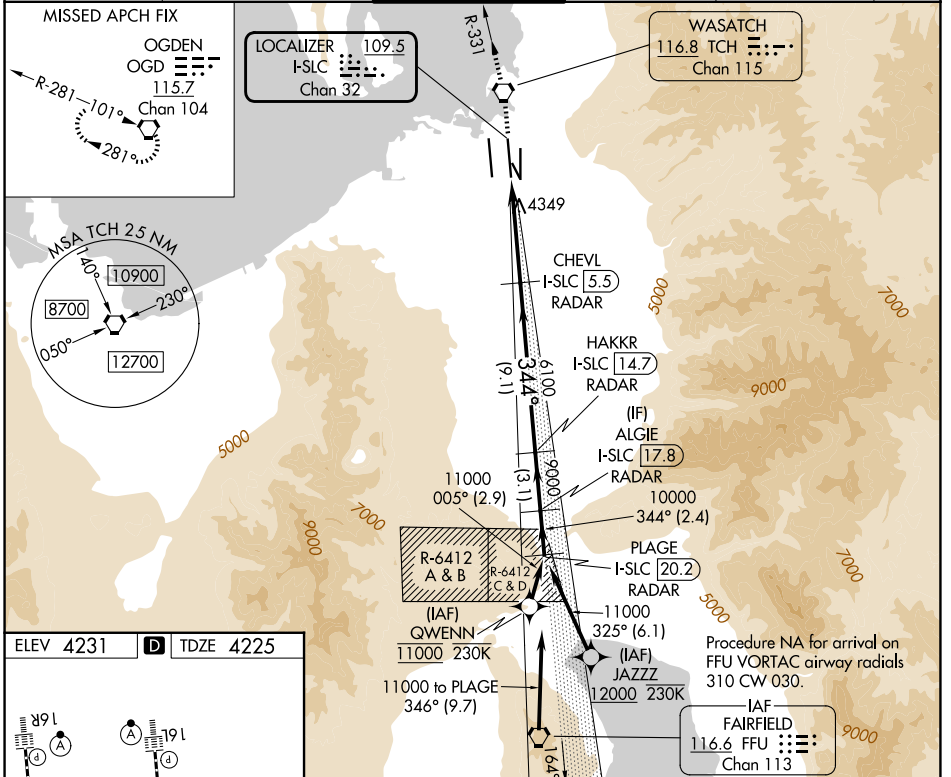


LOC/DME I-SLC 109.5 Chan 32	APP CRS 344°	Rwy Ldg 12002 TDZE 4225 Apt Elev 4231
---	------------------------	--

ILS RWY 34R (CAT II & III)

SALT LAKE CITY INTL (SLC)

RNP APCH - GPS. From QWENN or JAZZZ.		ALSF-2 	MISSED APPROACH: Climb to 9000 direct TCH VORTAC and on TCH VORTAC R-331 to OGD VORTAC and hold.	
D-ATIS 124.75 25.625			GND CON 123.775 348.6	CLNC DEL 127.3 379.975
SALT LAKE CITY APP CON 125.7 284.6		SALT LAKE CITY TOWER 119.05 257.8		



9000 TCH	TCH R-331	OGD	VGSI and ILS glidepath not coincident (VGSI Angle 3.00/TCH 73).	PLAGE I-SLC 20.2 RADAR
↑			CHEVL I-SLC 5.5 RADAR	HAKKR I-SLC 17.8 RADAR
			6100	9000 10000
			344°	11000
			6100	9000 10000
			1045°	GS 3.00° TCH 55
			5.7 NM	9.1 NM 3.1 NM 2.4 NM

CATEGORY	A	B	C	D
S-ILS 34R	CAT II RA 99/12 100 DA 4325			
S-ILS 34R	CAT III RVR 03			
CATEGORY II & III ILS - SPECIAL AIRCREW & AIRCRAFT CERTIFICATION REQUIRED				

SW-4, 16 APR 2026 to 14 MAY 2026

SW-4, 16 APR 2026 to 14 MAY 2026