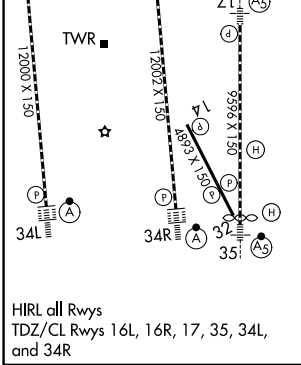
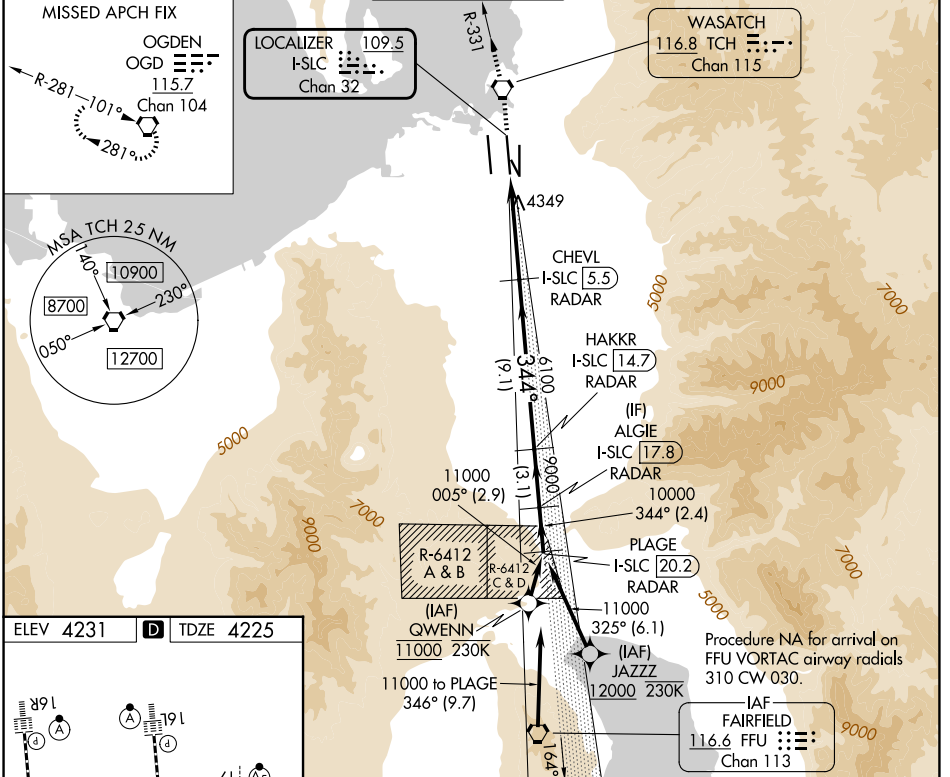


LOC/DME I-SLC 109.5 Chan 32	APP CRS 344°	Rwy Ldg TDZE 4225 Apt Elev 4231
---	------------------------	---

ILS RWY 34R (SA CAT I)

SALT LAKE CITY INTL (SLC)

RNP APCH - GPS. From QWENN or JAZZZ.		ALSF-2		MISSED APPROACH: Climb to 9000 direct TCH VORTAC and on TCH VORTAC R-331 to OGD VORTAC and hold.	
D-ATIS 124.75 125.625		SALT LAKE CITY APP CON 125.7 284.6		SALT LAKE CITY TOWER 119.05 257.8	
GND CON 123.775 348.6		CLNC DEL 127.3 379.975		CPDLC	



9000 TCH	OGD	VGSI and ILS glidepath not coincident (VGSI Angle 3.00/TCH 73).	PLAGE I-SLC [20.2] RADAR
TCH R-331		CHEVL I-SLC [5.5] RADAR	HAKKR I-SLC [14.7] RADAR
			ALGIE I-SLC [17.8] RADAR
		6100	9000
			10000
			GS 3.00° TCH 55
		1045°	5.7 NM
			9.1 NM
			3.1 NM
			2.4 NM

CATEGORY	A	B	C	D
S-ILS 34R	RA 149/14 150 DA 4375			
SA CATEGORY I ILS - SPECIAL AIRCREW & AIRCRAFT CERTIFICATION REQUIRED				

SW-4, 16 APR 2026 to 14 MAY 2026

SW-4, 16 APR 2026 to 14 MAY 2026