

LOC/DME I-MOY <b>109.5</b> Chan <b>32</b>	APP CRS <b>164°</b>	Rwy Ldg <b>12002</b> TDZE <b>4231</b> Apt Elev <b>4231</b>
---	------------------------	--

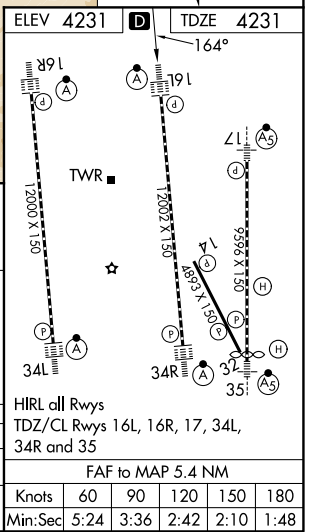
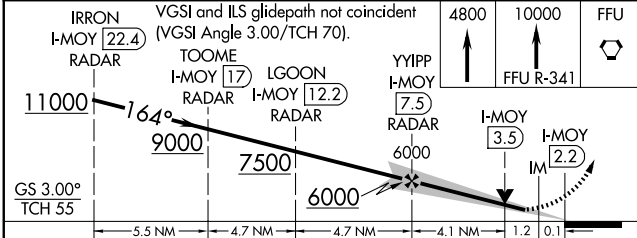
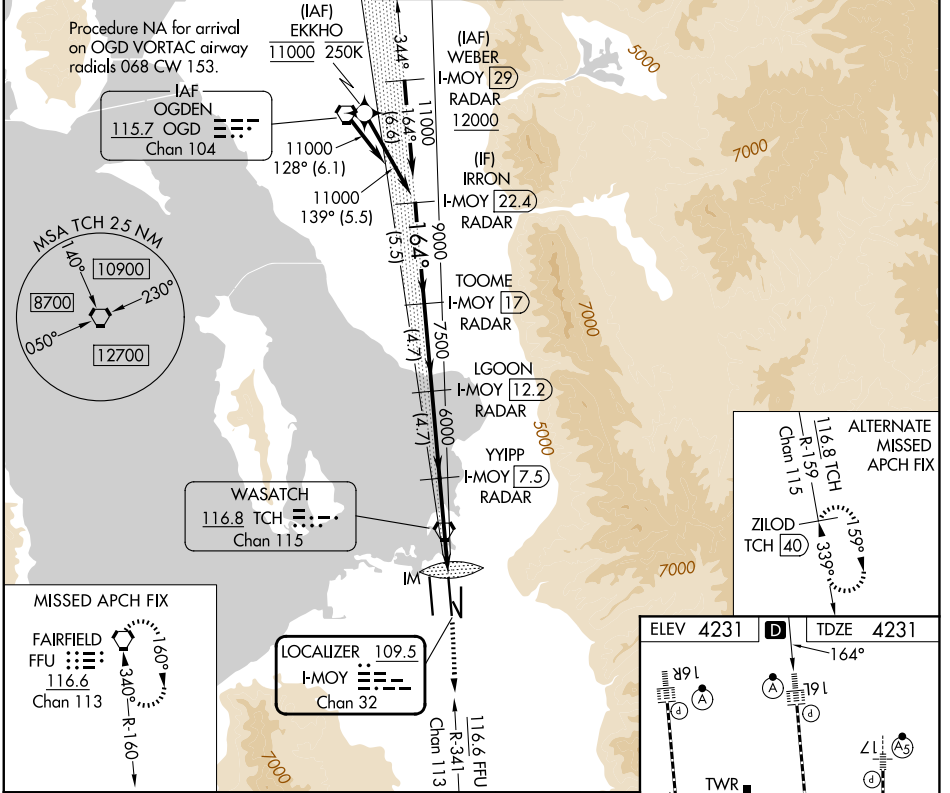
# ILS or LOC RWY 16L

SALT LAKE CITY INTL (SLC)

RNP APCH - GPS. From EKKHO.  
DME or RADAR required.  
Simultaneous approach authorized. For inop ALS, increase S-LOC 16L Cat C/D visibility to 1 3/8 SM.

ALSF-2  
MISSED APPROACH: Climb to 4800 then climb to 10000 on FFU VORTAC R-341 to FFU VORTAC and hold.

D-ATIS <b>124.75 125.625</b>	SALT LAKE CITY APP CON <b>125.7 284.6</b>	SALT LAKE CITY TOWER <b>119.05 257.8</b>	GND CON <b>123.775 348.6</b>	CLNC DEL <b>127.3 379.975</b>	CPDLC
---------------------------------	--	---	---------------------------------	----------------------------------	-------



CATEGORY	A	B	C	D
S-ILS 16L		4431/18	200 (200-1/2)	
S-LOC 16L	4720/24	489 (500-1/2)	4720/50	489 (500-1)

SW-4, 16 APR 2026 to 14 MAY 2026

SW-4, 16 APR 2026 to 14 MAY 2026