

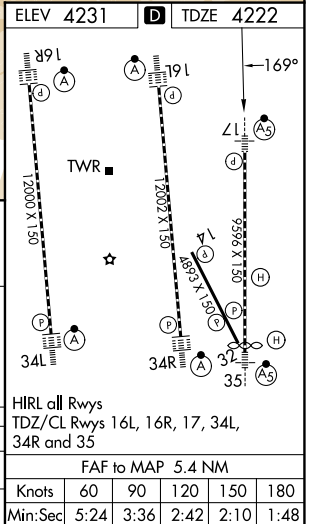
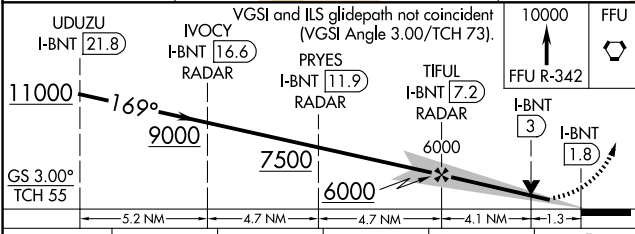
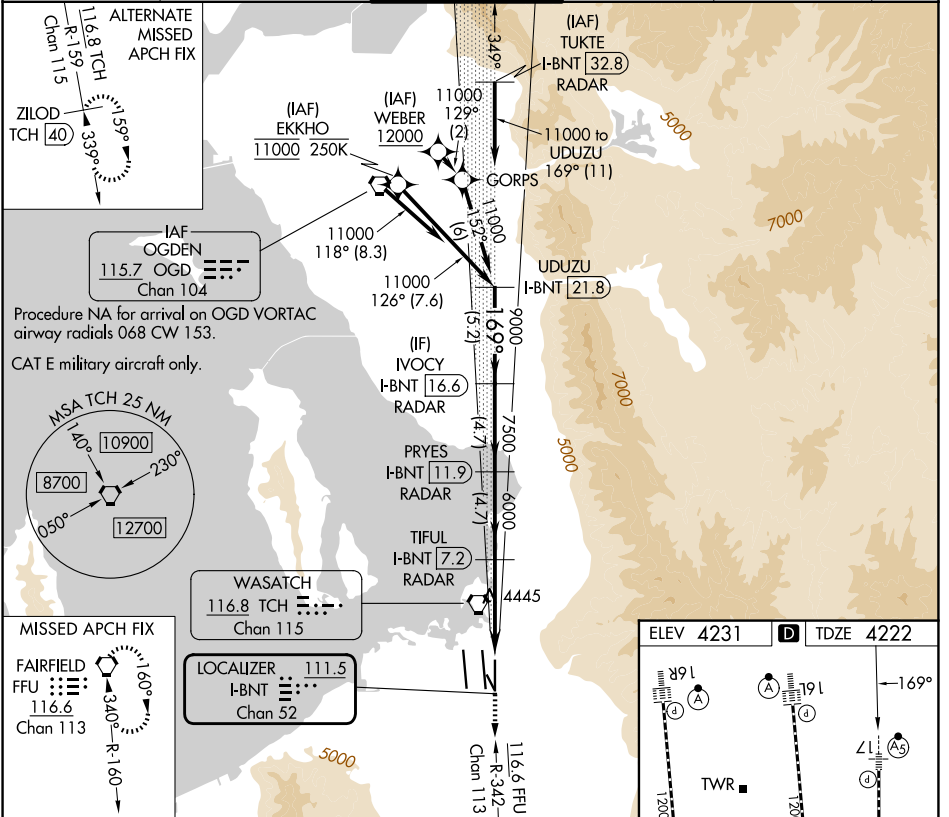
LOC/DME I-BNT <b>111.5</b> Chan <b>52</b>	APP CRS <b>169°</b>	Rwy Ldg TDZE <b>4222</b> Apt Elev <b>4231</b>
---	------------------------	--

# ILS or LOC RWY 17

SALT LAKE CITY INTL (SLC)

From WEBER, EKKHO: RNAV 1-GPS required.		MALSR 	MISSED APPROACH: Climb to 10000 on FFU R-342 to FFU VORTAC and hold.
DME or RADAR required.			
<p>Simultaneous approach authorized. For inop ALS, increase S-ILS 17 Cat E visibility to RVR 4000, increase S-LOC 17 Cat C/D/E visibility to 1 3/8 SM.</p>			

D-ATIS <b>124.75 125.625</b>	SALT LAKE CITY APP CON <b>125.7 284.6</b>	SALT LAKE CITY TOWER <b>118.3 257.8</b>	GND CON <b>121.9 348.6</b>	CLNC DEL <b>127.3 379.975</b>	CPDLC
---------------------------------	--	--	-------------------------------	----------------------------------	-------



SW-4, 16 APR 2026 to 14 MAY 2026

SW-4, 16 APR 2026 to 14 MAY 2026