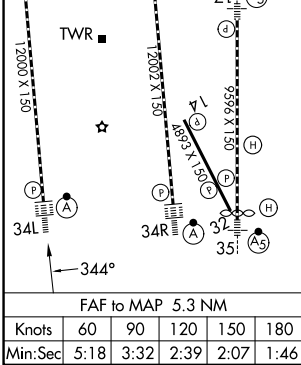
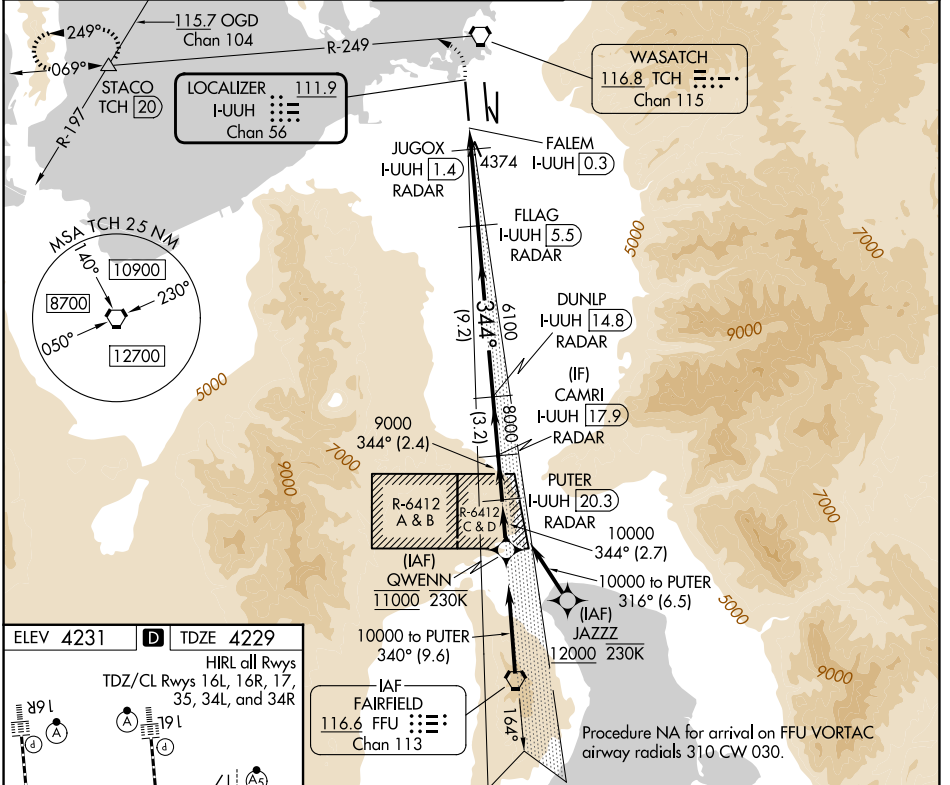


LOC/DME I-UUH <b>111.9</b> Chan 56	APP CRS <b>344°</b>	Rwy Ldg TDZE <b>12000</b> <b>4229</b>	Apt Elev <b>4231</b>
--	------------------------	---	-------------------------

# ILS or LOC RWY 34L

SALT LAKE CITY INTL (SLC)

RNP APCH - GPS. From QWENN or JAZZZ.		ALSIF-2 	MISSED APPROACH: Climb to 8100 then climbing left turn to 8100 on TCH VORTAC R-249 to STACO INT/TCH 20 DME and hold.		
DME or RADAR required.					
<p>Simultaneous approach authorized. For inop ALS, increase S-LOC 34L Cat C/D visibility to RVR 6000.</p>					
D-ATIS <b>124.75 125.625</b>	SALT LAKE CITY APP CON <b>125.7 284.6</b>	SALT LAKE CITY TOWER <b>132.65 336.4</b>	GND CON <b>123.775 348.6</b>	CLNC DEL <b>127.3 379.975</b>	CPDLC



4800	8100	STACO	VGSI and ILS glidepath not coincident (VGSI Angle 3.00/TCH 73).	PUTER
TCH R-249				CAMRI I-UUH [20.3] RADAR
				DUNLP I-UUH [14.8] RADAR
				FLAG I-UUH [5.5] RADAR
				JUGOX I-UUH [1.4] RADAR
				FALEM I-UUH [0.9] RADAR
				FALEM I-UUH [0.3] RADAR
				6100
				8000
				9000
				10000
				GS 3.00° TCH 55
CATEGORY	A	B	C	D
S-ILS 34L	4429/18		200 (200-½)	
S-LOC 34L	4640/24 411 (500-½)		4640/40 411 (500-¾)	

SW-4, 16 APR 2026 to 14 MAY 2026

SW-4, 16 APR 2026 to 14 MAY 2026