

JAMMN FIVE ARRIVAL

AL-365 (FAA)

SALT LAKE CITY APP CON
128.1 307.05

OGDEN
115.7 OGD
Chan 104

WASATCH
116.8 TCH
Chan 115

FAIRFIELD
116.6 FFU
Chan 113

DELTA
116.1 DTA
Chan 108

MILFORD
112.1 MLF
Chan 58

BRYCE CANYON
112.8 BCE
Chan 75

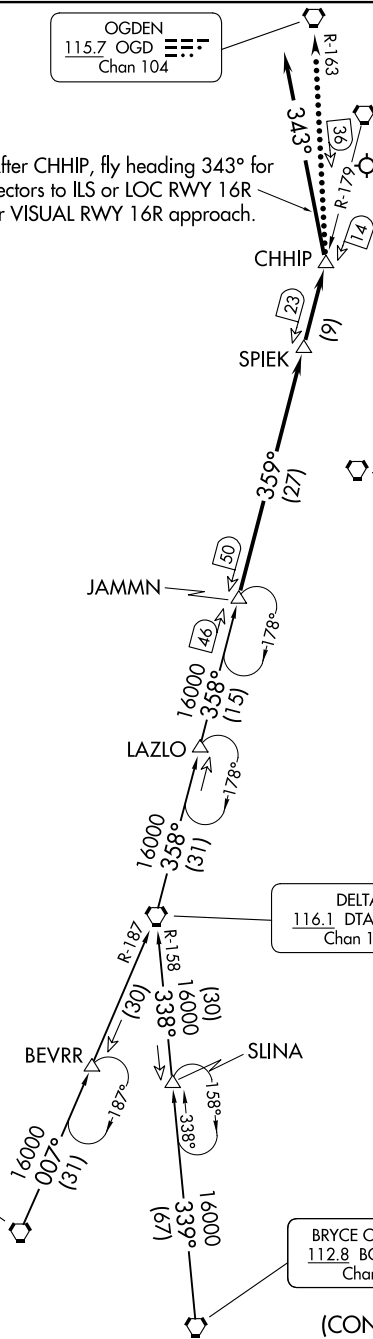
NOTE: After CHHIP, fly heading 343° for vectors to ILS or LOC RWY 16R or VISUAL RWY 16R approach.

NOTE: RADAR required.
NOTE: DME required.
NOTE: Chart not to scale.

(CONTINUED ON FOLLOWING PAGE)

SW-4, 16 APR 2026 to 14 MAY 2026

SW-4, 16 APR 2026 to 14 MAY 2026



ARRIVAL ROUTE DESCRIPTION

BRYCE CANYON TRANSITION (BCE.JAMMN5): From over BCE VORTAC via BCE R-339 and DTA R-158 to DTA VORTAC. Then via DTA R-358 to JAMMN. Thence. . . .

MILFORD TRANSITION (MLF.JAMMN5): From over MLF VORTAC via MLF R-007 and DTA R-187 to DTA VORTAC. Then via DTA R-358 to JAMMN. Thence. . . .

. . . .From JAMMN on TCH VORTAC R-179 to CHHIP, then fly heading 343° for vectors to ILS or LOC RWY 16R or VISUAL Rwy 16R approach.

LOST COMMUNICATIONS

In the event of lost communications, at CHHIP proceed direct OGD VORTAC. Maintain 11000 until OGD VORTAC.

SW-4, 16 APR 2026 to 14 MAY 2026

SW-4, 16 APR 2026 to 14 MAY 2026