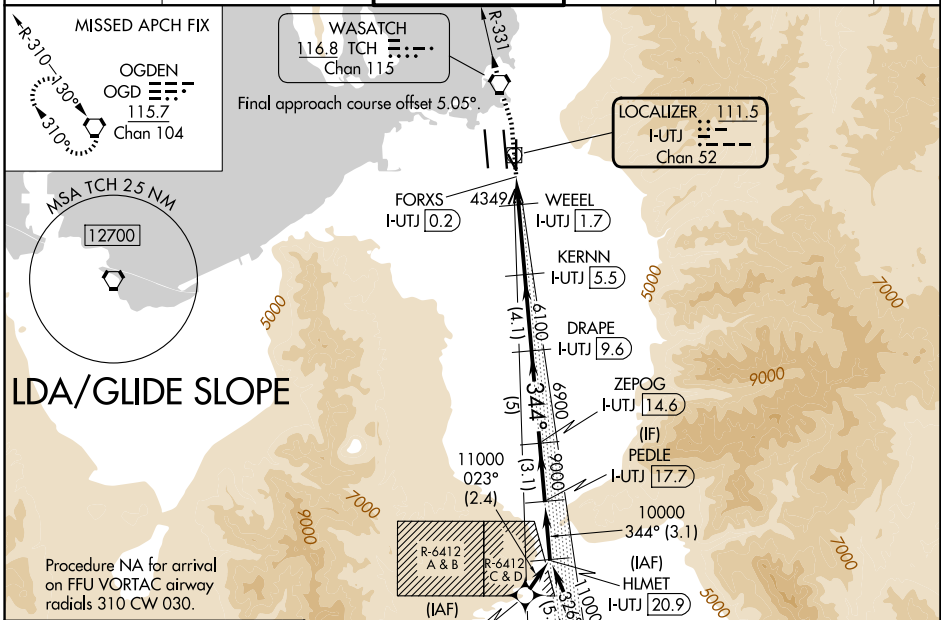


LOC/DME I-UTJ <b>111.5</b> Chan <b>52</b>	APP CRS <b>344°</b>	Rwy Ldg <b>9272</b> TDZE <b>4227</b> Apt Elev <b>4231</b>
---	------------------------	---

**LDA RWY 35**  
SALT LAKE CITY INTL (SLC)

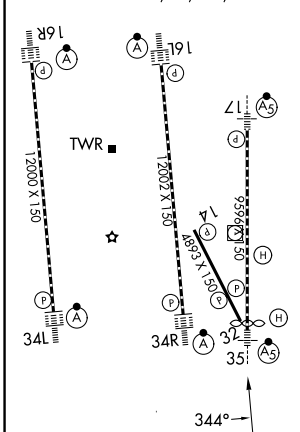
RNP APCH - GPS. From QWENN or JAZZZ. DME required.	MALSR	MISSED APPROACH: Climb to 4800 then climbing left turn to 9000 direct TCH VORTAC and on TCH VORTAC R-331 to OGD VORTAC and hold.
Simultaneous approach authorized. For inop ALS, increase S-LDA/GS 35 all Cats visibility to RVR 4000, increase S-LDA 35 Cat E visibility to 1 1/4 SM. Cat E restricted to USAF/USN aircraft.		

D-ATIS <b>124.75 125.625</b>	SALT LAKE CITY APP CON <b>125.7 284.6</b>	SALT LAKE CITY TOWER <b>118.3 257.8</b>	GND CON <b>121.9 348.6</b>	CLNC DEL <b>127.3 379.975</b>	CPDLC
---------------------------------	--	--	-------------------------------	----------------------------------	-------



ELEV 4231	<b>D</b>	TDZE 4227
-----------	----------	-----------

HIRL all Rwys  
TDZ/CL Rwys 16L, 16R, 17, 35, 34L, and 34R



4800	9000	TCH	TCH R-331	OGD	VGSi and LDA glidepath not coincident (VGSi Angle 3.00/TCH 74).	PEDLE I-UTJ 17.7
I-UTJ DME ANTENNA	WEEL I-UTJ 1.7	FORXS I-UTJ 0.2	KERNN I-UTJ 5.5	DRAPE I-UTJ 9.6	ZEPOG I-UTJ 14.6	10000
0.4	0.7	0.8	-3.8 NM	-4.1 NM	-5 NM	-3.1 NM

CATEGORY	A	B	C	D	E
S-LDA/GS 35	4477/24		250 (300-1/2)		
S-LDA 35	4660/24	433 (500-1/2)	4660/40	433 (500-3/4)	