

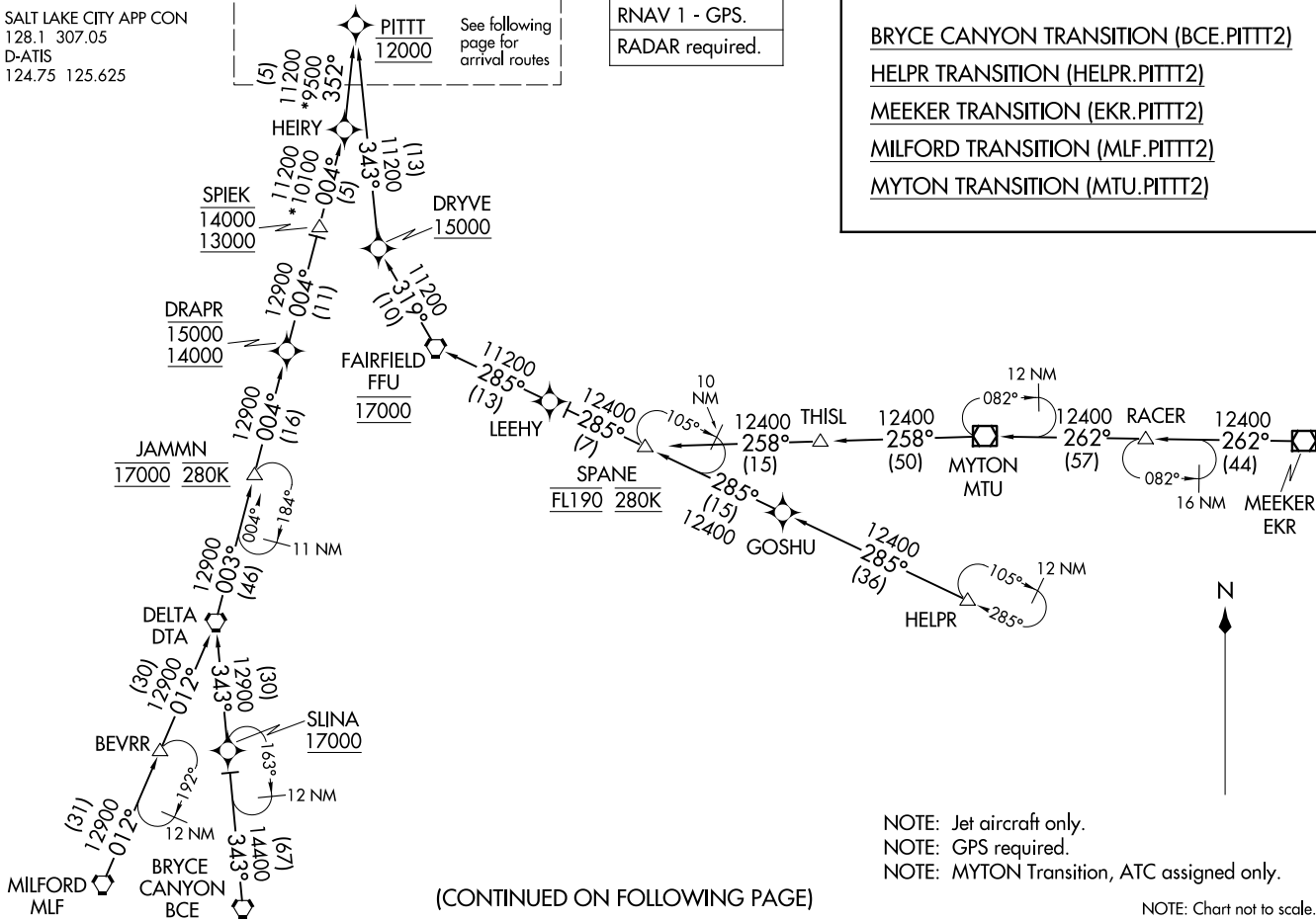
PITTT TWO ARRIVAL (RNAV) Transition Routes
(PITTT.PITTT2) 19MAR26
SALT LAKE CITY, UTAH
SALT LAKE CITY INTL (SLC)

SALT LAKE CITY APP CON
128.1 307.05
D-ATIS
124.75 125.625

PITTT 12000
See following page for arrival routes

RNAV 1 - GPS.
RADAR required.

BRYCE CANYON TRANSITION (BCE.PITTT2)
HELPR TRANSITION (HELPR.PITTT2)
MEEKER TRANSITION (EKR.PITTT2)
MILFORD TRANSITION (MLF.PITTT2)
MYTON TRANSITION (MTU.PITTT2)



(CONTINUED ON FOLLOWING PAGE)

NOTE: Jet aircraft only.
NOTE: GPS required.
NOTE: MYTON Transition, ATC assigned only.

NOTE: Chart not to scale.

(PITTT.PITTT2) 26078
PITTT TWO ARRIVAL (RNAV) Transition Routes
AL-365 (FAA)
SALT LAKE CITY INTL (SLC)
SALT LAKE CITY, UTAH

(PITTT.PITTT2) 26078

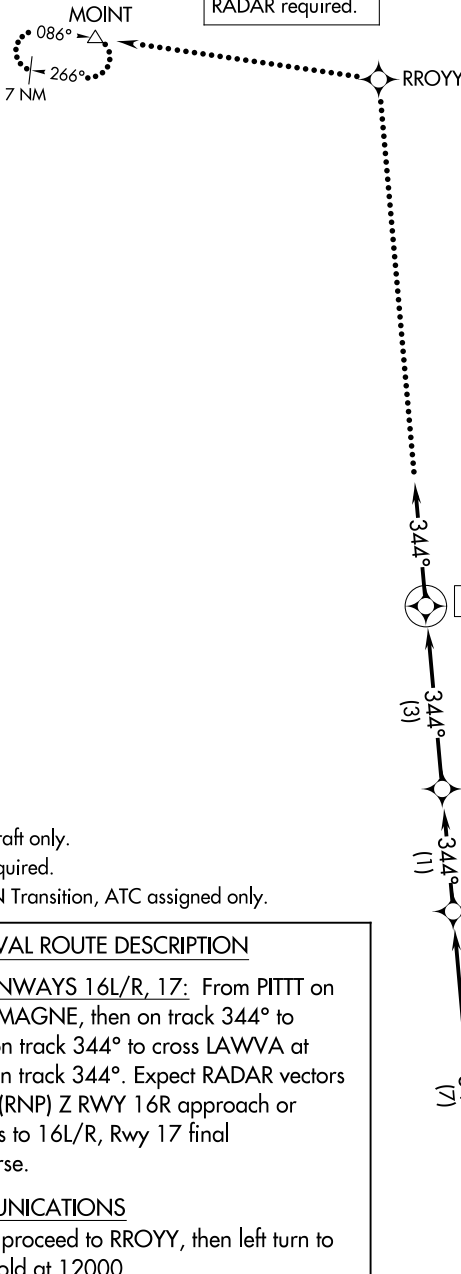
PITTT TWO ARRIVAL (RNAV) Arrival Routes

AL-365 (FAA)

SALT LAKE CITY INTL (SLC)
SALT LAKE CITY, UTAH

RNAV 1 - GPS.
RADAR required.

SALT LAKE CITY APP CON
128.1 307.05
D-ATIS
124.75 125.625



- NOTE: Jet aircraft only.
- NOTE: GPS required.
- NOTE: MYTON Transition, ATC assigned only.

ARRIVAL ROUTE DESCRIPTION

LANDING RUNWAYS 16L/R, 17: From PITTT on track 344° to MAGNE, then on track 344° to QUIPA, then on track 344° to cross LAWVA at 11000, then on track 344°. Expect RADAR vectors for the RNAV (RNP) Z RWY 16R approach or RADAR vectors to 16L/R, Rwy 17 final approach course.

LOST COMMUNICATIONS

After LAWVA proceed to RROYY, then left turn to MOINT and hold at 12000.

NOTE: Chart not to scale.

SW-4, 16 APR 2026 to 14 MAY 2026

SW-4, 16 APR 2026 to 14 MAY 2026

PITTT TWO ARRIVAL (RNAV) Arrival Routes
(PITTT.PITTT2) 19MAR26

SALT LAKE CITY, UTAH
SALT LAKE CITY INTL (SLC)