

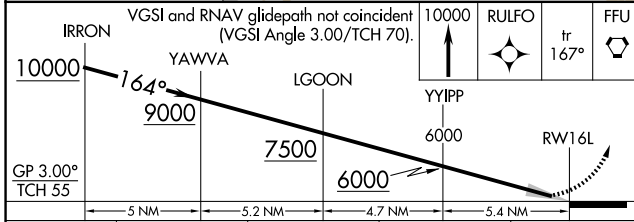
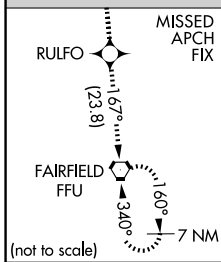
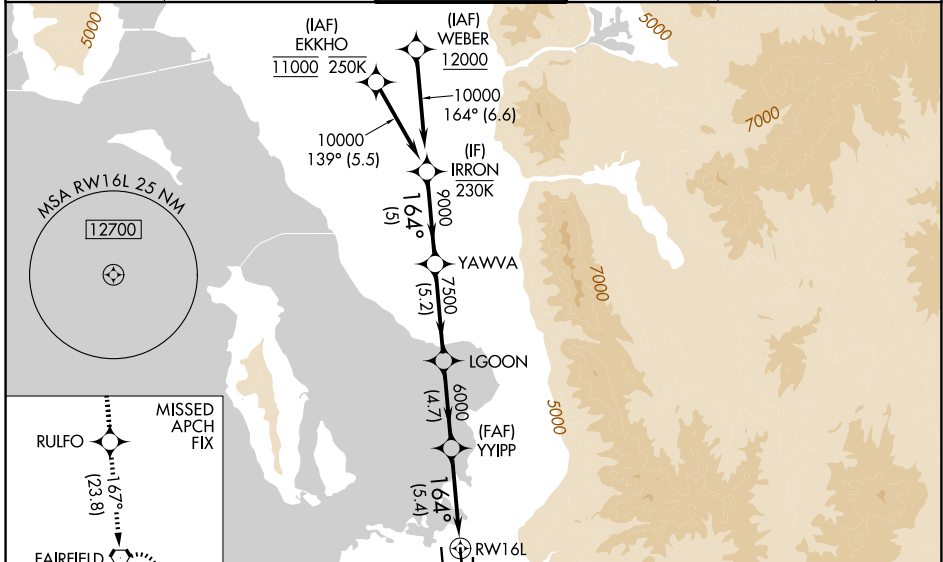
APP CRS <b>164°</b>	Rwy Ldg <b>12002</b>
	TDZE <b>4231</b>
	Apt Elev <b>4231</b>

# RNAV (RNP) Z RWY 16L

SALT LAKE CITY INTL (SLC)

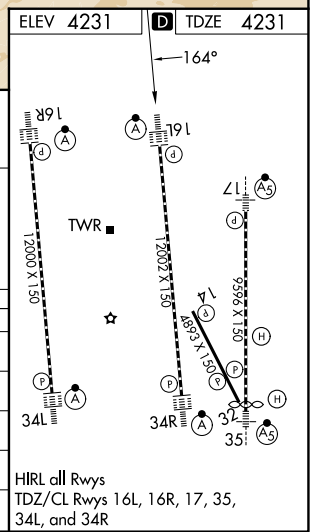
RNP AR APCH - GPS.		ALSF-2 	MISSED APPROACH: Climb to 10000 direct RULFO and on track 167° to FFU VORTAC and hold. * Missed approach requires minimum climb of 323 feet per NM to 4740. # Missed approach requires minimum climb of 256 feet per NM to 4760.
For uncompensated Baro-VNAV systems, procedure NA below -10°C or above 54°C. Simultaneous approach authorized. For inop ALS, increase RNP 0.16 all Cats visibility RVR to 5500, increase RNP 0.16 (323) all Cats visibility to RVR 4500 and increase RNP 0.30 all Cats visibility to RVR 5500.			

D-ATIS <b>124.75 125.625</b>	SALT LAKE CITY APP CON <b>125.7 284.6</b>	SALT LAKE CITY TOWER <b>119.05 257.8</b>	GND CON <b>123.775 348.6</b>	CLNC DEL <b>127.3 379.975</b>	CPDLC
---------------------------------	--	---	---------------------------------	----------------------------------	-------



CATEGORY	A	B	C	D
RNP 0.16 DA*	4516/24 285 (300-½)			NA
RNP 0.30 DA#	4565/26 334 (400-½)			
RNP 0.16 DA	4573/30 342 (400-¾)			NA
RNP 0.30 DA	4592/35 361 (400-¾)			

**AUTHORIZATION REQUIRED**



SW-4, 16 APR 2026 to 14 MAY 2026

SW-4, 16 APR 2026 to 14 MAY 2026