

APP CRS	Rwy Ldg	<b>12000</b>
<b>344°</b>	TDZE	<b>4229</b>
	Apt Elev	<b>4231</b>

# RNAV (RNP) Z RWY 34L

SALT LAKE CITY INTL (SLC)

RNP AR APCH - GPS. Authorization required. From PEFNO: RF.

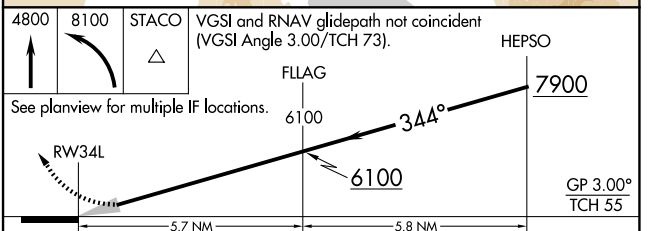
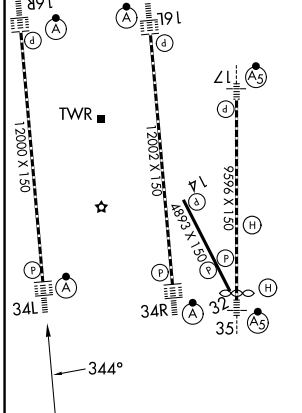
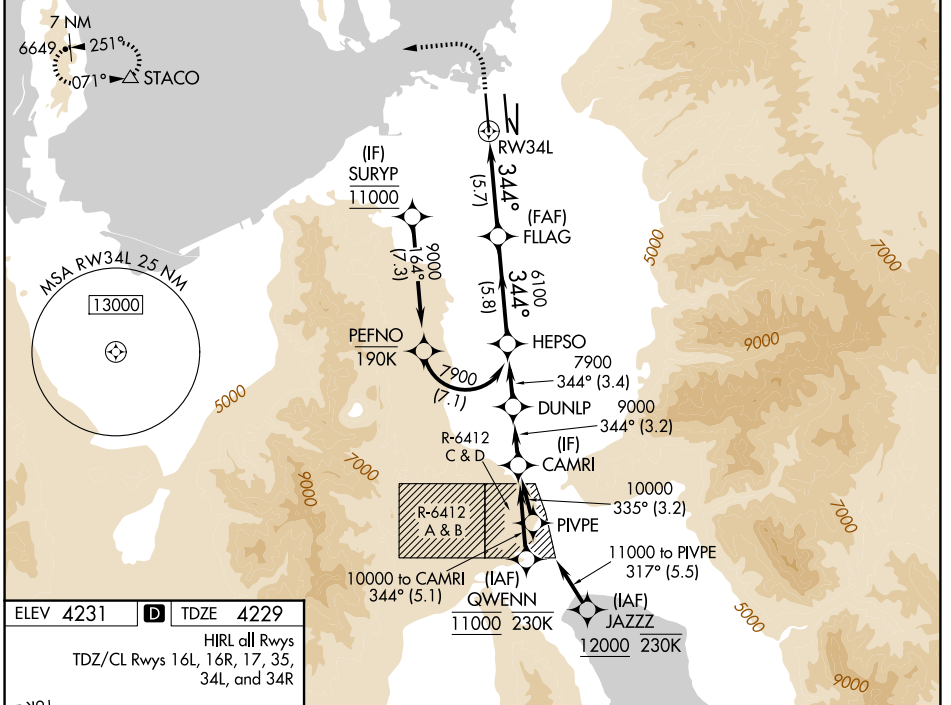
▼ For uncompensated Baro-VNAV systems, procedure NA below -10°C or above 54°C. Simultaneous approach authorized. For inop ALS, increase RNP 0.10, RNP 0.20 visibility all Cats to RVR 4500, RNP 0.30 visibility all Cats to RVR 6000.

ALSF-2

MISSED APPROACH: Climb to 4800 then climbing left turn to 8100 direct STACO and hold.

\*Missed approach requires minimum climb of 250 feet per NM to 4700.

D-ATIS	SALT LAKE CITY APP CON	SALT LAKE CITY TOWER	GND CON	CLNC DEL	CPDLC
<b>124.75 125.625</b>	<b>125.7 284.6</b>	<b>132.65 336.4</b>	<b>123.775 348.6</b>	<b>127.3 379.975</b>	



CATEGORY	A	B	C	D
RNP 0.10 DA*		4490/24	261 (300-½)	
RNP 0.20 DA		4530/24	301 (300-½)	
RNP 0.30 DA		4643/40	414 (500-¾)	

## AUTHORIZATION REQUIRED

SW-4, 16 APR 2026 to 14 MAY 2026

SW-4, 16 APR 2026 to 14 MAY 2026