

RNAV (RNP) Z RWY 34R

SALT LAKE CITY INTL (SLC)

APP CRS 344°	Rwy Ldg TDZE Apt Elev	12002 4225 4231
------------------------	-----------------------------	--

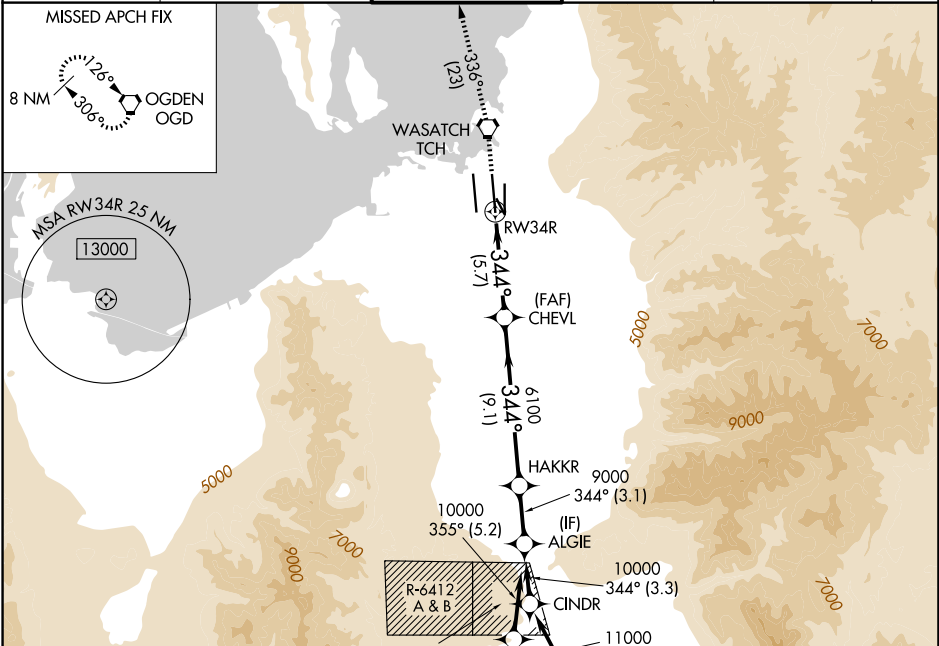
RNP AR APCH - GPS. Authorization required.

▼ For uncompensated Baro-VNAV systems, procedure NA below -10°C or above 54°C. Simultaneous approach authorized.

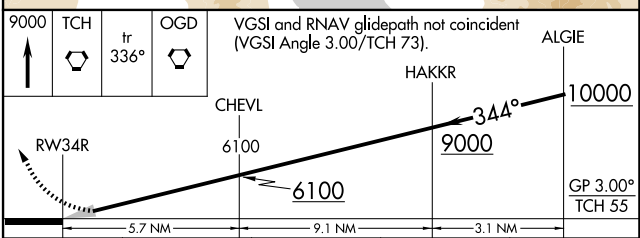
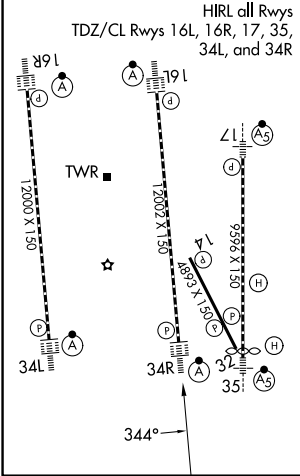
ALSF-2

MISSED APPROACH: Climb to 9000 direct TCH VORTAC and on track 336° to OGD VORTAC and hold.

D-ATIS 124.75 125.625	SALT LAKE CITY APP CON 125.7 284.6	SALT LAKE CITY TOWER 119.05 257.8	GND CON 123.775 348.6	CLNC DEL 127.3 379.975	CPDLC
---------------------------------	--	---	---------------------------------	----------------------------------	-------



ELEV 4231 **D** TDZE 4225



CATEGORY	A	B	C	D
RNP 0.10 DA		4546/26	321 (400-½)	
RNP 0.30 DA		4609/35	384 (400-¾)	

AUTHORIZATION REQUIRED

SW-4, 16 APR 2026 to 14 MAY 2026

SW-4, 16 APR 2026 to 14 MAY 2026