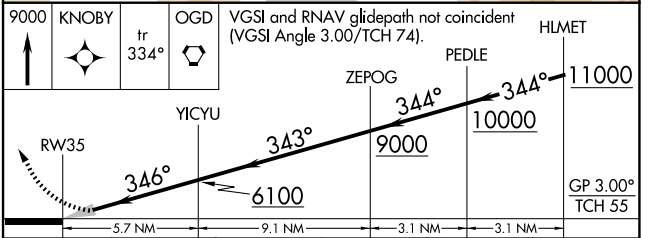
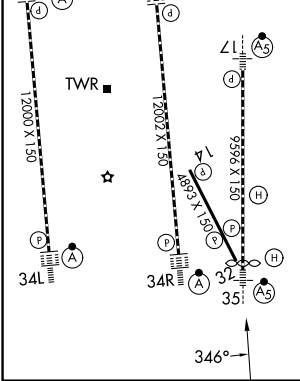
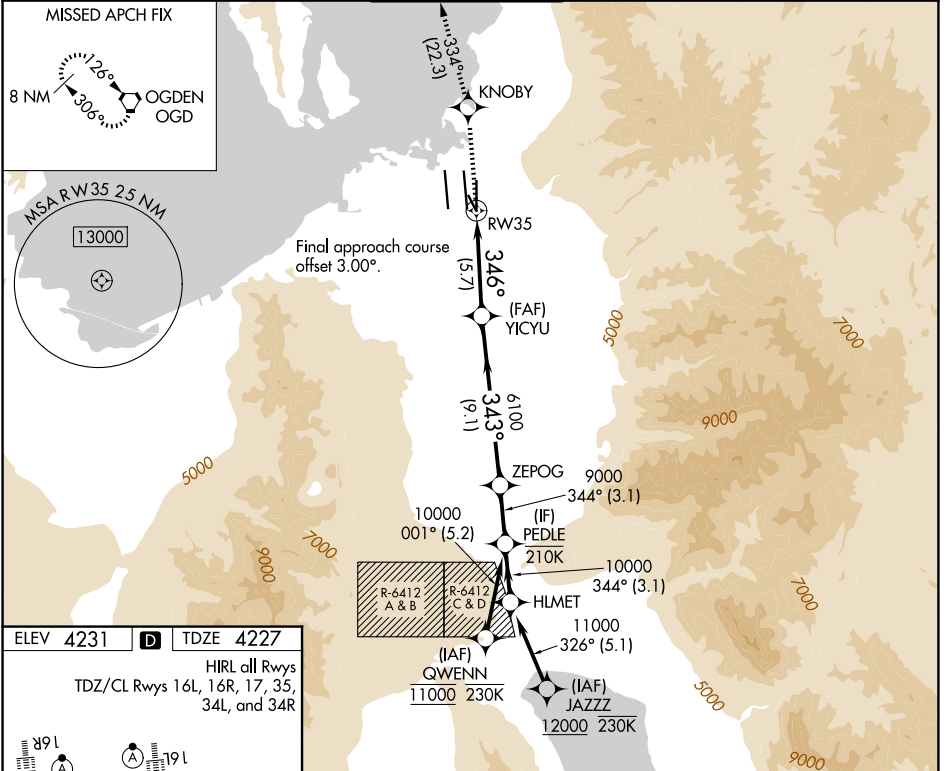


APP CRS	Rwy Ldg	9272
346°	TDZE	4227
	Apt Elev	4231

RNAV (RNP) Z RWY 35

SALT LAKE CITY INTL (SLC)

RNP AR APCH - GPS.		MALSR	MISSED APPROACH: Climb to 9000 direct KNOBY and on track 334° to OGD VORTAC and hold.					
<p>▼ For uncompensated Baro-VNAV systems, procedure NA below -10°C or above 54°C. For inop ALS, increase RNP 0.20 all Cats visibility to RVR 4500.</p>			D-ATIS	SALT LAKE CITY APP CON	SALT LAKE CITY TOWER	GND CON	CLNC DEL	CPDLC
			124.75 125.625	125.7 284.6	118.3 257.8	121.9 348.6	127.3 379.975	



CATEGORY	A	B	C	D	E
RNP 0.20 DA		4502/24	275 (300-½)		
RNP 0.30 DA		4625/35	398 (400-¾)		

AUTHORIZATION REQUIRED

SW-4, 16 APR 2026 to 14 MAY 2026

SW-4, 16 APR 2026 to 14 MAY 2026