

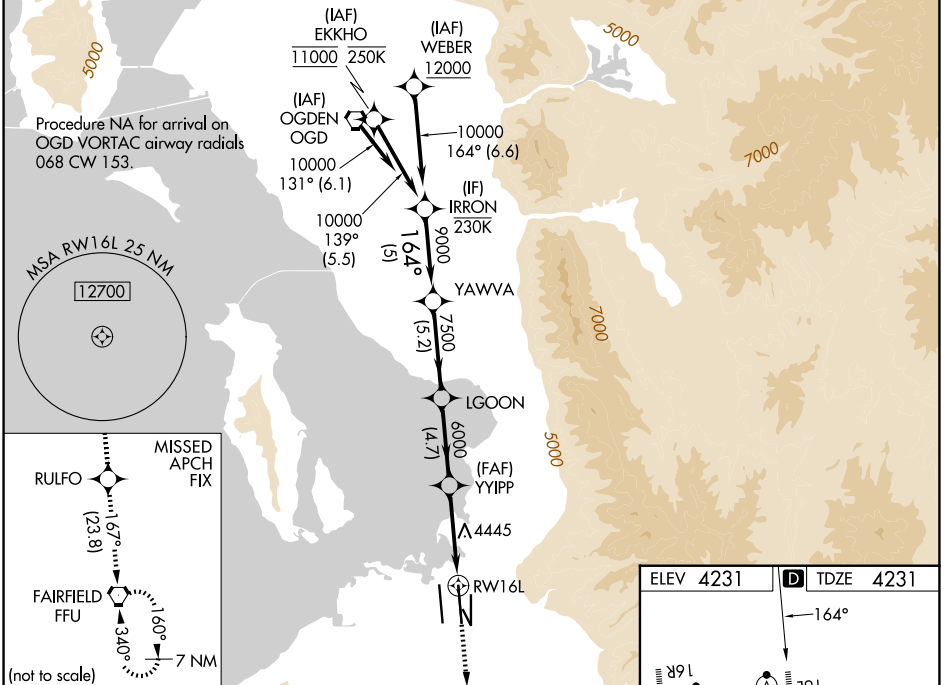
WAAS CH 70546 W16B	APP CRS 164°	Rwy Ldg 12002 TDZE 4231 Apt Elev 4231
--	------------------------	--

RNAV (GPS) Y RWY 16L

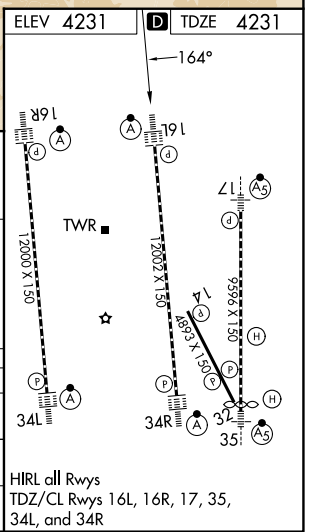
SALT LAKE CITY INTL (SLC)

RNP APCH - GPS.		ALSIF-2 	MISSED APPROACH: Climb to 10000 direct RULFO and on track 167° to FFU VORTAC and hold.
<p>▼ LNAV procedure NA during simultaneous operations. Simultaneous approach authorized. Use of FD or AP required during simultaneous operations. For uncompensated Baro-VNAV systems, LNAV/VNAV NA below -10°C or above 49°C. For inop ALS, increase LPV Cat E visibility to RVR 4000, increase LNAV/VNAV Cat A visibility to RVR 4500, increase Cats C/D visibility to RVR 5500, increase Cat E visibility to 6000, and increase LNAV Cat E visibility to 1 1/2 SM.</p>			

D-ATIS 124.75 125.625	SALT LAKE CITY APP CON 125.7 284.6	SALT LAKE CITY TOWER 119.05 257.8	GND CON 123.775 348.6	CLNC DEL 127.3 379.975	CPDLC
---------------------------------	--	---	---------------------------------	----------------------------------	-------



IRRON					YAWVA					LGOON					YYIPP					RULFO					FFU														
10000					9000					7500					6000					4445					10000					tr 167°					12000				
GP 3.00°					TCH 55					1.4 NM to RWY 16L					1.4 NM to RWY 16L					1.4 NM to RWY 16L					1.4 NM to RWY 16L					1.4 NM to RWY 16L									
5 NM					5.2 NM					4.7 NM					4 NM					1.4 NM					1.4 NM					1.4 NM									
CATEGORY		A		B		C		D		E		A		B		C		D		E		A		B		C		D		E									
LPV DA		4431/18		200 (200-1/2)		4431/18		200 (200-1/2)		4431/18		200 (200-1/2)		4431/18		200 (200-1/2)		4431/18		200 (200-1/2)		4431/18		200 (200-1/2)		4431/18		200 (200-1/2)											
LNAV/VNAV DA		4537/24		4559/26		4574/30		4593/35		4634/40		4537/24		4559/26		4574/30		4593/35		4634/40		4537/24		4559/26		4574/30		4593/35		4634/40									
LNAV MDA		4760/24		529 (600-1/2)		4760/55		529 (600-1)		4760/55		529 (600-1)		4760/55		529 (600-1)		4760/55		529 (600-1)		4760/55		529 (600-1)		4760/55		529 (600-1)											



SW-4, 16 APR 2026 to 14 MAY 2026

SW-4, 16 APR 2026 to 14 MAY 2026