

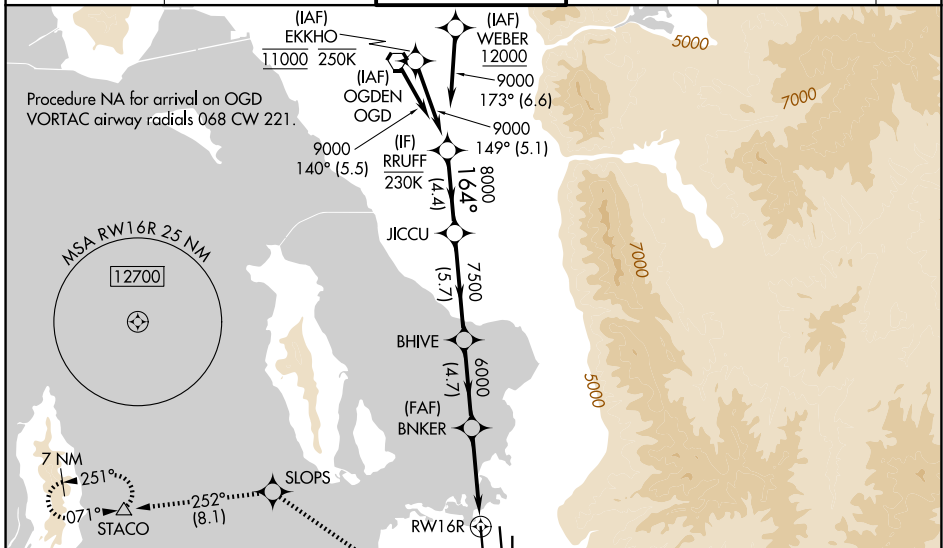
WAAS CH 42746 W16A	APP CRS 164°	Rwy Ldg TDZE 4226 Apt Elev 4231
--	------------------------	---

RNAV (GPS) Y RWY 16R

SALT LAKE CITY INTL (SLC)

<p>RNP APCH - GPS.</p> <p>⚠ Simultaneous approach authorized. LNAV procedure NA during simultaneous operations. Use of FD or AP required during simultaneous operations. For uncompensated Baro-VNAV systems, LNAV/VNAV NA below -10°C or above 50°C. For inop ALS, increase LPV* Cat E visibility to RVR 4000, increase LPV Cat E visibility to RVR 4500, increase LNAV/VNAV Cat E visibility to RVR 6000, increase LNAV# Cat E visibility to 1 3/8 SM, increase LNAV Cats C/D visibility to 1 1/2 SM, and increase LNAV Cat E visibility to 2 1/2 SM. Cat E restricted to USAF/USN aircraft.</p>		<p>ALSF-2</p> <p>MISSED APPROACH: Climb to 4700 then climbing right turn to 8900 direct SLOPS and on track 252° to STACO and hold, continue climb-in-hold.</p> <p>*Missed approach requires minimum climb of 225 feet per NM to 6400 for Cat E aircraft. #Missed approach requires minimum climb of 210 feet per NM to 6200 for Cat E aircraft.</p>
--	--	---

D-ATIS 124.75 125.625	SALT LAKE CITY APP CON 125.7 284.6	SALT LAKE CITY TOWER 132.65 336.4	GND CON 123.775 348.6	CLNC DEL 127.3 379.975	CPDLC
---------------------------------	--	---	---------------------------------	----------------------------------	-------



<p>VGSI and RNAV glidepath not coincident (VGSI Angle 3.00/TCH 73).</p> <p>RRUFF</p> <p>JICCU</p> <p>BHIVE</p> <p>BNKER</p> <p>STACO</p> <p>4700 8900 SLOPS tr 252°</p> <p>9000 8000 7500 6000</p> <p>GP 3.00° TCH 54</p> <p>4.4 NM 5.7 NM 4.7 NM 4 NM 1.4</p>		<p>ELEV 4231 D TDZE 4226</p> <p>164°</p> <p>TWR</p> <p>34L</p> <p>34R</p> <p>35L</p> <p>35R</p>			
CATEGORY	A	B	C	D	E
LPV DA*	NA				4426/18 200 (200-1/2)
LPV DA	4426/18 200 (200-1/2)				4489/20 263 (300-1/2)
LNAV/VNAV DA	4620/35 394 (400-5/8)				
LNAV MDA#	NA				4740/55 514 (600-1)
LNAV MDA	4740/24 514 (600-1/2)	4740/55 514 (600-1)		5000-1 3/4 774 (800-1 1/4)	

SW-4, 16 APR 2026 to 14 MAY 2026

SW-4, 16 APR 2026 to 14 MAY 2026