

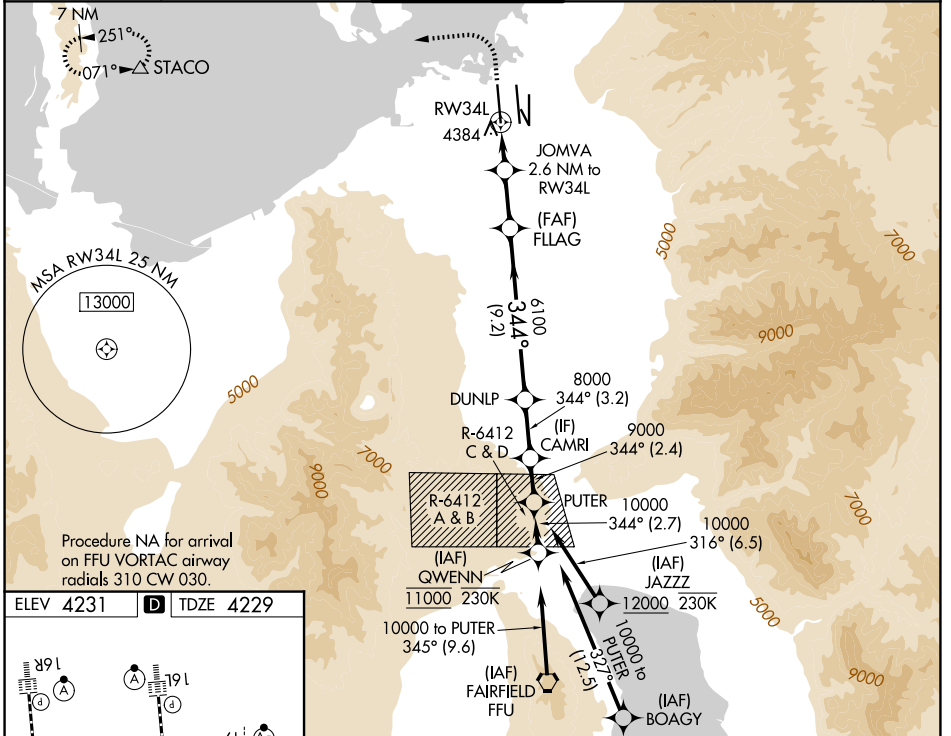
WAAAS CH 70432 W34B	APP CRS 344°	Rwy Ldg TDZE Apt Elev	12000 4229 4231
---	------------------------	-----------------------------	--

RNAV (GPS) Y RWY 34L

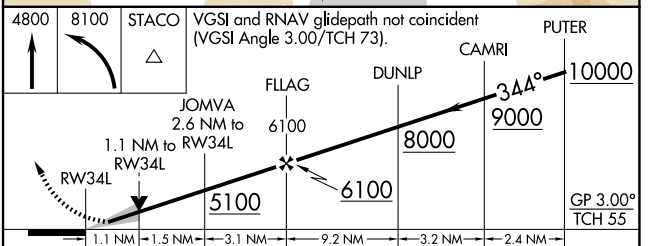
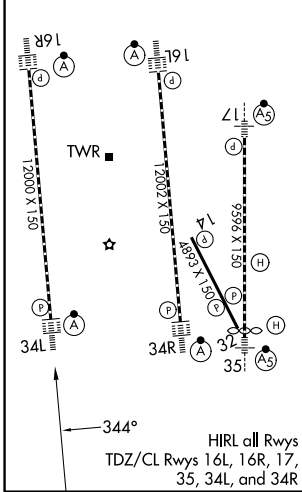
SALT LAKE CITY INTL (SLC)

RNP APCH - GPS.	ALSF-2 	MISSED APPROACH: Climb to 4800 then climbing left turn to 8100 direct STACO and hold.
Simultaneous approach authorized. LNAV procedure NA during simultaneous operations. Use of FD or AP providing RNAV track guidance required during simultaneous operations. For uncompensated Baro-VNAV systems, LNAV/VNAV NA below -10°C or above 49°C. For inop ALS, increase LPV Cat E visibility to RVR 4000, LNAV/VNAV all Cats visibility to RVR 6000, LNAV Cat E visibility to 1/4 SM. Cat E restricted to USAF/USN aircraft.		

D-ATIS 124.75 125.625	SALT LAKE CITY APP CON 125.7 284.6	SALT LAKE CITY TOWER 132.65 336.4	GND CON 123.775 348.6	CLNC DEL 127.3 379.975	CPDLC
---------------------------------	--	---	---------------------------------	----------------------------------	-------



ELEV 4231	D	TDZE 4229
-----------	----------	-----------



CATEGORY	A	B	C	D	E
LPV DA		4429/18	200 (200-1/2)		
LNAV/VNAV DA		4640/40	411 (500-3/4)		
LNAV MDA	4660/24	431 (500-1/2)		4660/40	431 (500-3/4)

SW-4, 16 APR 2026 to 14 MAY 2026

SW-4, 16 APR 2026 to 14 MAY 2026