

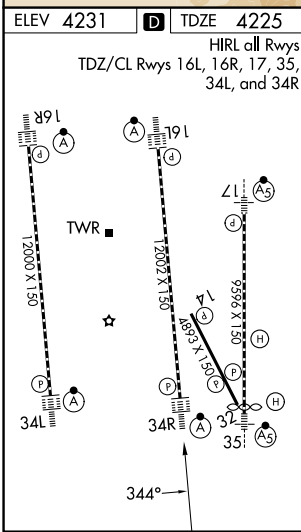
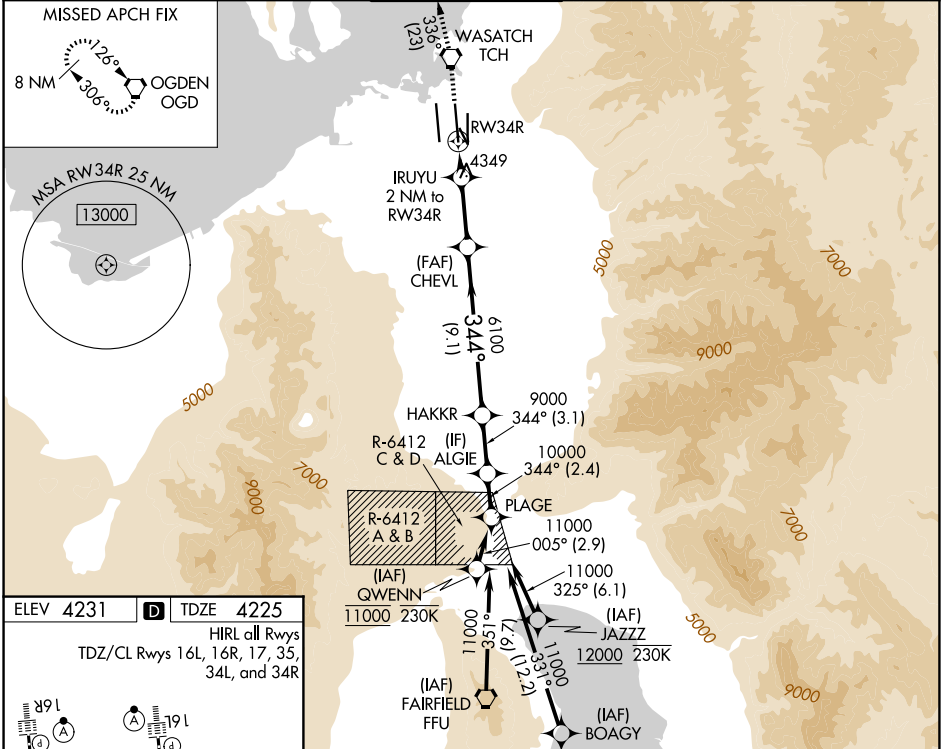
WAA5 CH 49230 W34A	APP CRS 344°	Rwy Ldg TDZE 4225 Apt Elev 4231
--	------------------------	---

RNAV (GPS) Y RWY 34R

SALT LAKE CITY INTL (SLC)

RNP APCH - GPS		ALSF-2	MISSED APPROACH: Climb to 9000 direct TCH VORTAC and on track 336° to OGD VORTAC and hold.
<p>Simultaneous approach authorized. For uncompensated Baro-VNAV systems, LNAV/VNAV NA below -10°C or above 49°C. Use of FD or AP providing RNAV track guidance required during simultaneous operations. LNAV procedure NA during simultaneous operations. For inop ALS, increase LPV Cat E visibility to RVR 4000, LNAV/VNAV Cat E visibility to RVR 5000, LNAV Cots C/D visibility to RVR 5500, LNAV Cat E visibility to RVR 6000. Cat E restricted to USAF/USN aircraft.</p>			

D-ATIS	SALT LAKE CITY APP CON	SALT LAKE CITY TOWER	GND CON	CLNC DEL	CPDLC
124.75 125.625	125.7 284.6	119.05 257.8	123.775 348.6	127.3 379.975	



9000	TCH	OGD	VGSI and RNAV glidepath not coincident (VGSI Angle 3.00/TCH 73).	PLAGE			
↑	tr 336°			ALGIE			
		CHEVL	HAKKR	11000			
		IRUYU 2 NM to RWY 34R		10000			
		1 NM to RWY 34R		9000			
		4900	6100	344°			
		1 NM	1 NM	3.8 NM	9.1 NM	3.1 NM	2.4 NM
CATEGORY	A	B	C	D	E		
LPV DA	4425/18 200 (200-½)						
LNAV/VNAV DA	4557/26 332 (400-½)						
LNAV MDA	4600/24	375 (400-½)	4600/35	375 (400-⅝)	4640/40	415 (500-¾)	

SW-4, 16 APR 2026 to 14 MAY 2026

SW-4, 16 APR 2026 to 14 MAY 2026