

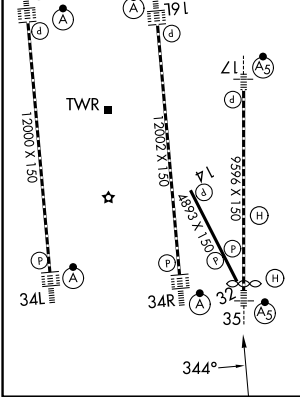
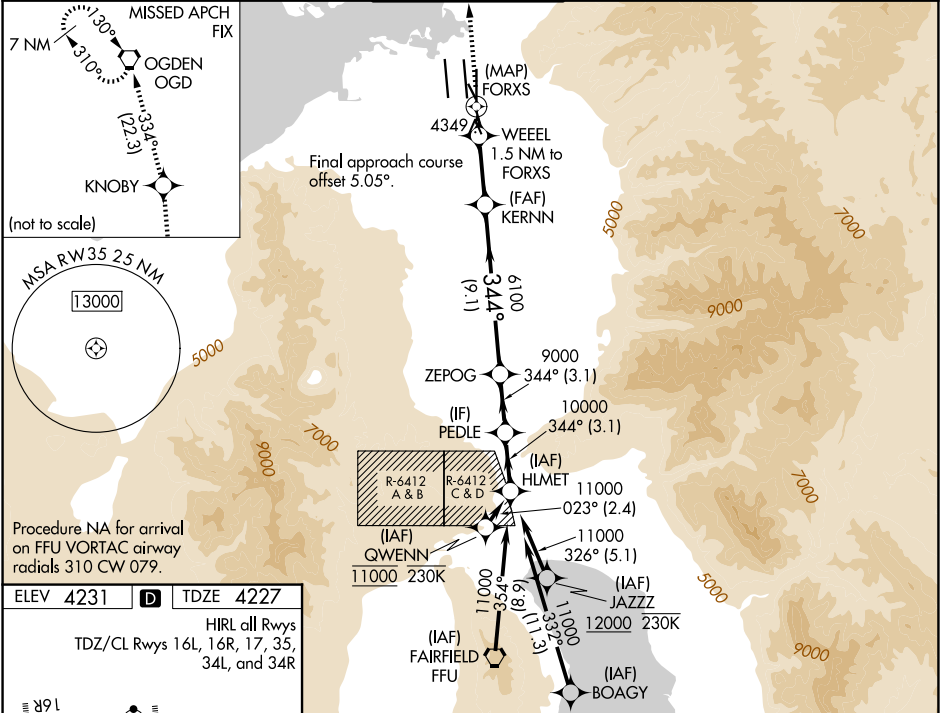
WAAS CH 42843 W35A	APP CRS 344°	Rwy Ldg TDZE Apt Elev	9272 4227 4231
--	------------------------	-----------------------------	---

RNAV (GPS) Y RWY 35

SALT LAKE CITY INTL (SLC)

RNP APCH - GPS.	MALSRL 	MISSED APPROACH: Climb to 9000 direct KNOBY and on track 334° to OGD VORTAC and hold.
<p>Simultaneous approach authorized. LNAV procedure NA during simultaneous operations. For uncompensated Baro-VNAV systems, LNAV/VNAV NA below -23°C or above 49°C. Use of FD or AP required during simultaneous operations. For inop ALS, increase LPV Cat E visibility to RVR 4000, increase LNAV/VNAV all Cats visibility to RVR 4500, and increase LNAV Cats C/D/E visibility to RVR 5500.</p>		

D-ATIS 124.75 125.625	SALT LAKE CITY APP CON 125.7 284.6	SALT LAKE CITY TOWER 118.3 257.8	GND CON 121.9 348.6	CLNC DEL 127.3 379.975	CPDLC
---------------------------------	--	--	-------------------------------	----------------------------------	-------



ELEV 4231	TDZE 4227	HIRL all Rwy's TDZ/CL Rwy's 16L, 16R, 17, 35, 34L, and 34R							
9000	KNOBY	OGD	VGS1 and RNAV glidepath not coincident (VGS1 Angle 3.00/TCH 74).			HLMET			
↑		tr 334°	WEEL	ZEPOG	PEDLE	11000			
			0.5 NM to FORXS	1.5 NM to FORXS	344°	GP 3.00° TCH 55			
			4900	6100	9000				
			0.4	0.5	1 NM	3.8 NM	9.1 NM	3.1 NM	3.1 NM
CATEGORY	A	B	C	D	E				
LPV DA	4478/24 251 (300-½)								
LNAV/VNAV DA	4500/24 273 (300-½)		4507/24 280 (300-½)		4547/24 320 (400-½)				
LNAV MDA	4600/24 373 (400-½)		4600/40 373 (400-¾)						

SW-4, 16 APR 2026 to 14 MAY 2026

SW-4, 16 APR 2026 to 14 MAY 2026