

(BEARR.SKEES6) 25051

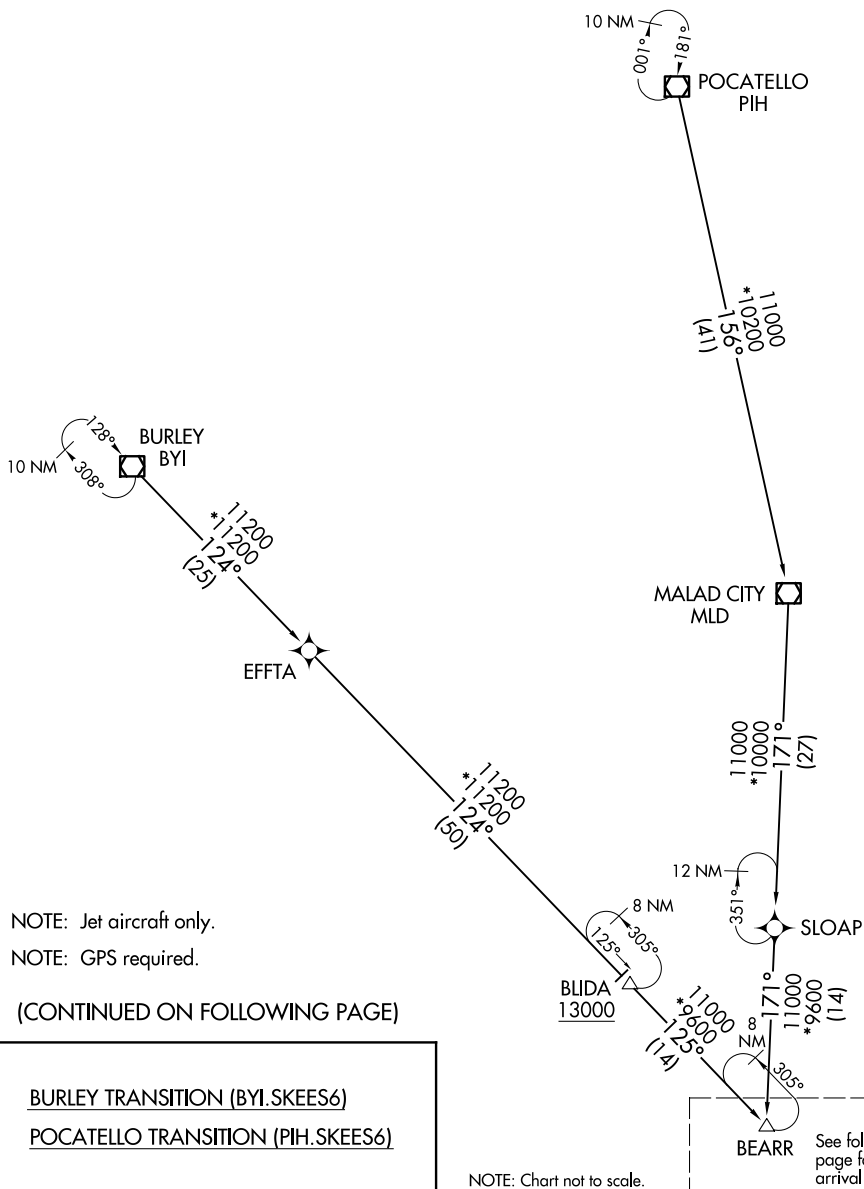
# SKEES SIX ARRIVAL (RNAV) Transition Routes AL-365 (FAA)

SALT LAKE CITY INTL (SLC)  
SALT LAKE CITY, UTAH

SALT LAKE CITY APP CON  
124.9 290.3  
D-ATIS  
124.75 125.625

RNAV 1 - GPS.

RADAR required.



NOTE: Jet aircraft only.

NOTE: GPS required.

(CONTINUED ON FOLLOWING PAGE)

BURLEY TRANSITION (BYI.SKEES6)

POCATELLO TRANSITION (PIH.SKEES6)

NOTE: Chart not to scale.

See following page for arrival routes

SW-4, 16 APR 2026 to 14 MAY 2026

SW-4, 16 APR 2026 to 14 MAY 2026

# SKEES SIX ARRIVAL (RNAV) Transition Routes

(BEARR.SKEES6) 20FEB25

SALT LAKE CITY, UTAH  
SALT LAKE CITY INTL (SLC)

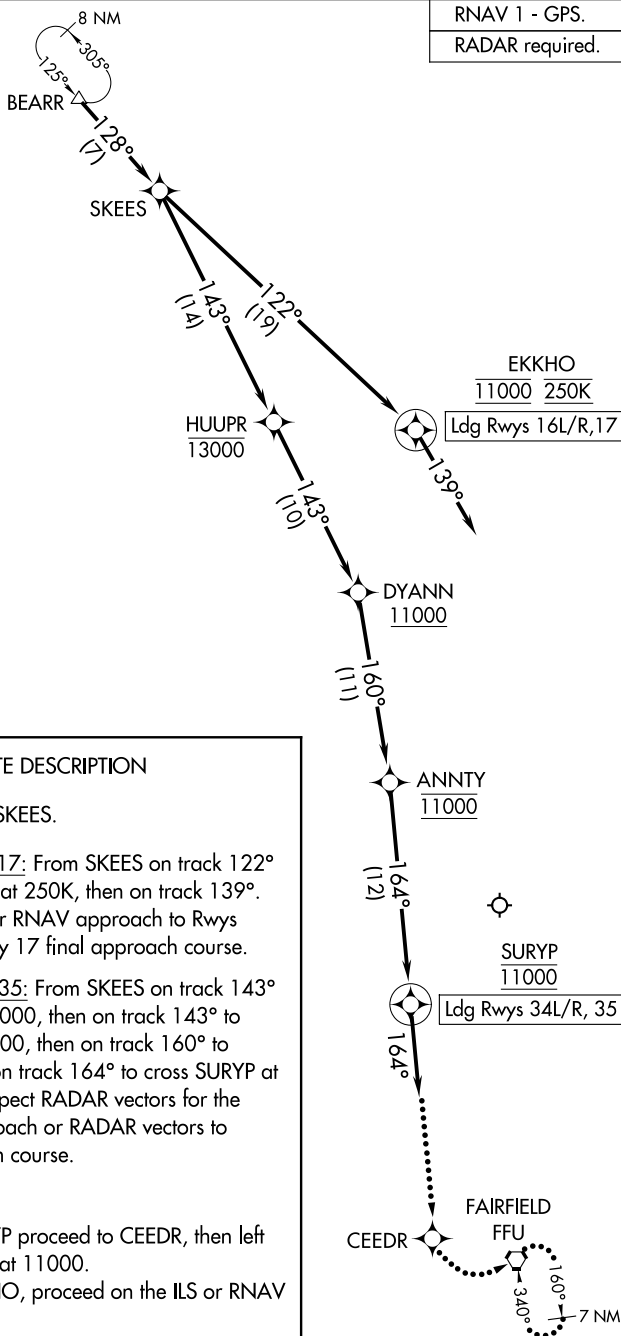
# SKEES SIX ARRIVAL (RNAV) Arrival Routes

AL-365 (FAA)

SALT LAKE CITY INTL (SLC)  
SALT LAKE CITY, UTAH

SALT LAKE CITY APP CON  
124.9 290.3  
D-ATIS  
124.75 125.625

RNAV 1 - GPS.  
RADAR required.



NOTE: Jet aircraft only.  
NOTE: GPS required.

NOTE: Chart not to scale.

### ARRIVAL ROUTE DESCRIPTION

From BEARR on track 128° to SKEES.

**LANDING RUNWAYS 16L/R, 17:** From SKEES on track 122° to cross EKKHO at 11000 and at 250K, then on track 139°. Expect RADAR vectors for ILS or RNAV approach to Rwys 16L/R or RADAR vectors to Rwy 17 final approach course.

**LANDING RUNWAYS 34L/R, 35:** From SKEES on track 143° to cross HUUPR at or below 13000, then on track 143° to cross DYANN at or above 11000, then on track 160° to cross ANNTY at 11000, then on track 164° to cross SURYP at 11000, then on track 164°. Expect RADAR vectors for the RNAV (RNP) Z RWY 34L approach or RADAR vectors to Rwys 34L/R, 35 final approach course.

### LOST COMMUNICATIONS

**LANDING NORTH:** After SURYP proceed to CEEDR, then left turn to FFU VORTAC and hold at 11000.

**LANDING SOUTH:** After EKKHO, proceed on the ILS or RNAV RWY 16L approach.

# SKEES SIX ARRIVAL (RNAV) Arrival Routes

SALT LAKE CITY, UTAH  
SALT LAKE CITY INTL (SLC)

SW-4, 16 APR 2026 to 14 MAY 2026

SW-4, 16 APR 2026 to 14 MAY 2026