

ALAMO FIVE DEPARTURE

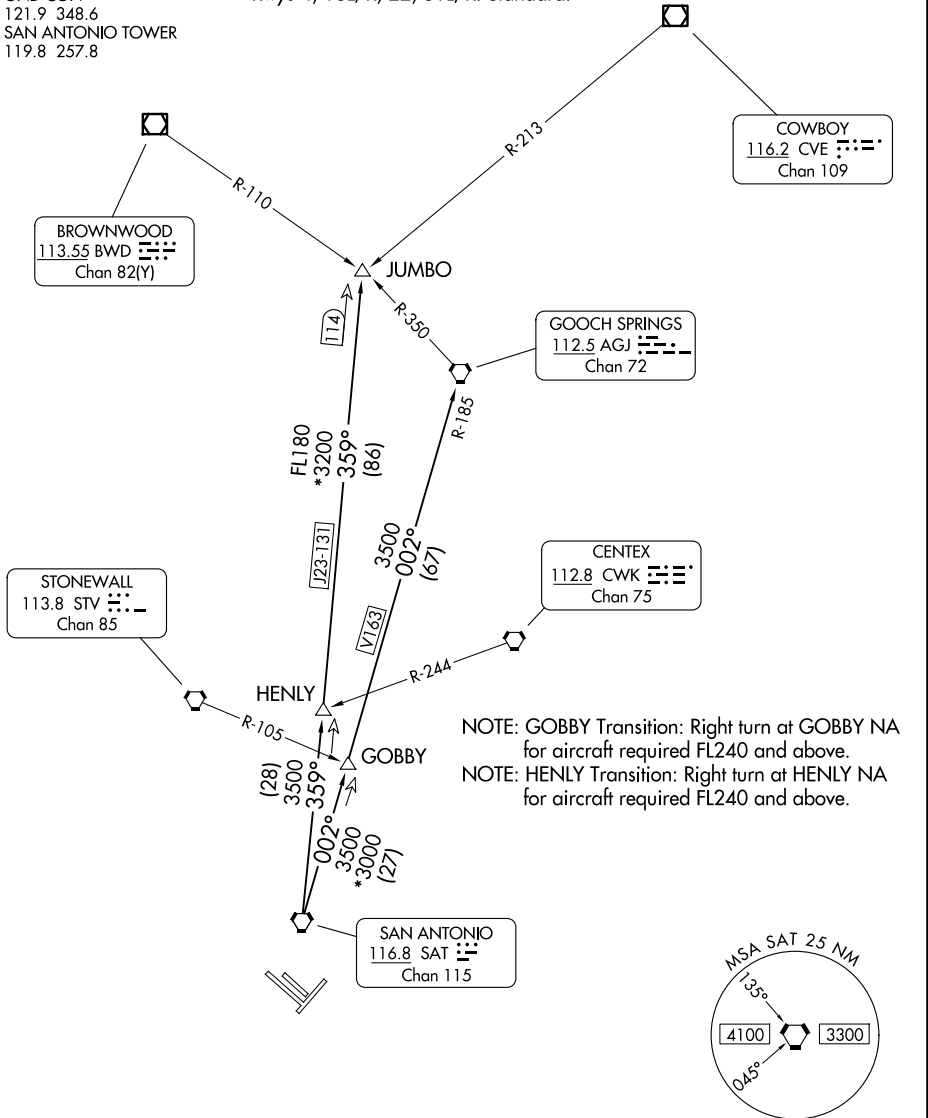
RADAR required.

**TOP ALTITUDE:
5000**

SAN ANTONIO DEP CON
125.1 307.0 (4, 22, 31)
127.1 269.1 (13)
D-ATIS
118.9
CLNC DEL
126.7
CPDLC
GND CON
121.9 348.6
SAN ANTONIO TOWER
119.8 257.8

TAKEOFF MINIMUMS

Rwys 4, 13L/R, 22, 31L/R: Standard.



STONEWALL
113.8 STV
Chan 85

BROWNWOOD
113.55 BWD
Chan 82(Y)

GOOCH SPRINGS
112.5 AGJ
Chan 72

CENTEX
112.8 CWK
Chan 75

COWBOY
116.2 CVE
Chan 109

114

359°
(86)

FL180
*3200

3500
002°
(67)

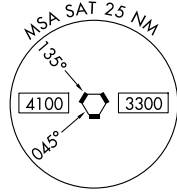
359°
(28)

3500
*3000
(27)

NOTE: GOBBY Transition: Right turn at GOBBY NA for aircraft required FL240 and above.

NOTE: HENLY Transition: Right turn at HENLY NA for aircraft required FL240 and above.

SAN ANTONIO
116.8 SAT
Chan 115



NOTE: Chart not to scale.

(CONTINUED ON FOLLOWING PAGE)

SC-3, 16 APR 2026 to 14 MAY 2026

SC-3, 16 APR 2026 to 14 MAY 2026

ALAMO FIVE DEPARTURE



DEPARTURE ROUTE DESCRIPTION

TAKEOFF RUNWAYS 4, 13L/R, 22, 31L/R: Climb on assigned heading for RADAR vectors to SAT VORTAC, maintain 5000, then on transition/route. Expect filed altitude 10 minutes after departure.

GOBBY TRANSITION (ALAMO5.GOBBY): From over SAT VORTAC on SAT R-002 to GOBBY.

GOOCH SPRINGS TRANSITION (ALAMO5.AGJ): From over SAT VORTAC on SAT R-002 to GOBBY, then on SAT R-002 and AGJ R-185 to AGJ VORTAC.

HENLY TRANSITION (ALAMO5.HENLY): From over SAT VORTAC on SAT R-359 to HENLY.

JUMBO TRANSITION (ALAMO5.JUMBO): From over SAT VORTAC on SAT R-359 to JUMBO.

SC-3, 16 APR 2026 to 14 MAY 2026

SC-3, 16 APR 2026 to 14 MAY 2026