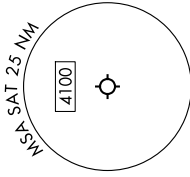


ALISS SEVEN DEPARTURE (RNAV)

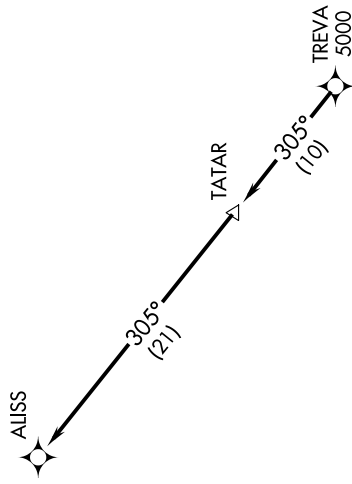
SC-3, 16 APR 2026 to 14 MAY 2026

TOP ALTITUDE:
5000



RNAV 1 - DME/DME/IRU or GPS.
 RADAR required for non-GPS equipped aircraft.
 RADAR required.

SAN ANTONIO DEP CON
 125.1 307.0 (31L/R)
 125.7 290.225 (13L/R, 22)
 127.1 269.1 (4)
 D-ATIS
 118.9
 CLNC DEL
 126.7
 CPDLC
 GND CON
 121.9 348.6
 SAN ANTONIO TOWER
 119.8 257.8



TAKEOFF MINIMUMS
 Rwys 4, 13L/R, 22, 31L/R: Standard.

DEPARTURE ROUTE DESCRIPTION

TAKEOFF RUNWAY 4: Climb on heading 037° or as assigned by ATC, for vectors to TREVA, thence. . . .

TAKEOFF RUNWAYS 13L/R: Climb on heading 128° or as assigned by ATC, for vectors to TREVA, thence. . . .

TAKEOFF RUNWAY 22: Climb on heading 217° or as assigned by ATC, for vectors to TREVA, thence. . . .

TAKEOFF RUNWAYS 31L/R: Climb on heading 308° or as assigned by ATC, for vectors to TREVA, thence. . . .

. . . on track 305° to TATAR, then on track 305° to ALISS. Maintain 5000. Expect filed altitude 10 minutes after departure.

NOTE: Chart not to scale.

ALISS SEVEN DEPARTURE (RNAV)

SC-3, 16 APR 2026 to 14 MAY 2026