

(CRVZA.CRVZA2) 27NOV25

CRVZA TWO ARRIVAL (RNAV) Transition Routes

SAN ANTONIO, TEXAS

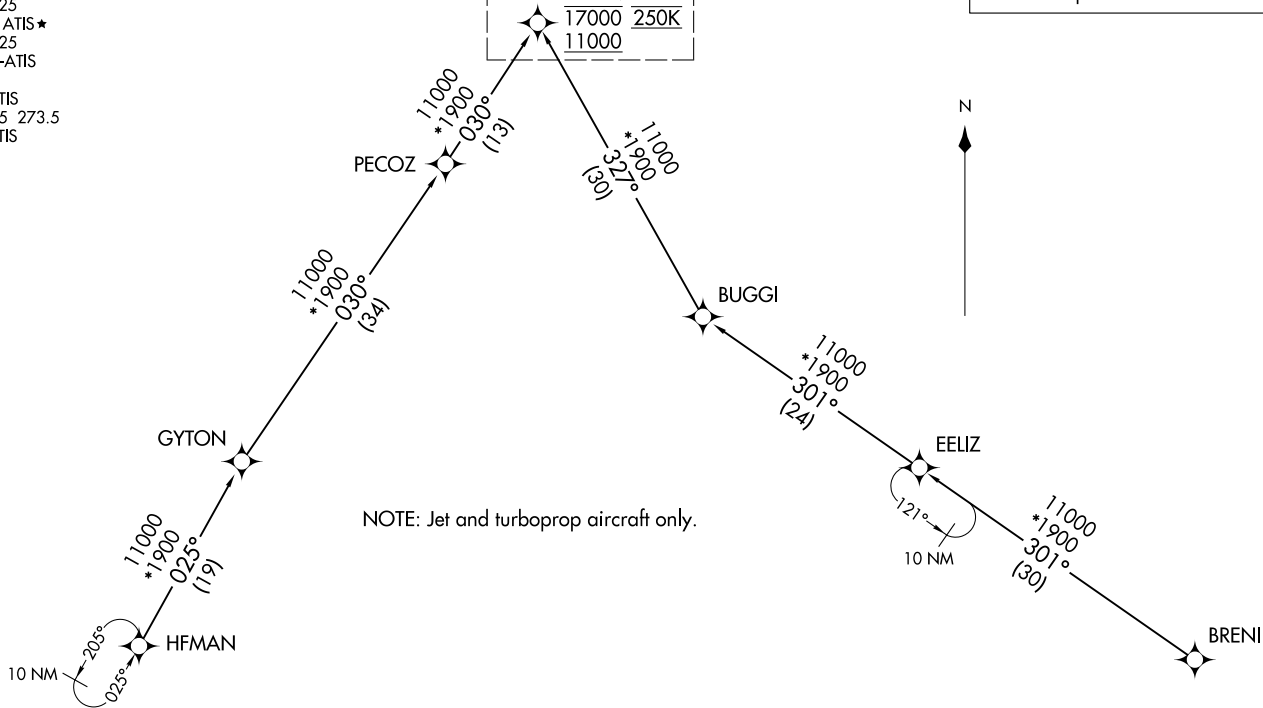
SAN ANTONIO APP CON
125.7 290.225
BAZ ATIS
119.325
KRND ATIS ★
290.525
SAT D-ATIS
118.9
SKF ATIS
120.45 273.5
SSF ATIS
128.8

See following page
for arrival routes.

CRVZA
17000 250K
11000

RNAV 1 - DME/DME/IRU or GPS.

RADAR required.



NOTE: Jet and turboprop aircraft only.

BRENI TRANSITION (BRENI.CRVZA2)
EELIZ TRANSITION (EELIZ.CRVZA2)
HFMAN TRANSITION (HFMAN.CRVZA2)

(CONTINUED ON FOLLOWING PAGE)

NOTE: Chart not to scale.

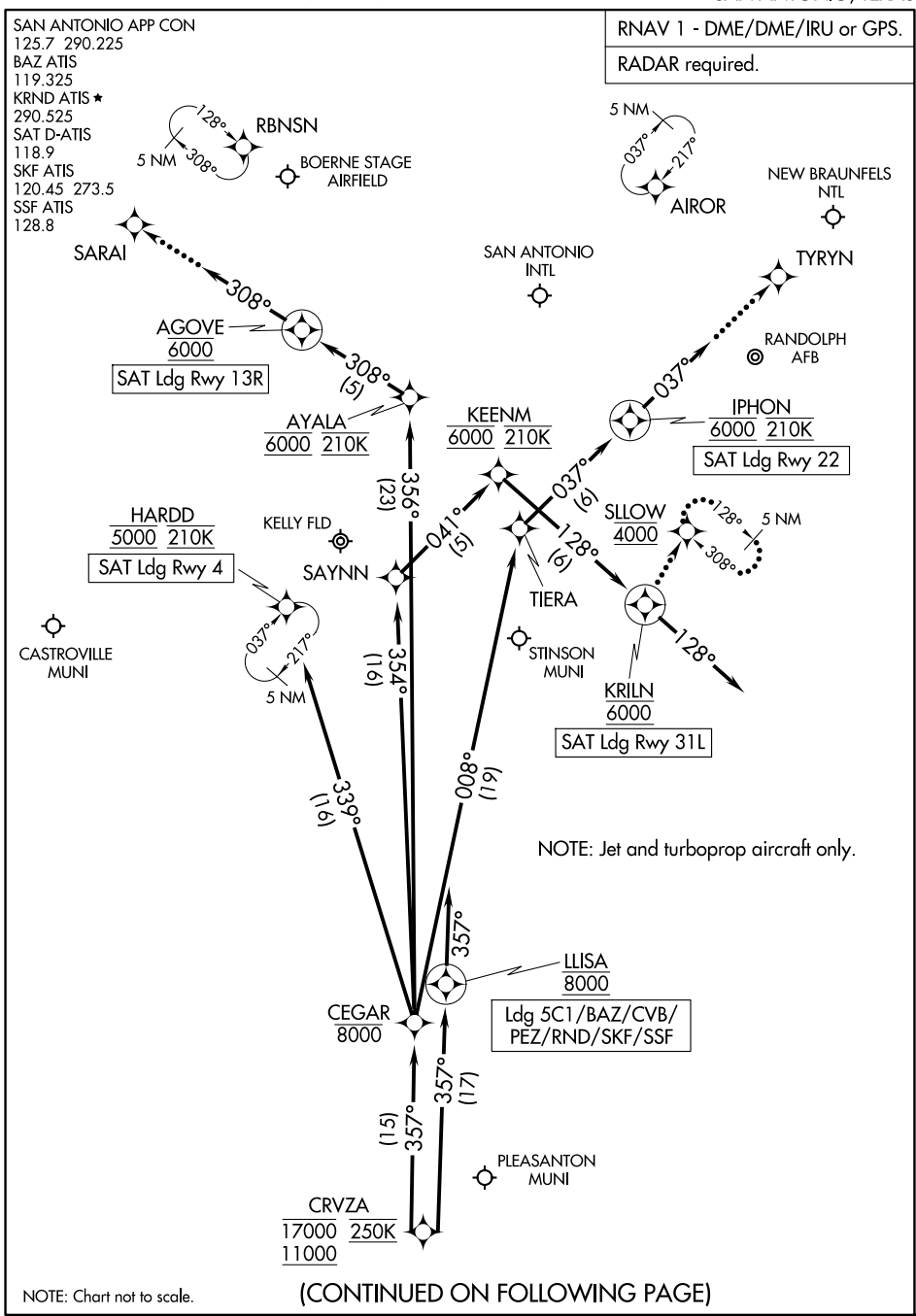
(CRVZA.CRVZA2) 25331

AL-369 (FAA)
CRVZA TWO ARRIVAL (RNAV) Transition Routes

SAN ANTONIO, TEXAS

CRVZA TWO ARRIVAL (RNAV) Arrival Routes

SAN ANTONIO, TEXAS



SC-3, 16 APR 2026 to 14 MAY 2026

SC-3, 16 APR 2026 to 14 MAY 2026

CRVZA TWO ARRIVAL (RNAV) Arrival Routes

SAN ANTONIO, TEXAS

ARRIVAL ROUTE DESCRIPTION

SAN ANTONIO INTL (SAT): From CRVZA on track 357° to cross CEGAR at or below 8000.

LANDING SAT RUNWAY 4: From CEGAR on track 339° to cross HARDD at 5000 and at 210K. Expect ILS or LOC RWY 4 approach.

LANDING SAT RUNWAY 13R: From CEGAR on track 356° to cross AYALA at 6000 and at 210K, then on track 308° to cross AGOVE at 6000, then on track 308°. Expect RADAR vectors to final approach course.

LANDING SAT RUNWAY 22: From CEGAR on track 008° to TIERA, then on track 037° to cross IPHON at 6000 and at 210K, then on track 037°. Expect RADAR vectors to final approach course.

LANDING SAT RUNWAY 31L: From CEGAR on track 354° to SAYNN, then on track 041° to cross KEENM at 6000 and at 210K, then on track 128° to cross KRILN at 6000, then on track 128°. Expect RADAR vectors to final approach course.

LANDING SKF/BAZ/CVB/SSF/PEZ/5C1/RND: From CRVZA on track 357° to cross LLISA at 8000, then on track 357°. Expect RADAR vectors to final approach course.

LOST COMMUNICATIONS

SAT RUNWAY 13R: After AGOVE proceed to SARAI, then on ILS or LOC RWY 13R or RNAV (GPS) Y RWY 13R approach.

SAT RUNWAY 22: After IPHON proceed to TYRYN, then on RNAV (GPS) Y RWY 22 approach.

SAT RUNWAY 31L: After KRILN proceed to SLOW at 4000 and hold.

SC-3, 16 APR 2026 to 14 MAY 2026

SC-3, 16 APR 2026 to 14 MAY 2026