

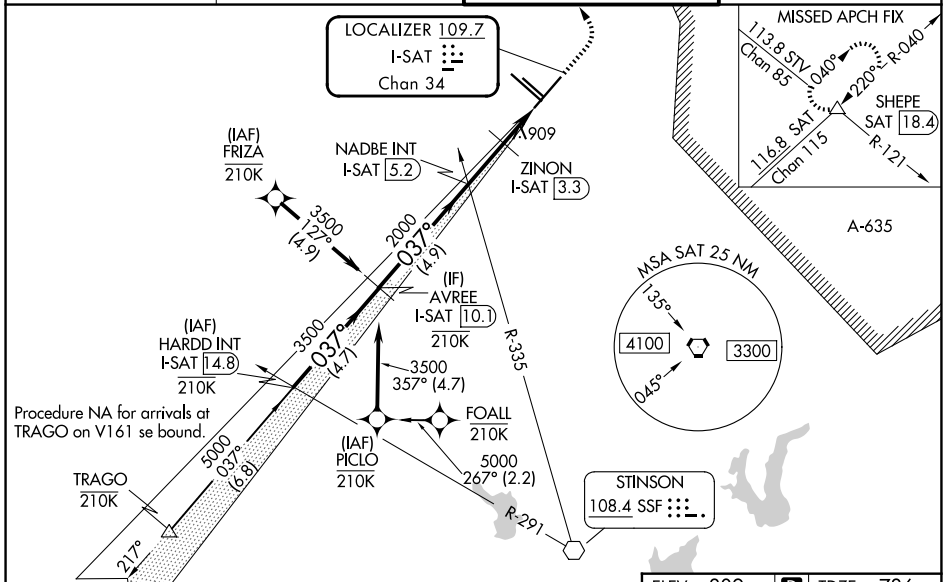
LOC/DME I-SAT 109.7 Chan 34	APP CRS 037°	Rwy Ldg 8505 TDZE 786 Apt Elev 809
---	------------------------	---

ILS or LOC RWY 4

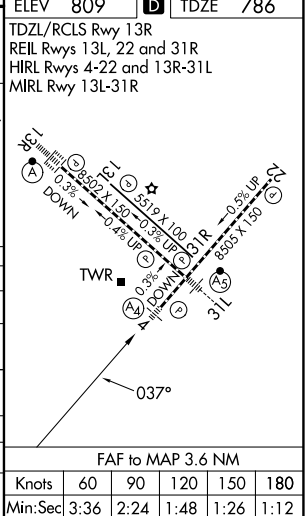
SAN ANTONIO INTL (SAT)

RNP APCH-GPS. From TRAGO or PICLO or FRIZA.		MALS A1	MISSED APPROACH: Climb to 1700 then climbing left turn to 3500 on heading 025° and on SAT VORTAC R-040 to SHEPE INT/SAT 18.4 DME and hold.
Aircraft not GPS equipped - RADAR required for procedure entry.			
<p>▼ Circling NA northwest of Rws 4 and 13R. Autopilot coupled approach NA below 1189. Inop table does not apply to S-ILS 4. For inop ALS, increase S-LOC 4 Cat C/D visibility to RVR 6000.</p> <p>▲ NA</p>			

D-ATIS 118.9	SAN ANTONIO APP CON 125.1 307.0	SAN ANTONIO TOWER 119.8 257.8	GND CON 121.9 348.6
------------------------	---	---	-------------------------------



VGSIs and ILS glidepath not coincident (VGSIs Angle 3.00/TCH 79).		1700	3500	SAT	SHEPE
HARDD INT I-SAT 14.8		AVREE I-SAT 10.1	NADBE INT I-SAT 5.2	ZINON I-SAT 3.3	See planview for multiple IF locations.
5000		3500	2000	1200	
GS 3.00° TCH 56					
-4.7 NM		-4.9 NM	-1.9 NM	0.9 NM	0.8 NM
CATEGORY	A	B	C	D	
S-ILS 4		986/40	200 (200-¾)		
S-LOC 4	1200/40	414 (400-¾)	1200/50	414 (400-1)	
CIRCLING	1280-1 471 (500-1)	1340-1 531 (600-1)	1420-1¾ 611 (700-1¾)	1520-2¼ 711 (800-2¼)	
ZINON FIX MINIMUMS (DME REQUIRED)					
S-LOC 4		1120/40	334 (400-¾)		
CIRCLING	1280-1 471 (500-1)	1340-1 531 (600-1)	1420-1¾ 611 (700-1¾)	1520-2¼ 711 (800-2¼)	



SC-3, 16 APR 2026 to 14 MAY 2026

SC-3, 16 APR 2026 to 14 MAY 2026