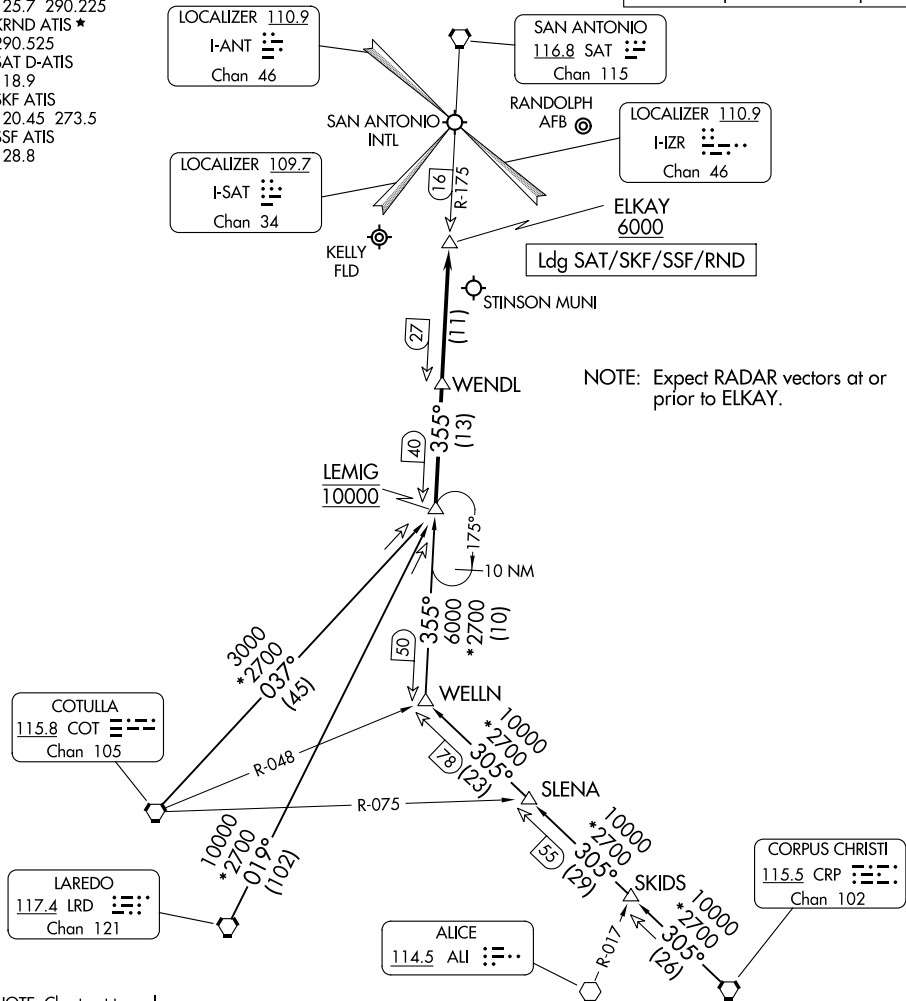


# LEMIG TWO ARRIVAL

SAN ANTONIO, TEXAS

SAN ANTONIO APP CON  
 125.7 290.225  
 KRND ATIS \*  
 290.525  
 SAT D-ATIS  
 118.9  
 SKF ATIS  
 120.45 273.5  
 SSF ATIS  
 128.8

RADAR required. DME required.



NOTE: Expect RADAR vectors at or prior to ELKAY.

NOTE: Chart not to scale.

### ARRIVAL ROUTE DESCRIPTION

CORPUS CHRISTI TRANSITION (CRP.LEMIG2): From over CRP VORTAC on CRP R-305 to WELLN, then on SAT R-175 to LEMIG. Thence . . . .

COTULLA TRANSITION (COT.LEMIG2): From over COT VORTAC on COT R-037 to LEMIG. Thence . . . .

LAREDO TRANSITION (LRD.LEMIG2): From over LRD VORTAC on LRD R-019 to LEMIG. Thence . . . .

LANDING ALL AIRPORTS: . . . . From LEMIG on SAT R-175 to cross ELKAY at or above 6000. Expect RADAR vectors to final approach course.

# LEMIG TWO ARRIVAL

SAN ANTONIO, TEXAS

SC-3, 16 APR 2026 to 14 MAY 2026

SC-3, 16 APR 2026 to 14 MAY 2026