

APP CRS	Rwy Ldg	<b>8505</b>
<b>217°</b>	TDZE	<b>770</b>
	Apt Elev	<b>809</b>

# RNAV (RNP) X RWY 22

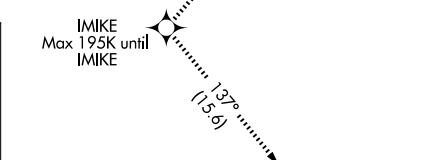
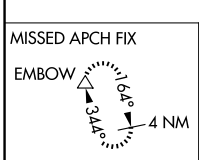
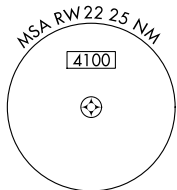
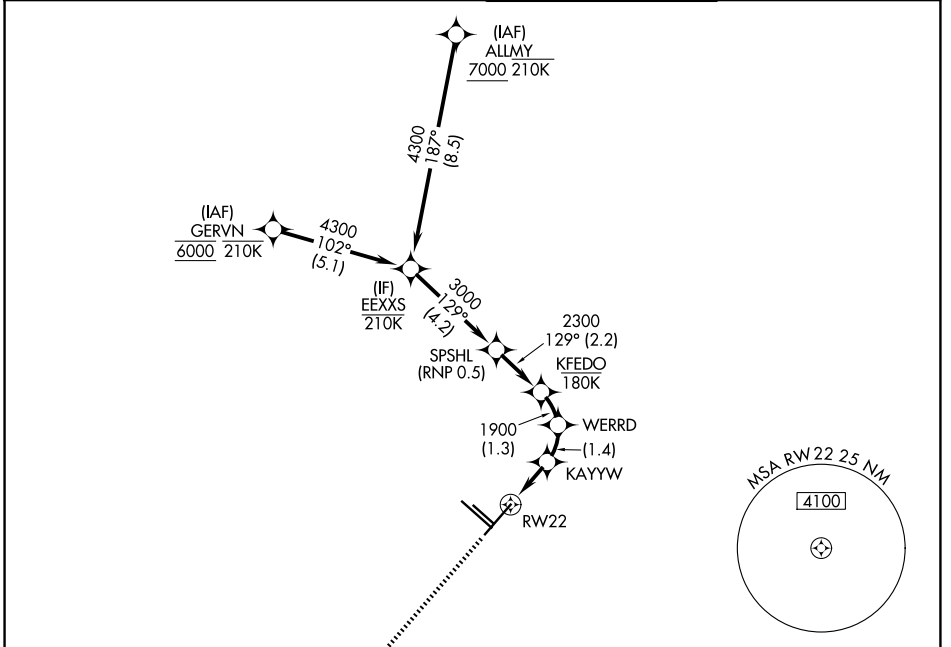
SAN ANTONIO INTL (SAT)

RNP AR APCH - GPS.

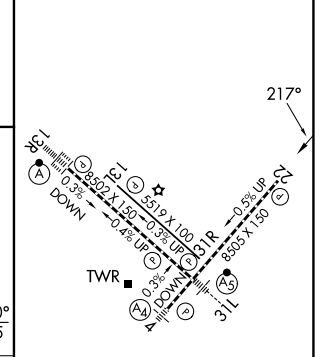
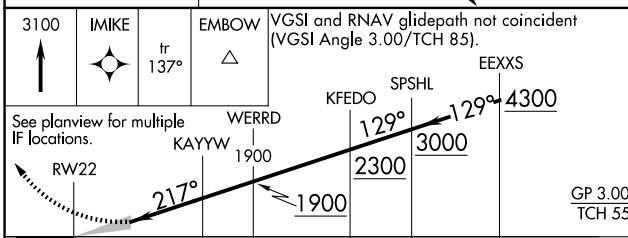
▼ For uncompensated Baro-VNAV systems, procedure NA below -5°C or above 54°C.

MISSED APPROACH: (Do not exceed 195K until IMIKE)  
Climb to 3100 direct IMIKE and on track 137° EMBOW and hold.

D-ATIS <b>118.9</b>	SAN ANTONIO APP CON <b>125.1 307.0</b>	SAN ANTONIO TOWER <b>119.8 257.8</b>	GND CON <b>121.9 348.6</b>
------------------------	---	---	-------------------------------



ELEV 809	<b>D</b>	TDZE 770
----------	----------	----------



CATEGORY	A	B	C	D
RNP 0.15 DA		1070-7/8	300 (300-7/8)	
RNP 0.30 DA		1222-13/8	452 (500-13/8)	

GP 3.00° TCH 55

TDZL/RCLS Rwy 13R  
REIL Rwy 13L, 22 and 31R  
HIRL Rwy 4-22 and 13R-31L  
MIRL Rwy 13L-31R

## AUTHORIZATION REQUIRED

SC-3, 16 APR 2026 to 14 MAY 2026

SC-3, 16 APR 2026 to 14 MAY 2026