

APP CRS	Rwy Ldg	8505
217°	TDZE	770
	Apt Elev	809

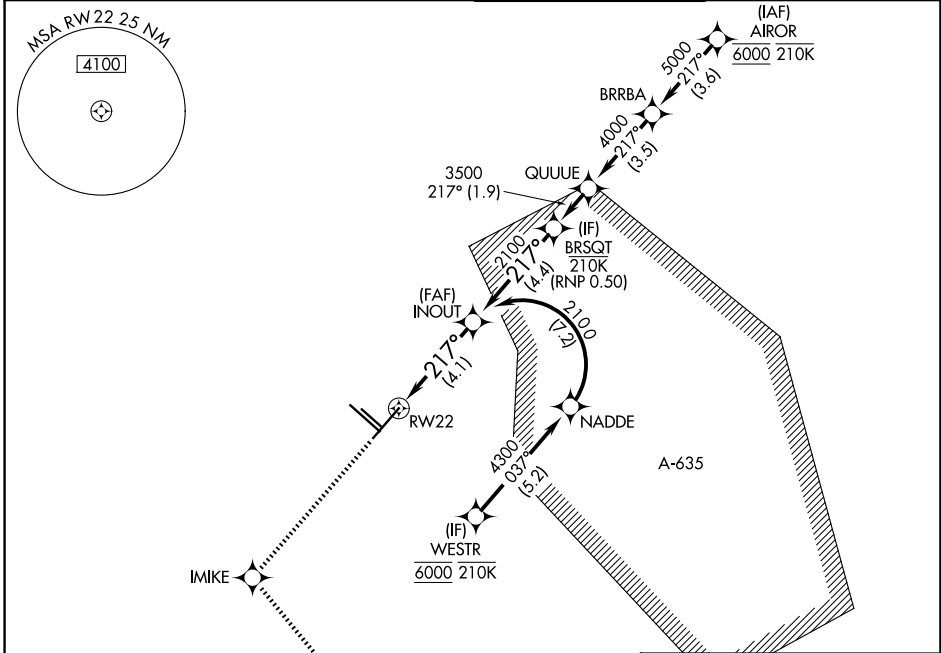
RNAV (RNP) Z RWY 22

SAN ANTONIO INTL (SAT)

RNP AR APCH - GPS. Authorization required.
 From BRSQT: min RNP 0.50. From NADDE: RF.
 For uncompensated Baro-VNAV systems, procedure NA below -6°C or above 54°C.

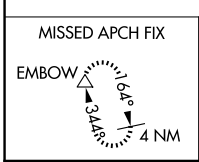
MISSED APPROACH: Climb to 3100
 direct IMIKE and on track 137° to
 EMBOW and hold.

D-ATIS 118.9	SAN ANTONIO APP CON 125.1 307.0	SAN ANTONIO TOWER 119.8 257.8	GND CON 121.9 348.6
------------------------	-------------------------------------------	-----------------------------------------	-------------------------------



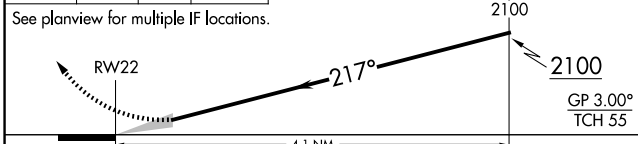
SC-3, 16 APR 2026 to 14 MAY 2026

SC-3, 16 APR 2026 to 14 MAY 2026

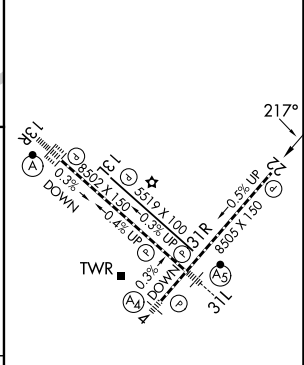


3100	IMIKE	EMBOW
↑	✧	△
	tr	137°

VGSI and RNAV glidepath not coincident
 (VGSI Angle 3.00/TCH 85).



ELEV	809	D	TDZE	770
------	-----	----------	------	-----



CATEGORY	A	B	C	D
RNP 0.15 DA		1070-7/8	300 (300-7/8)	
RNP 0.30 DA		1220-13/8	450 (500-13/8)	

TDZL/RCLS Rwy 13R
 REIL Rwys 13L, 22 and 31R
 HIRL Rwys 4-22 and 13R-31L
 MIRL Rwy 13L-31R

AUTHORIZATION REQUIRED