

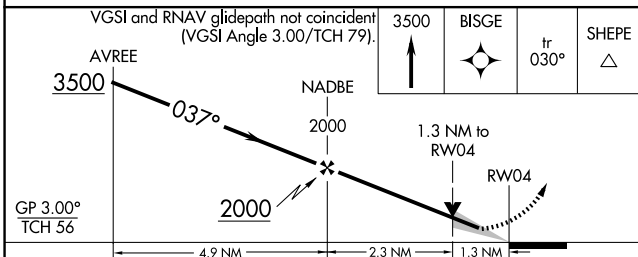
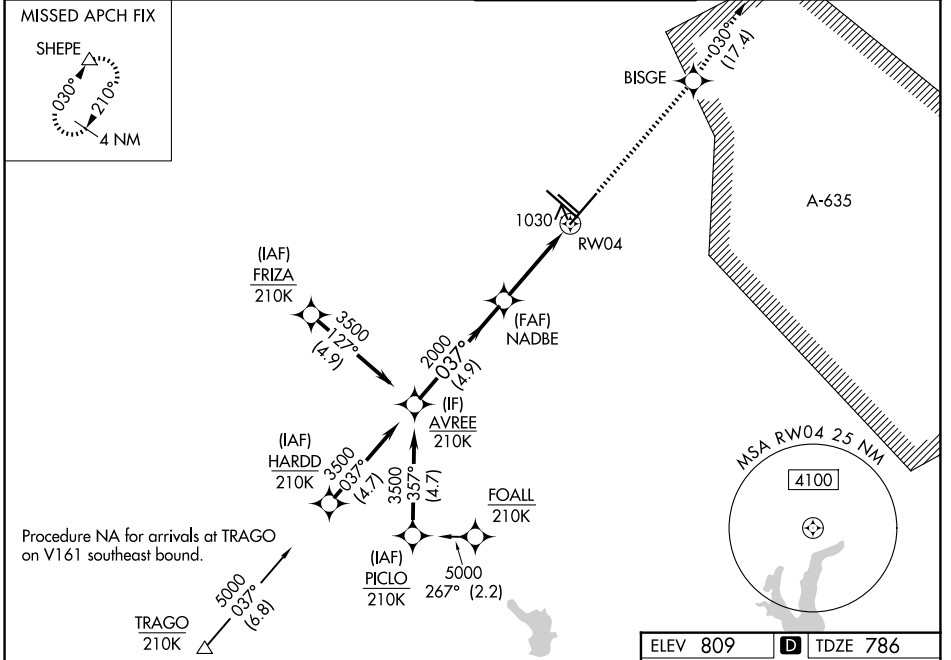
WAAS CH 77613 W04A	APP CRS 037°	Rwy Ldg TDZE Apt Elev	8505 786 809
--	------------------------	-----------------------------	---

RNAV (GPS) Y RWY 4

SAN ANTONIO INTL (SAT)

RNP APCH - GPS.	MALS 	MISSED APPROACH: Climb to 3500 direct BISGE and track 030° to SHEPE and hold.
<p>▼ Circling NA northwest of Rws 4 and 13R. Inop table does not apply to LPV. For uncompensated Baro-VNAV systems, LNAV/VNAV NA below -5°C or above 54°C.</p> <p>▲ For inop ALS, increase LNAV/VNAV all Cts visibility to RVR 6000. Increase LNAV Cts A/B visibility to RVR 5500 and LNAV Cts C/D visibility to 1% SM.</p>		

D-ATIS 118.9	SAN ANTONIO APP CON 125.1 307.0	SAN ANTONIO TOWER 119.8 257.8	GND CON 121.9 348.6
------------------------	---	---	-------------------------------



ELEV 809	D TDZE 786
<p>TWRL/RCLS Rwy 13R REIL Rws 13L, 22 and 31R HIRL Rws 4-22 and 13R-31L MIRL Rwy 13L-31R</p>	

CATEGORY	A	B	C	D
LPV DA		986/40	200 (200-¾)	
LNAV/VNAV DA		1201/50	415 (400-1)	
LNAV MDA	1280/40	494 (500-¾)	1280/60	494 (500-1¼)
CIRCLING	1280-1 471 (500-1)	1340-1 531 (600-1)	1420-1¾ 611 (700-1¾)	1520-2¼ 711 (800-2¼)

SC-3, 16 APR 2026 to 14 MAY 2026

SC-3, 16 APR 2026 to 14 MAY 2026