

(YODUH2.YODUH) 25219

AL-369 (FAA)

SAN ANTONIO INTL (SAT)

YODUH TWO DEPARTURE (RNAV)

SAN ANTONIO, TEXAS

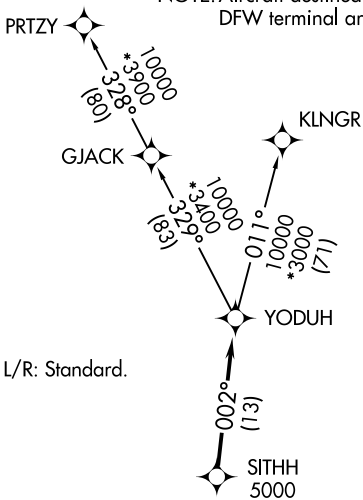
SAN ANTONIO DEP CON
 125.1 307.0 (31L/R)
 125.7 290.225 (22)
 127.1 269.1 (4, 13L/R)
 D-ATIS
 118.9
 CLNC DEL
 126.7
 CPDLC
 GND CON
 121.9 348.6
 SAN ANTONIO TOWER
 119.8 257.8

RNAV 1 - DME/DME IRU or GPS.

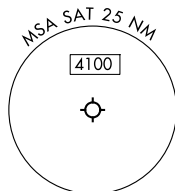
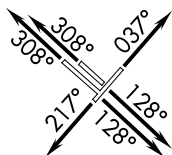
RADAR required for non-GPS equipped aircraft. RADAR required.

**TOP ALTITUDE:
5000**

NOTE: Aircraft destined for airports north/northeast of DFW terminal area must file the KLNGR Transition.



TAKEOFF MINIMUMS
Rwys 4, 13L/R, 22, 31L/R: Standard.



NOTE: Chart not to scale.

DEPARTURE ROUTE DESCRIPTION

TAKEOFF RUNWAY 4: Climb on heading 037° or as assigned by ATC, for vectors to SITHH, thence. . .

TAKEOFF RUNWAYS 13L/R: Climb on heading 128° or as assigned by ATC, for vectors to SITHH, thence. . .

TAKEOFF RUNWAY 22: Climb on heading 217° or as assigned by ATC, for vectors to SITHH, thence. . .

TAKEOFF RUNWAYS 31L/R: Climb on heading 308° or as assigned by ATC, for vectors to SITHH, thence. . .

. . .on track 002° to YODUH, then on transition. Maintain 5000. Expect filed altitude 10 minutes after departure.

KLNGR TRANSITION (YODUH2.KLNGR)
PRTZY TRANSITION (YODUH2.PRTZY)

YODUH TWO DEPARTURE (RNAV)
(YODUH2.YODUH) 07AUG25

SAN ANTONIO, TEXAS
SAN ANTONIO INTL (SAT)

SC-3, 16 APR 2026 to 14 MAY 2026

SC-3, 16 APR 2026 to 14 MAY 2026