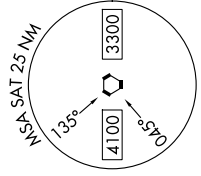
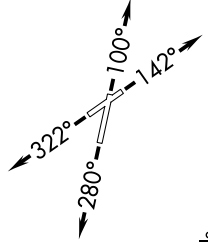
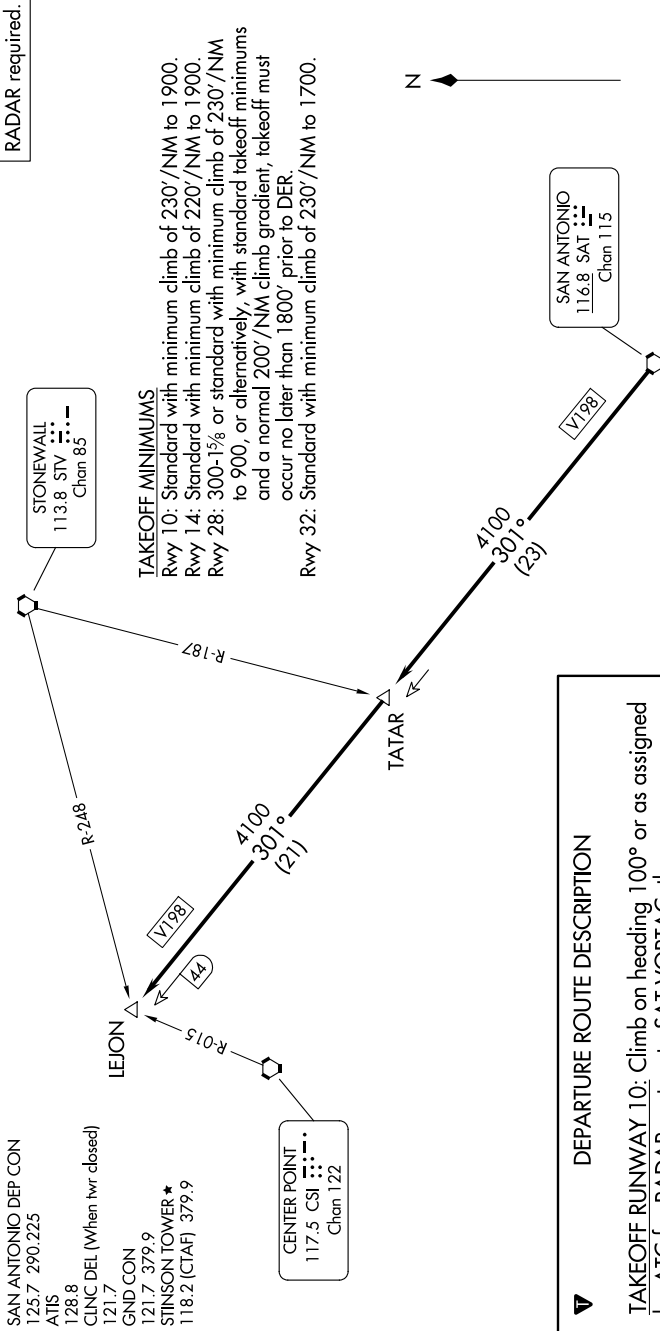


LEJON FIVE DEPARTURE

SC-3, 16 APR 2026 to 14 MAY 2026



RADAR required.

DEPARTURE ROUTE DESCRIPTION

TAKEOFF RUNWAY 10: Climb on heading 100° or as assigned by ATC for RADAR vectors to SAT VORTAC, thence. . .

TAKEOFF RUNWAY 14: Climb on heading 142° or as assigned by ATC for RADAR vectors to SAT VORTAC, thence. . .

TAKEOFF RUNWAY 28: Climb on heading 280° or as assigned by ATC for RADAR vectors to SAT VORTAC, thence. . .

TAKEOFF RUNWAY 32: Climb on heading 322° or as assigned by ATC for RADAR vectors to SAT VORTAC, thence. . .

. . . on depicted route to LEJON. Expect filed altitude 10 minutes after departure.

NOTE: Chart not to scale.

SC-3, 16 APR 2026 to 14 MAY 2026