

VOR SSF 108.4	APP CRS 343°	Rwy Ldg 3530 TDZE 571 Apt Elev 578
-------------------------	------------------------	---

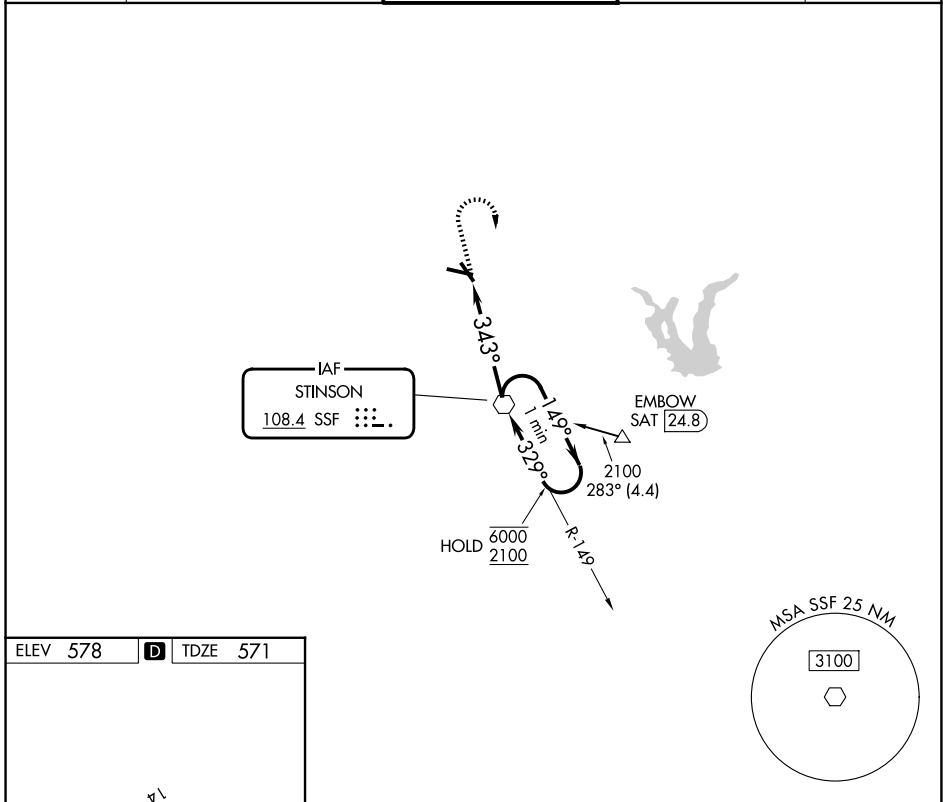
VOR RWY 32

STINSON MUNI (SSF)

NA Rwy 32 helicopter visibility reduction below 3/4 SM NA.
Straight-in Rwy 32 NA at night, Circling Rwy 10, NA at night.

MISSED APPROACH: Climb to 1400 then climbing right turn to 2500 direct SSF VOR and hold.

ATIS 128.8	SAN ANTONIO APP CON 125.7 290.225	STINSON TOWER ★ 118.2 (CTAF) 379.9	GND CON 121.7 379.9	UNICOM 122.95
----------------------	---	--	-------------------------------	-------------------------



ELEV 578	D	TDZE 571
----------	----------	----------

REIL Rwy 10, 14, 28, and 32
MIRL Rwy 10-28 and 14-32
FAF to MAP 4.6 NM

Knots	60	90	120	150	180
Min:Sec	4:36	3:04	2:18	1:50	1:32

1400	2500	SSF	One Minute Holding Pattern	
		SSF VOR	149° → 6000	← 329° 2100
		4.6 NM		
CATEGORY	A	B	C	D
S-32	1020-1 449 (500-1)		1020-1 3/8 449 (500-1 3/8)	NA
CIRCLING	1040-1 462 (500-1)	1120-1 542 (600-1)	1260-2 682 (700-2)	NA

SC-3, 16 APR 2026 to 14 MAY 2026

SC-3, 16 APR 2026 to 14 MAY 2026