

# YODUH TWO DEPARTURE (RNAV)

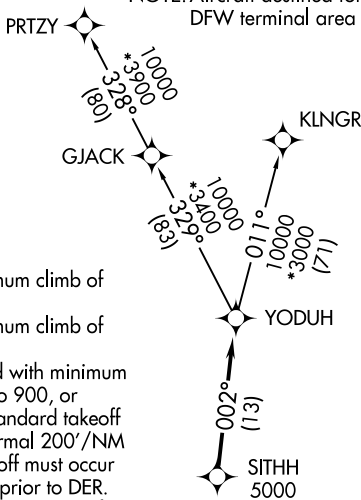
SAN ANTONIO DEP CON  
125.7 290.225  
ATIS  
128.8  
CLNC DEL (When twr closed)  
121.7  
GND CON  
121.7 379.9  
STINSON TOWER \*  
118.2 379.9

RNAV 1 - DME/DME IRU or GPS.

RADAR required for non-GPS equipped aircraft.  
RADAR required.

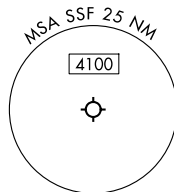
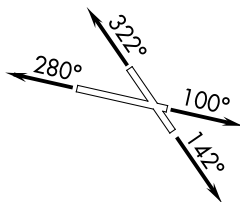
**TOP ALTITUDE:  
ASSIGNED BY ATC**

NOTE: Aircraft destined for airports north/northeast of DFW terminal area must file the KLNGR Transition.



### TAKEOFF MINIMUMS

- Rwy 10: Standard with minimum climb of 230'/NM to 1900.
- Rwy 14: Standard with minimum climb of 220'/NM to 1900.
- Rwy 28: 300-1 $\frac{5}{8}$  or standard with minimum climb of 230'/NM to 900, or alternatively, with standard takeoff minimums and a normal 200'/NM climb gradient, takeoff must occur no later than 1800' prior to DER.
- Rwy 32: Standard with minimum climb of 230'/NM to 1700.



NOTE: Chart not to scale.

### DEPARTURE ROUTE DESCRIPTION

- TAKEOFF RUNWAY 10:** Climb on heading 100° or as assigned by ATC, for vectors to SITHH, thence. . .
- TAKEOFF RUNWAY 14:** Climb on heading 142° or as assigned by ATC, for vectors to SITHH, thence. . .
- TAKEOFF RUNWAY 28:** Climb on heading 280° or as assigned by ATC, for vectors to SITHH, thence. . .
- TAKEOFF RUNWAY 32:** Climb on heading 322° or as assigned by ATC, for vectors to SITHH, thence. . .

. . .on track 002° to YODUH, then on transition. Maintain ATC assigned altitude. Expect filed altitude 10 minutes after departure.

KLNGR TRANSITION (YODUH2.KLNGR)  
PRTZY TRANSITION (YODUH2.PRTZY)