

CLSSY THREE DEPARTURE (RNAV)

AL-373 (FAA)

SAN DIEGO INTL (SAN)
SAN DIEGO, CALIFORNIA

SW-3, 16 APR 2026 to 14 MAY 2026

DEPARTURE ROUTE DESCRIPTION

TAKEOFF RUNWAY 27: Climb on heading 275° to 517, then climbing right turn direct RRONN, then on depicted route to cross CLSSY at or above 4000 and at or below 230K, then on transition. Jets maintain FL230, turbo-props maintain 15000, expect filed altitude 10 minutes after departure.

CENZA TRANSITION (CLSSY3.CENZA)

GILA BEND TRANSITION (CLSSY3.GBN)

HOGGZ TRANSITION (CLSSY3.HOGGZ)

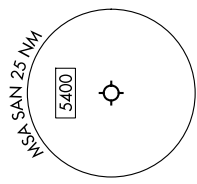
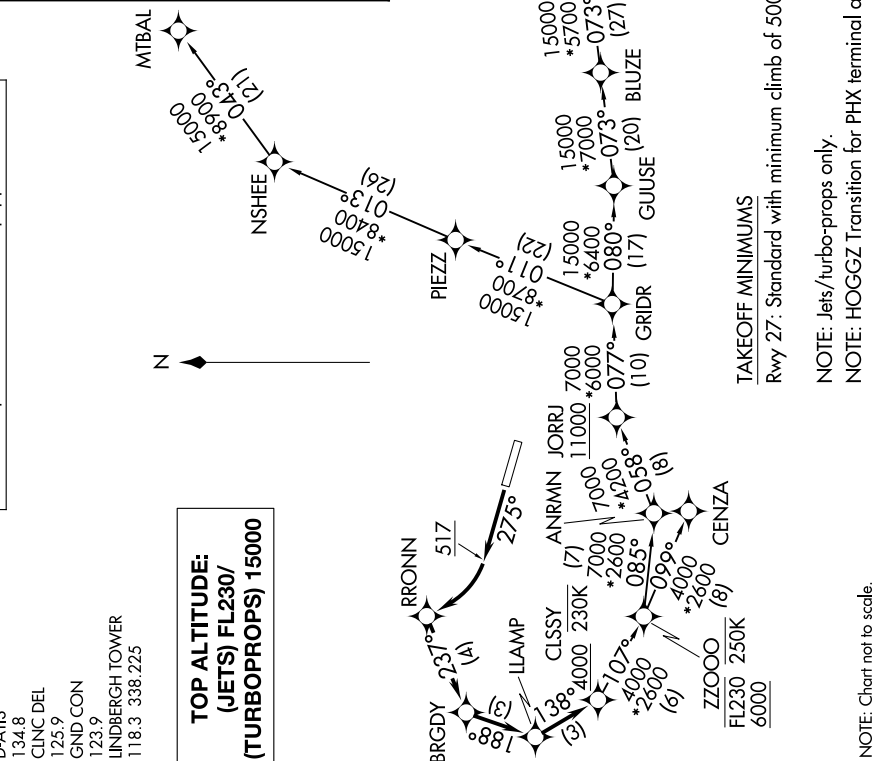
MTBAL TRANSITION (CLSSY3.MTBAL)

TGOLD TRANSITION (CLSSY3.TGOLD)

RNAV 1 - DME/DME/IRU or GPS.
RADAR required for non-GPS equipped aircraft.

SOCAL DEP CON
119.6 363.1
D-AIS
134.8
CLNC DEL
125.9
GND CON
123.9
LINDBERGH TOWER
118.3 338.225

**TOP ALTITUDE:
(JETS) FL230/
(TURBOPROPS) 15000**



TAKEOFF MINIMUMS
Rwy 27: Standard with minimum climb of 500'/NM to 517.

NOTE: Jets/turbo-props only.
NOTE: HOGGZ Transition for PHX terminal area arrivals only.

CLSSY THREE DEPARTURE (RNAV)

(CLSSY3.CLSSY) 22JAN26

SAN DIEGO, CALIFORNIA
SAN DIEGO INTL (SAN)

SW-3, 16 APR 2026 to 14 MAY 2026

NOTE: Chart not to scale.