

(CWARD2.CWARD) 18004

CWARD TWO DEPARTURE (RNAV)

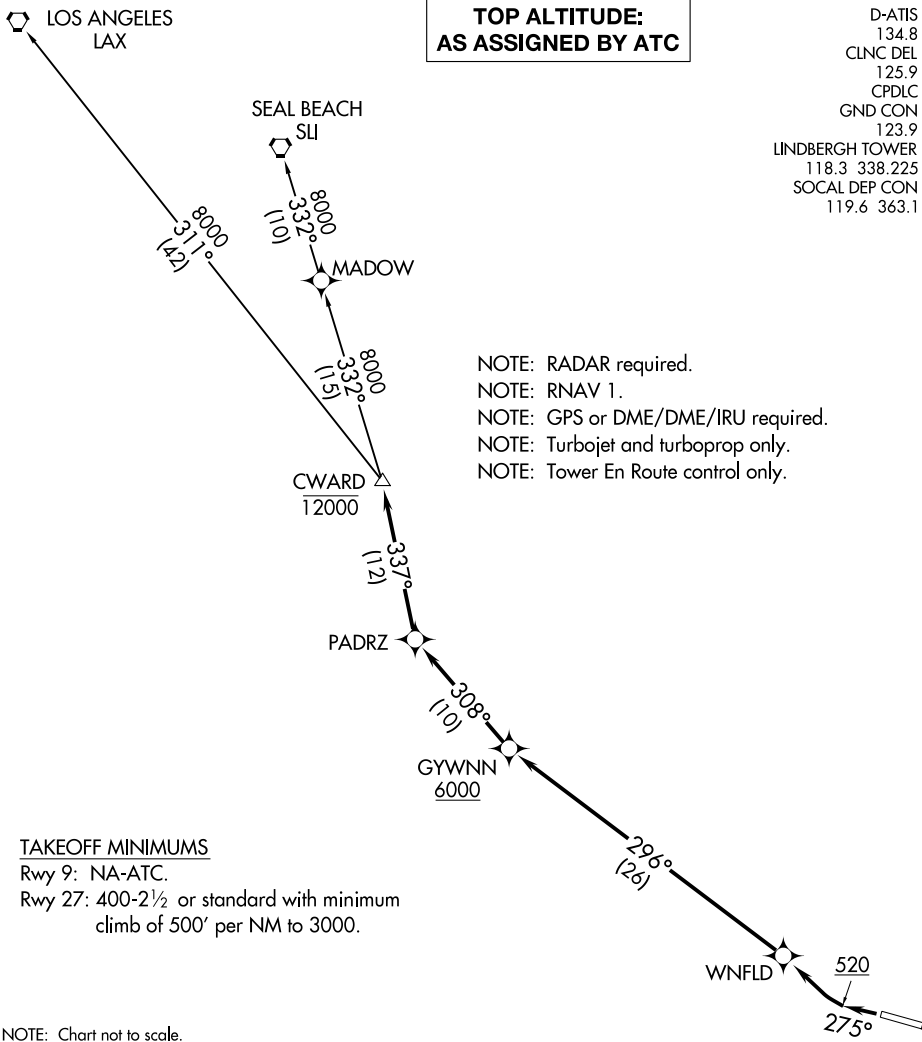
AL-373 (FAA)

SAN DIEGO INTL (SAN)
SAN DIEGO, CALIFORNIA

**TOP ALTITUDE:
AS ASSIGNED BY ATC**

D-ATIS 134.8
 CLNC DEL 125.9
 CPDLC
 GND CON 123.9
 LINDBERGH TOWER 118.3 338.225
 SOCAL DEP CON 119.6 363.1

NOTE: RADAR required.
 NOTE: RNAV 1.
 NOTE: GPS or DME/DME/IRU required.
 NOTE: Turbojet and turboprop only.
 NOTE: Tower En Route control only.



TAKEOFF MINIMUMS

Rwy 9: NA-ATC.

Rwy 27: 400-2½ or standard with minimum climb of 500' per NM to 3000.

NOTE: Chart not to scale.



DEPARTURE ROUTE DESCRIPTION

TAKEOFF RUNWAY 27: Climb heading 275° to 520, then right turn direct WNFLD, then on track 296° to cross GYWNN at or above 6000, then on track 308° to PADRZ, then on track 337° to cross CWARD at or below 12000, thence. . . .

. . . .on transition. Maintain ATC assigned altitude. Expect filed altitude 10 minutes after departure.

LOS ANGELES TRANSITION (CWARD2.LAX)

SEAL BEACH TRANSITION (CWARD2.SLI)

CWARD TWO DEPARTURE (RNAV)

(CWARD2.CWARD) 07DEC17

SAN DIEGO, CALIFORNIA
SAN DIEGO INTL (SAN)

SW-3, 16 APR 2026 to 14 MAY 2026

SW-3, 16 APR 2026 to 14 MAY 2026