

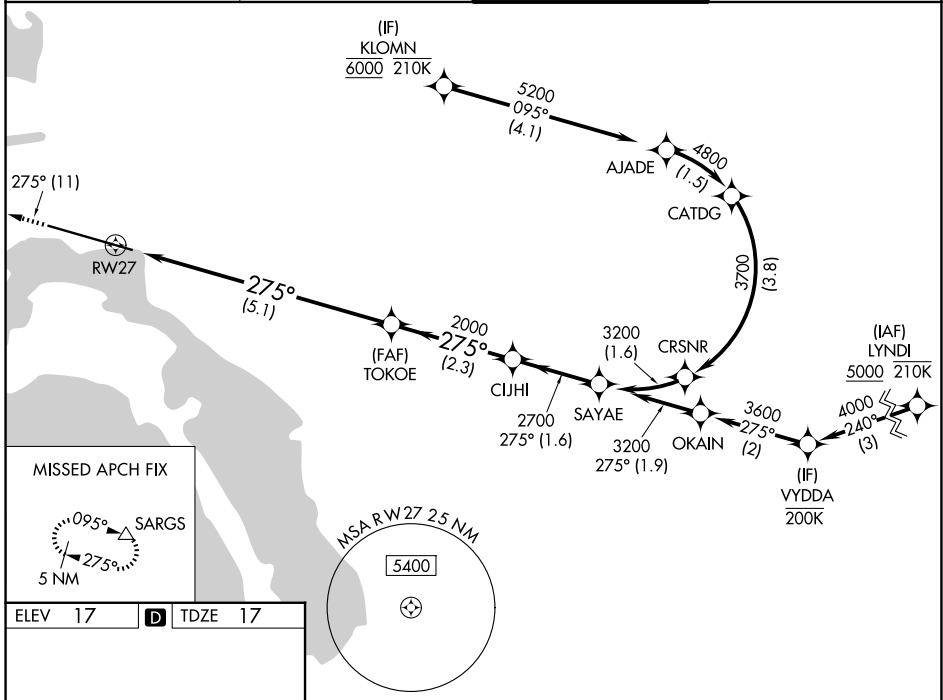
APP CRS <b>275°</b>	Rwy Ldg TDZE Apt Elev	<b>7591</b> <b>17</b> <b>17</b>
------------------------	-----------------------------	---------------------------------------

# RNAV (RNP) Z RWY 27

SAN DIEGO INTL (SAN)

RNP AR APCH - GPS. Authorization required. From KLOMN: RF.	MALS 	MISSED APPROACH: Climb to 2500 on track 275° to SARGs and hold.
For uncompensated Baro-VNAV systems, procedure NA below 5°C or above 44°C. For inop ALS, increase RNP 0.30 all Cats visibility to 2 1/2 SM. Straight-in Rwy 27 at night, operational VGSI required, remain on or above VGSI glidepath until threshold.		

D-ATIS <b>134.8</b>	SOCAL APP CON <b>119.6 363.1 (W)</b> <b>124.35 279.625 (E)</b>	LINDBERGH TOWER <b>118.3 338.225</b>	GND CON <b>123.9</b>
------------------------	--	---	-------------------------

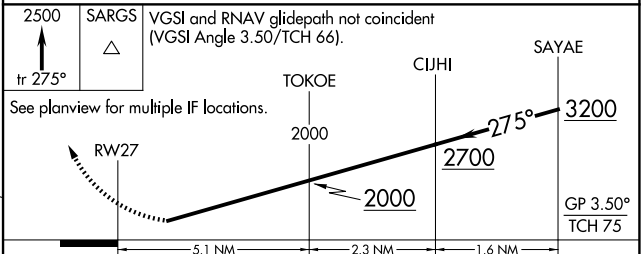


ELEV 17 **D** TDZE 17

MISSED APCH FIX

TWR 9401 X 200

TDZL/RCLS Rws 9 and 27  
HIRL Rwy 9-27



CATEGORY	A	B	C	D
RNP 0.11 DA		624-1 1/2	607 (700-1 1/2)	
RNP 0.30 DA		789-2	772 (800-2)	

**AUTHORIZATION REQUIRED**

SW-3, 16 APR 2026 to 14 MAY 2026

SW-3, 16 APR 2026 to 14 MAY 2026