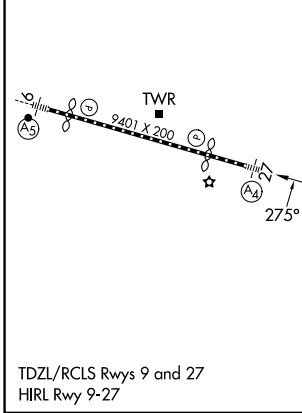
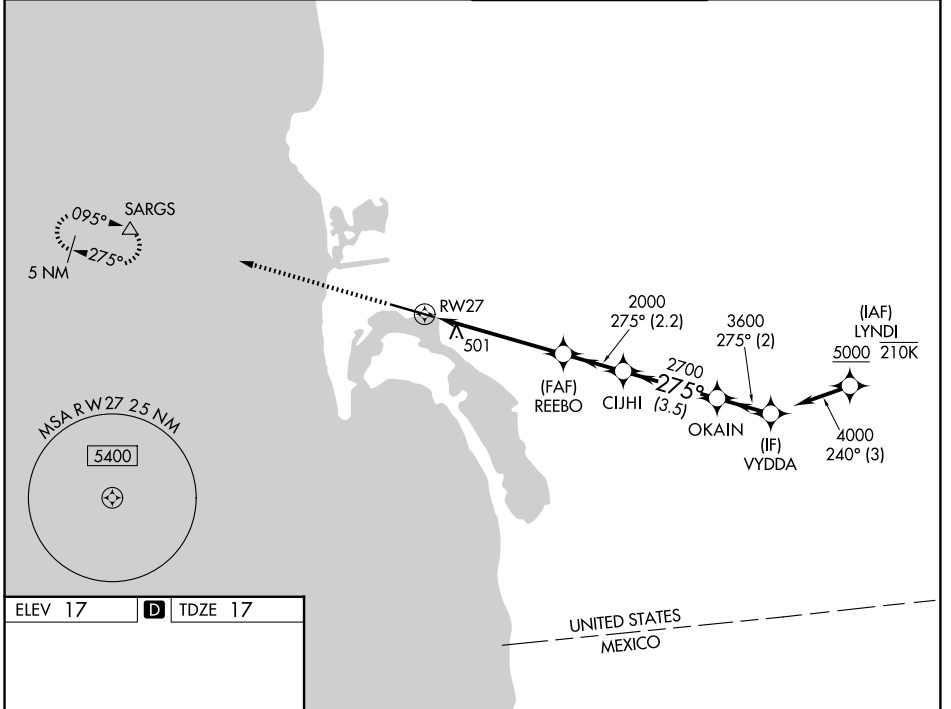


WAAS CH 82527 W27A	APP CRS 275°	Rwy Ldg TDZE Apt Elev	7591 17 17
--	------------------------	-----------------------------	---------------------------------------

RNAV (GPS) Y RWY 27

SAN DIEGO INTL (SAN)

RNP APCH.		MALS	MISSED APPROACH: Climb to 2500 direct SARGs and hold.
<p>▼ Rwy 27 helicopter visibility reduction below RVR 5000 NA. Straight-in Rwy 27 at night, operational VGSI required, remain on or above VGSI glidepath until threshold. Circling NA north of Rwy 9-27. For inop ALS, increase LNAV Cats C/D visibility to 2 SM. Inop table does not apply to LP Cats A/B and LNAV Cat A.</p>			
D-ATIS 134.8	SOCAL APP CON 119.6 363.1 (W) 124.35 279.625 (E)	LINDBERGH TOWER 118.3 338.225	GND CON 123.9



2500	SARGs	VYDDA		
↑	△			
	REEBO	OKAIN	VYDDA	
	2000	2700	3600	4000
	5.2 NM	2.2 NM	3.5 NM	2 NM
CATEGORY	A	B	C	D
LP MDA	680/50	663 (700-1)	680-1¾	663 (700-1¾)
LNAV MDA	760/50 743 (800-1)	760/55 743 (800-1)	760-1⅞	743 (800-1⅞)
CIRCLING	820-1 803 (900-1)	820-1¼ 803 (900-1¼)	820-2½ 803 (900-2½)	940-3 923 (1000-3)

SW-3, 16 APR 2026 to 14 MAY 2026

SW-3, 16 APR 2026 to 14 MAY 2026