

(ZZOOO4.ZZOOO) 24305

ZZOOO FOUR DEPARTURE (RNAV)

AL-373 (FAA)

SAN DIEGO INTL (SAN)
SAN DIEGO, CALIFORNIA

SW-3, 16 APR 2026 to 14 MAY 2026

DEPARTURE ROUTE DESCRIPTION

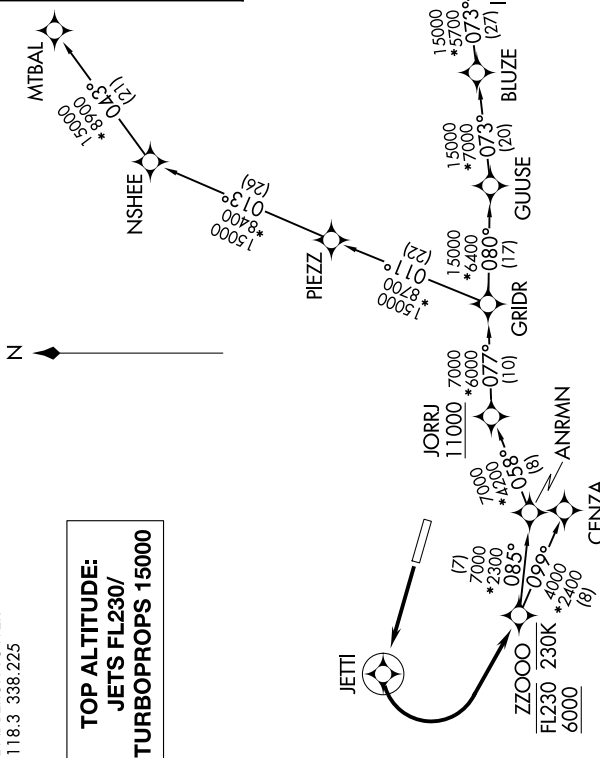
TAKEOFF RUNWAY 27: Climb direct JETTI, then left turn direct to cross ZZOOO between 6000 and FL230 and at or below 230K, then on transition. Jets maintain FL230, turbo-props maintain 15000, expect filed altitude 10 minutes after departure.

CENZA TRANSITION (ZZOOO4.CENZA)
GILA BEND TRANSITION (ZZOOO4.GBN)
HOGGZ TRANSITION (ZZOOO4.HOGGZ)
MTBAL TRANSITION (ZZOOO4.MTBAL)
TGOLD TRANSITION (ZZOOO4.TGOLD)

RNAV 1 - DME/DME/IRU or GPS.
 RADAR required for non-GPS equipped aircraft.
 For non-GPS equipped aircraft using TGOLD or GBN transitions, BLH DME must be operational.

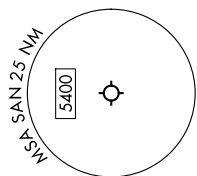
SOCAL DEP CON
125.15 317.55
D-ATIS
134.8
CLINC DEL
125.9
GND CON
123.9
LINDBERGH TOWER
118.3 338.225

**TOP ALTITUDE:
JETS FL230/
TURBOPROPS 15000**



TAKEOFF MINIMUMS
 Rwy 27: 400-2½ or standard with minimum climb of 370'/NM to 300.

NOTE: Jets/turbo-props only.
 NOTE: HOGGZ Transition for PHX terminal area arrivals only.



ZZOOO FOUR DEPARTURE (RNAV)

(ZZOOO4.ZZOOO) 31OCT24

SAN DIEGO, CALIFORNIA
SAN DIEGO INTL (SAN)

NOTE: Chart not to scale.

SW-3, 16 APR 2026 to 14 MAY 2026