

ATIS ★
 317.8
 CLNC DEL
 128.4 288.25
 GND CON
 118.0 360.675
 NORTH ISLAND TOWER ★
 135.1 336.4
 SOCAL DEP CON
 125.15 317.55

RADAR and DME required

Rwy	Knots	60	120	180	240	300	360
11 (A)	V/V(fpm)	275	550	825	1100	1375	1650
11 (B)	V/V(fpm)	290	580	870	1160	1450	1740
29 (C)	V/V(fpm)	420	840	1260	1680	2100	2520
29 (D)	V/V(fpm)	470	940	1410	1880	2350	2820

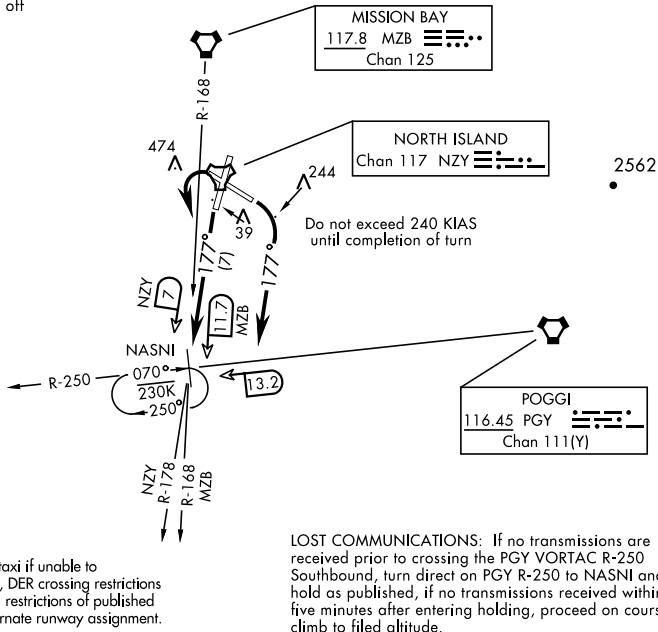
Minimum Climb Rate

- (A) Military climb to 700 or 600-2 1/4 authorized in lieu of climb rate.
- (B) Civil climb to 700 or 600-2 1/4 authorized in lieu of climb rate.
- (C) Military climb to 700 or 600-2 1/2 authorized in lieu of climb rate.
- (D) Civil climb to 700 or 600-2 1/2 authorized in lieu of climb rate.

CAUTION: Rwy 29 Cross DER at or above 35'

CAT E aircraft not authorized off
 Rwy 11 and 29

Rwy 29 CIVIL departure
 dual DME required



SW-3, 16 APR 2026 to 14 MAY 2026

SW-3, 16 APR 2026 to 14 MAY 2026

DEPARTURE ROUTE DESCRIPTION

TAKEOFF RWY 11: Turn right as soon as practicable climbing to 2000 via heading 177°, remain within NZY TACAN 1.4 DME to not overfly the City of Coronado, thence...

TAKEOFF RWY 18: Climbing left turn to 2000 intercept the NZY TACAN R-178 (MZB VORTAC R-168) to NASNI, thence...

TAKEOFF RWY 29 (CIVIL): Turn left as soon as practicable climbing to 2000, remain within NZY TACAN 1 DME to not overfly Point Loma, intercept the MZB VORTAC R-168 to NASNI, thence...

TAKEOFF RWY 29 (MILITARY): Turn left as soon as practicable climbing to 2000, remain within NZY TACAN 1 DME to not overfly Point Loma, intercept the NZY R-178 to NASNI, thence...

...Expect RADAR vectors to join assigned route.