

SAN DIEGO, CALIFORNIA

# RNAV (RNP) RWY 29

|          |            |      |
|----------|------------|------|
| APCH CRS | Rwy Idg    | 7501 |
| 291°     | TDZE       | 26   |
|          | Arprt Elev | 26   |

- (USN)

NORTH ISLAND NAS (HALSEY FLD) (KNZY)

RNP AR APCH-GPS, RF.



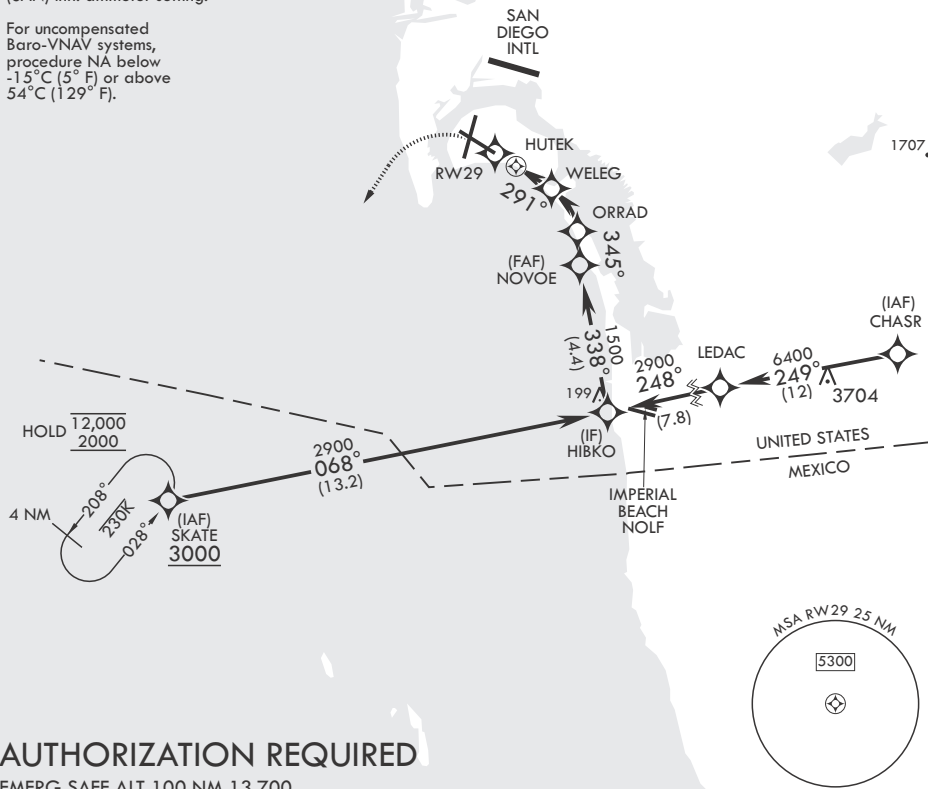
MISSED APPROACH: Climb to 700, then climbing left turn to 2000 direct SKATE and hold.

▼ \* When ALS inop, increase vis to 7/8 mile.

|       |                       |             |               |              |         |
|-------|-----------------------|-------------|---------------|--------------|---------|
| ATIS★ | SOCAL APP CON/DEP CON | TOWER★      | GND CON       | CLNC DEL     | ASR/PAR |
| 317.8 | 125.15 317.55         | 135.1 336.4 | 118.0 360.675 | 128.4 288.25 |         |

When local altimeter setting not received, use San Diego (SAN) Intl. altimeter setting.

For uncompensated Baro-VNAV systems, procedure NA below -15°C (5° F) or above 54°C (129° F).

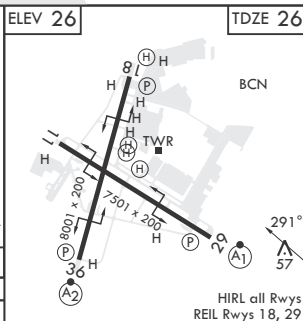
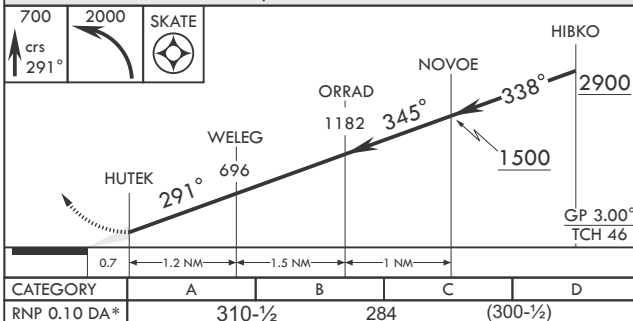


SW-3, 16 APR 2026 to 14 MAY 2026

SW-3, 16 APR 2026 to 14 MAY 2026

## AUTHORIZATION REQUIRED

EMERG SAFE ALT 100 NM 13,700



|              |         |     |           |   |
|--------------|---------|-----|-----------|---|
| CATEGORY     | A       | B   | C         | D |
| RNP 0.10 DA* | 310-1/2 | 284 | (300-1/2) |   |

SAN DIEGO, CALIFORNIA

32°42'N - 117°13'W

NORTH ISLAND NAS (HALSEY FLD) (KNZY)

Orig 28NOV24

# RNAV (RNP) RWY 29