

SAN DIEGO, CALIFORNIA

RNAV (RNP) Z RWY 36

APCH CRS 004°	Rwy Idg TDZE Arprt Elev	8001 19 26
-------------------------	-------------------------------	---------------------------------------

(USN)

NORTH ISLAND NAS (HALSEY FLD) (KNZY)

RNP AR APCH-GPS, RF.



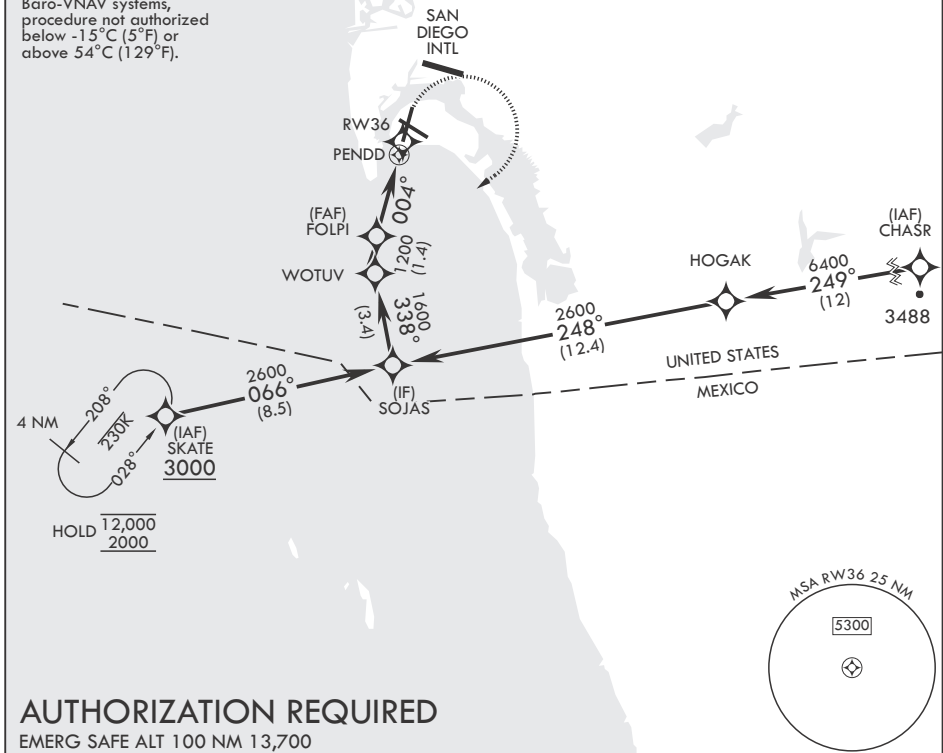
MISSED APPROACH: Climb to 700, then climbing right turn to 2000 direct SKATE and hold.

▼ * When ALS inop, increase vis to 7/8 mile.

ATIS★ 317.8	SOCAL APP CON/DEP CON 125.15 317.55	TOWER★ 135.1 336.4	GND CON 118.0 360.675	CLNC DEL 128.4 288.25	ASR/PAR
-----------------------	---	------------------------------	---------------------------------	---------------------------------	---------

When local altimeter setting not received, use San Diego (SAN) Intl. altimeter setting.

For uncompensated Baro-VNAV systems, procedure not authorized below -15°C (5°F) or above 54°C (129°F).



AUTHORIZATION REQUIRED

EMERG SAFE ALT 100 NM 13,700

SOJAS	WOTUV	FOLPI	PENDD	SKATE	ELEV 26	TDZE 19
2600	1600	1200	004°	700	2000	
GP 3.00°						
TCH 46						
CATEGORY	A	B	C	D		
RNP 0.10 DA*	312-3/4	293	(300-3/4)			

SAN DIEGO, CALIFORNIA

32°42'N - 117°13'W

NORTH ISLAND NAS (HALSEY FLD) (KNZY)

Orig 28NOV24

RNAV (RNP) Z RWY 36

SW-3, 16 APR 2026 to 14 MAY 2026

SW-3, 16 APR 2026 to 14 MAY 2026