

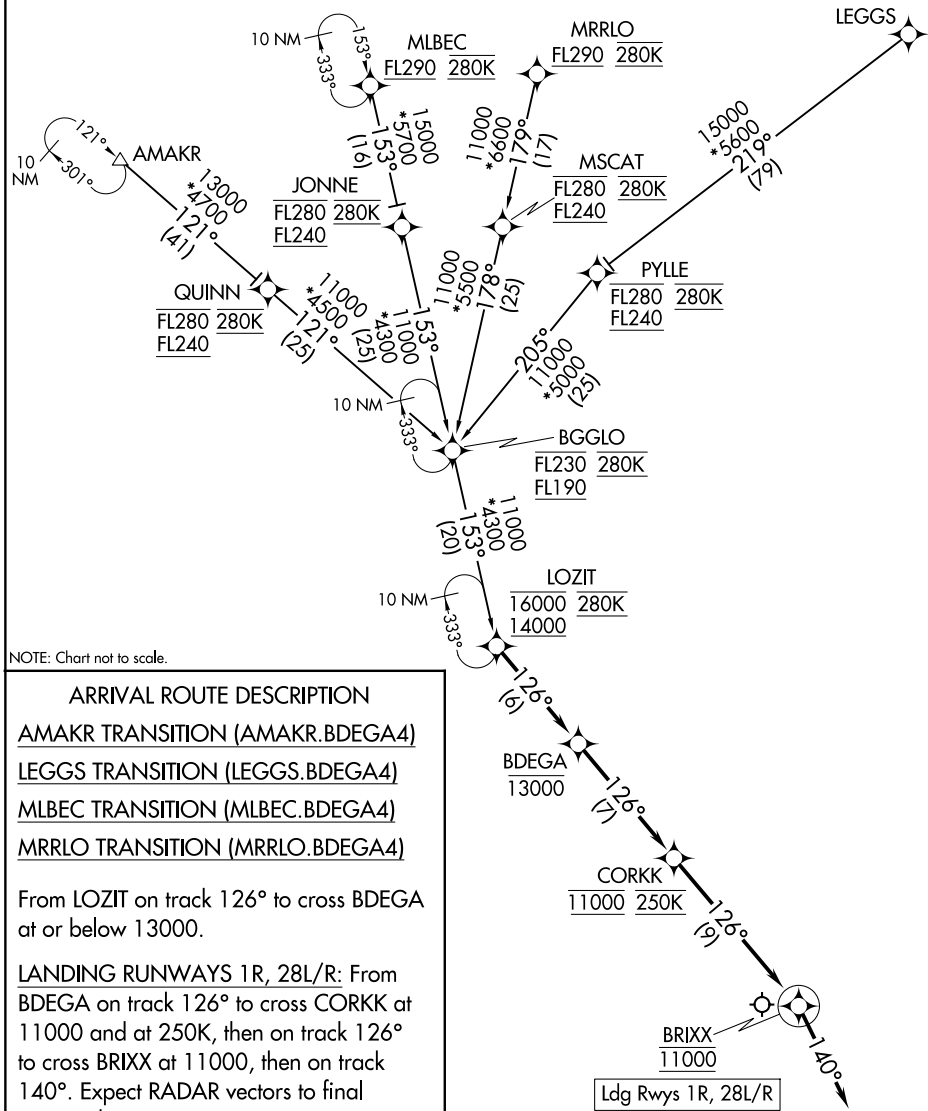
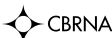
BDEGA FOUR ARRIVAL (RNAV)

AL-375 (FAA)

SAN FRANCISCO INTL (SFO)
SAN FRANCISCO, CALIFORNIA

OAKLAND CENTER
125.85 323.0
NORCAL APP CON
133.95 317.6
D-ATIS
113.7 115.8 118.85
GND CON
121.8
SAN FRANCISCO TOWER
120.5 269.1

RNAV 1 - DME/DME/IRU or GPS.
RADAR required.



SW-2, 16 APR 2026 to 14 MAY 2026

SW-2, 16 APR 2026 to 14 MAY 2026

NOTE: Chart not to scale.

ARRIVAL ROUTE DESCRIPTION

AMAKR TRANSITION (AMAKR.BDEGA4)

LEGG'S TRANSITION (LEGG'S.BDEGA4)

MLBEC TRANSITION (MLBEC.BDEGA4)

MRRLO TRANSITION (MRRLO.BDEGA4)

From LOZIT on track 126° to cross BDEGA at or below 13000.

LANDING RUNWAYS 1R, 28L/R: From BDEGA on track 126° to cross CORKK at 11000 and at 250K, then on track 126° to cross BRIXX at 11000, then on track 140°. Expect RADAR vectors to final approach course.

Ldg Rwys 1R, 28L/R

BDEGA FOUR ARRIVAL (RNAV)